

Test report

Laboratory and Equipment

Test lab
Spectrometer Manufacturer and Model
Measurement date

n/a - serial: n/a sensor serial: n/a
n/a, n/a – n/a
10/7/2025

Measurement Conditions

Tested c-planes
Tested gamma angles
Input Power

17 – distance {C_PLANES_DIST}°
181 – {H_PLANES_DIST}°
101.5 W

Tested Light Source

Luminaire
Basic Luminous Shape
Item No.
Manufacturer

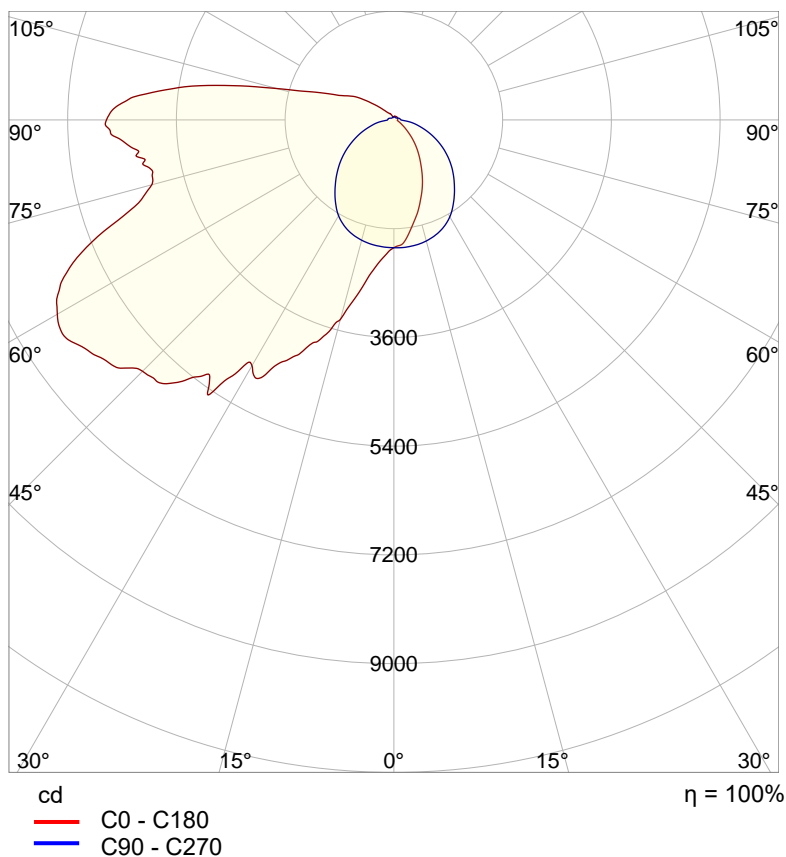
Alpine Wall Pack - ALP-WL-WP120-01
PANEL
Grizzly Lighting Systems

Main Light Measurement Results

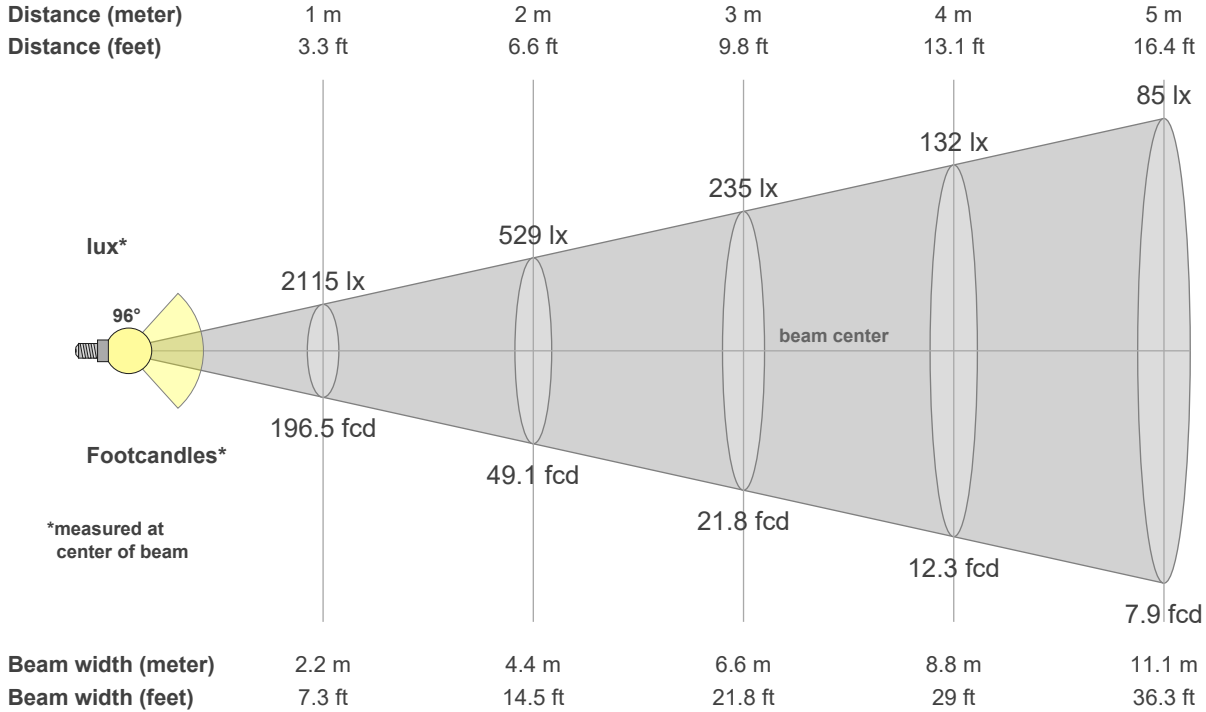
Output – Total Lumen (Up% / Down%)
Efficiency
Peak Intensity
Correlated Color Temperature, CCT
Color Rendering Index

14758 lm – 15.92% / 84.08%
145 lm/W
6528 cd
5000 K
CRI 70.0

Polar light distribution diagram

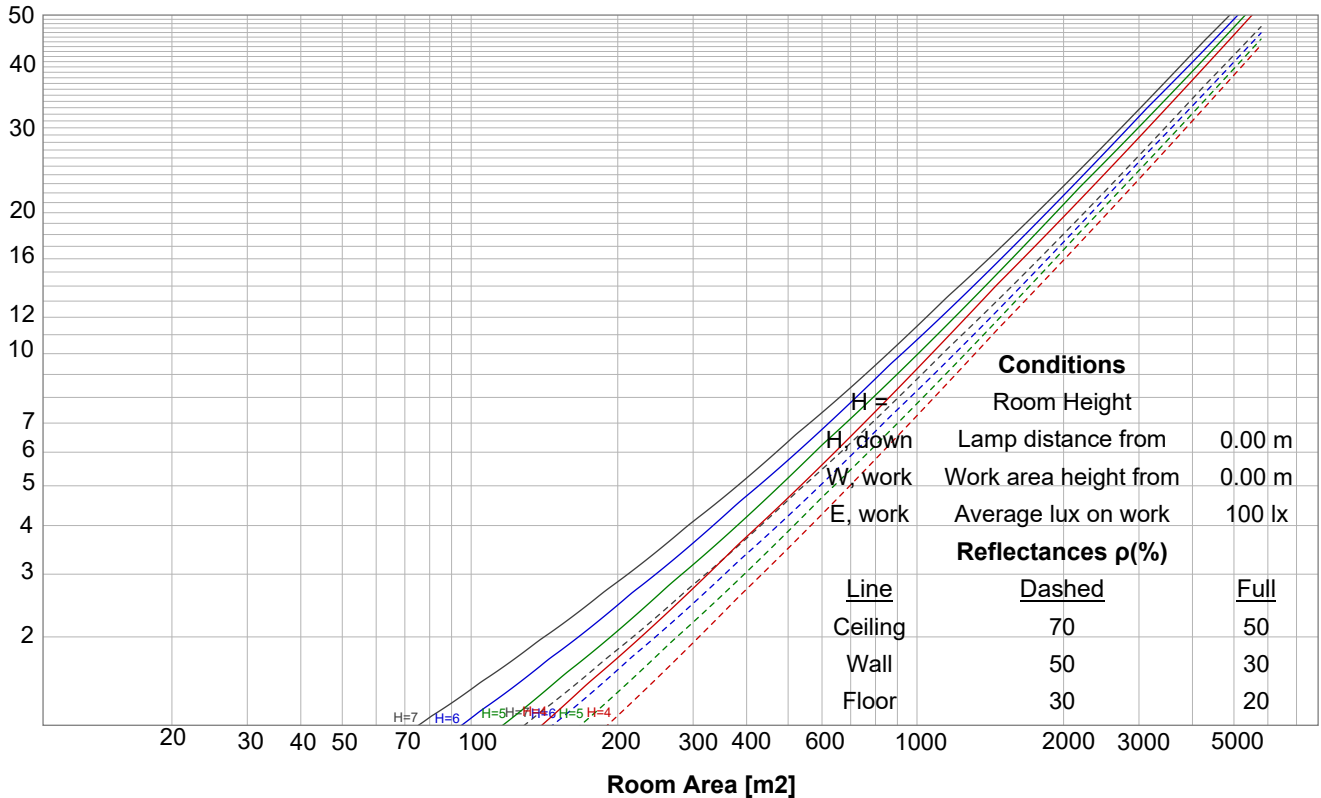


Beam details

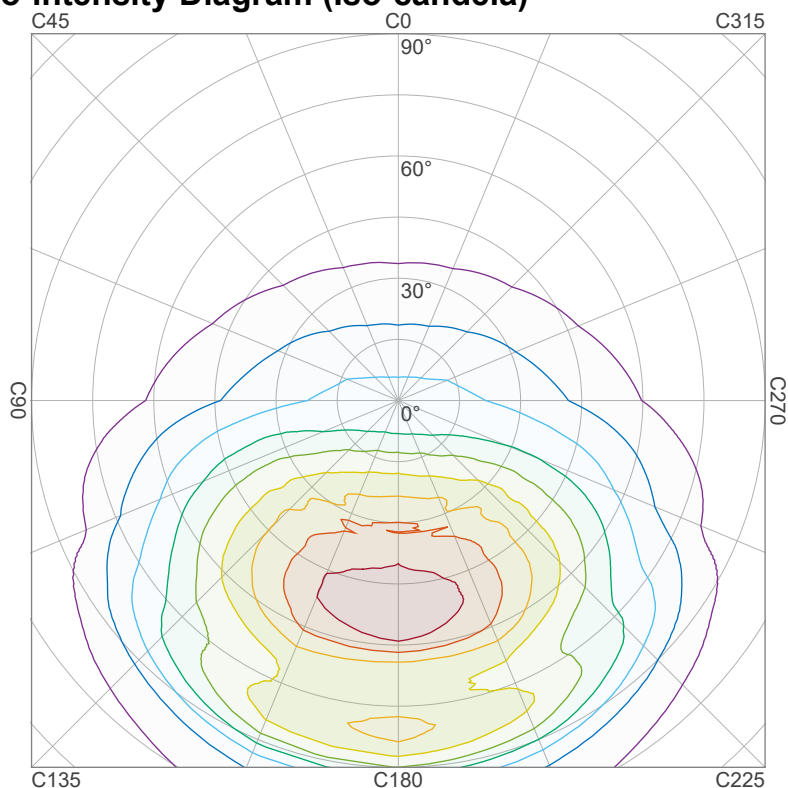


Luminaire budgetary diagram

LAMPS (number of lamps)



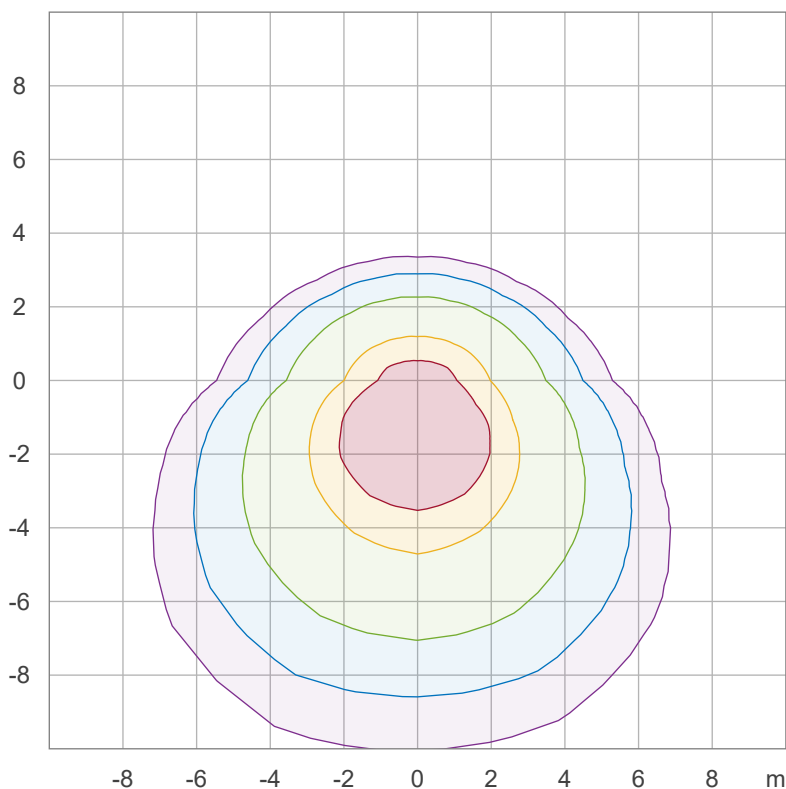
Iso-intensity Diagram (Iso-candela)



90 %	5875.6 cd
80 %	5222.7 cd
70 %	4569.9 cd
60 %	3917.0 cd
50 %	3264.2 cd
40 %	2611.4 cd
30 %	1958.5 cd
20 %	1305.7 cd
10 %	652.8 cd

Peak intensity: 6528.4 cd
 Number of c-planes: 16

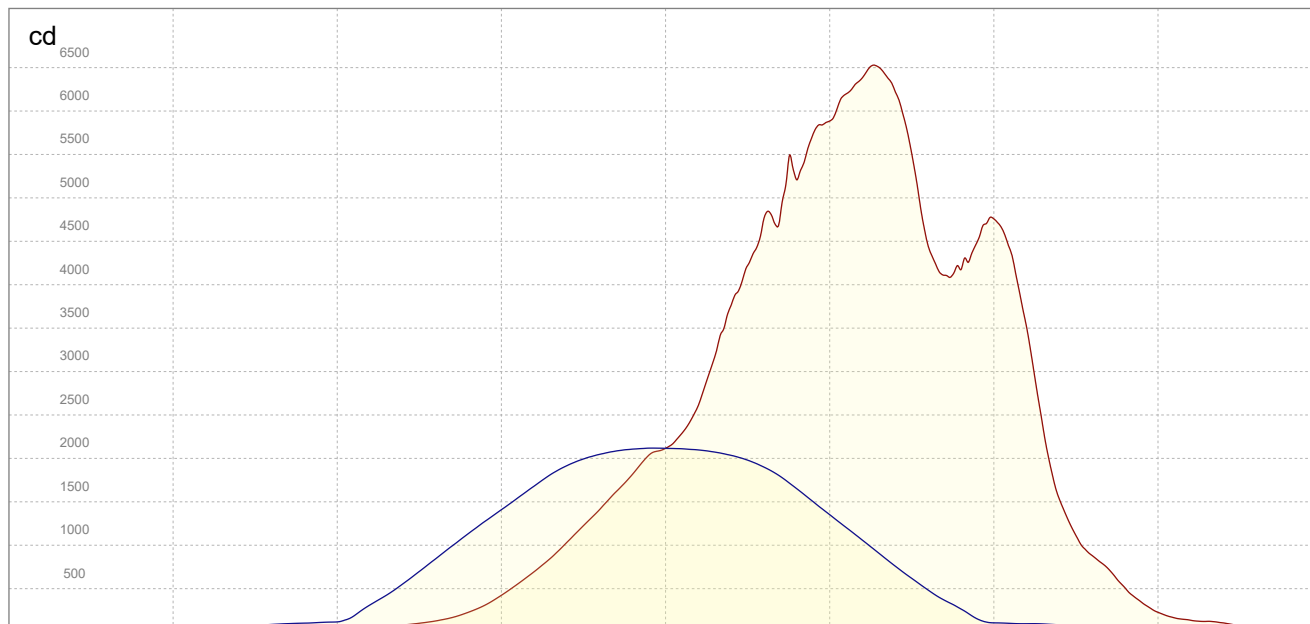
Iso-illuminance Diagram (Iso-lux)



50.0 %	187.3 lx
30.0 %	112.4 lx
10.0 %	37.5 lx
5.0 %	18.7 lx
3.0 %	11.2 lx

Peak illuminance: 374.5 lx
 Mounting height: 3.0 m
 Number of c-planes: 16

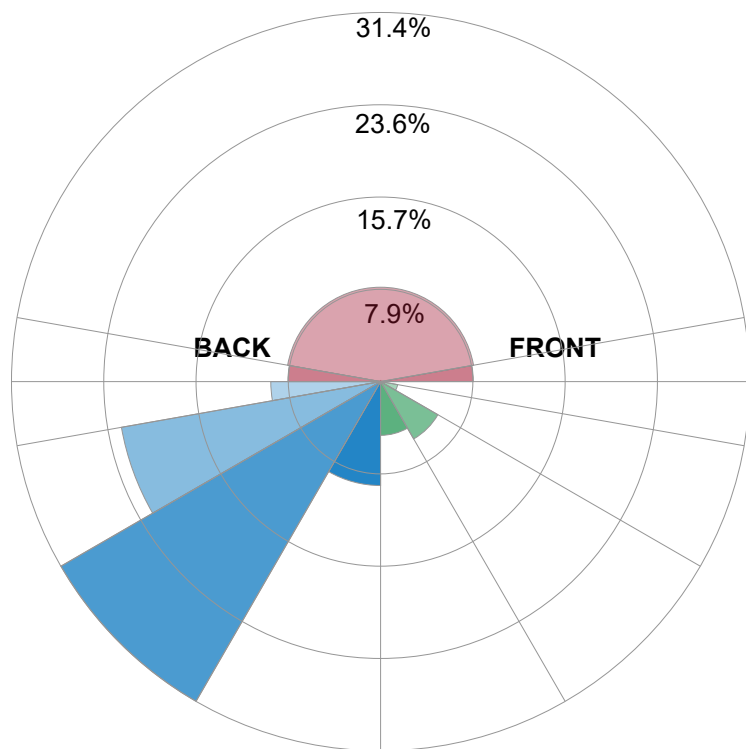
Linear intensity distribution



— C0 - C180
— C90 - C270

IESNA TM-15-07 Luminaire Classification System For Outdoor Luminaires

BUG rating B4 U5 G5



Forward Light

Low (0-30°)	674.9 lm	4.6%
Medium (30-60°)	831.6 lm	5.6%
High (60-80°)	217.5 lm	1.5%
Very High	44.9 lm	0.3%

Back Light

Low (0-30°)	1305.7 lm	8.8%
Medium (30-60°)	4638.6 lm	31.4%
High (60-80°)	3307.2 lm	22.4%
Very High	1379.9 lm	9.4%

Uplight

Low (90-100°)	1164.6 lm	7.9%
High (100-180°)	1186.2 lm	8%

Total

Sum	14758 lm	100%
-----	----------	------