

Laboratory and Equipment

Test lab
Spectrometer Manufacturer and Model
Measurement date

n/a - serial: n/a sensor serial: n/a
n/a, n/a – n/a
10/7/2025

Measurement Conditions

Tested c-planes
Tested gamma angles
Input Power

17 – distance {C_PLANES_DIST}°
181 – {H_PLANES_DIST}°
78.7 W

Tested Light Source

Luminaire
Basic Luminous Shape
Item No.
Manufacturer

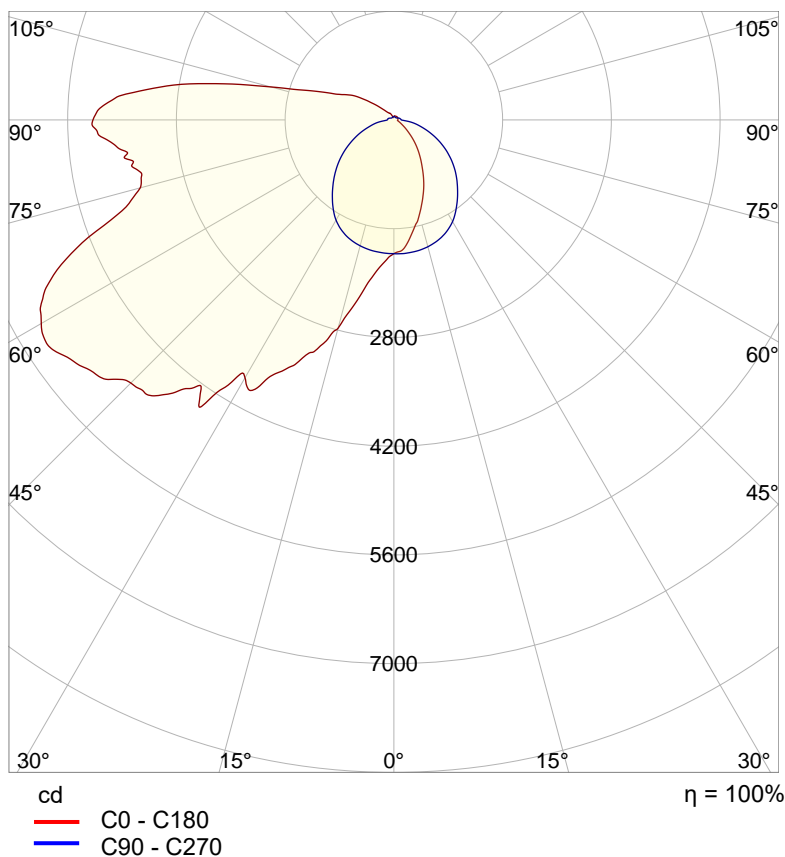
Alpine Wall Pack - ALP-WL-WP120-01
PANEL
Grizzly Lighting Systems

Main Light Measurement Results

Output – Total Lumen (Up% / Down%)
Efficiency
Peak Intensity
Correlated Color Temperature, CCT
Color Rendering Index

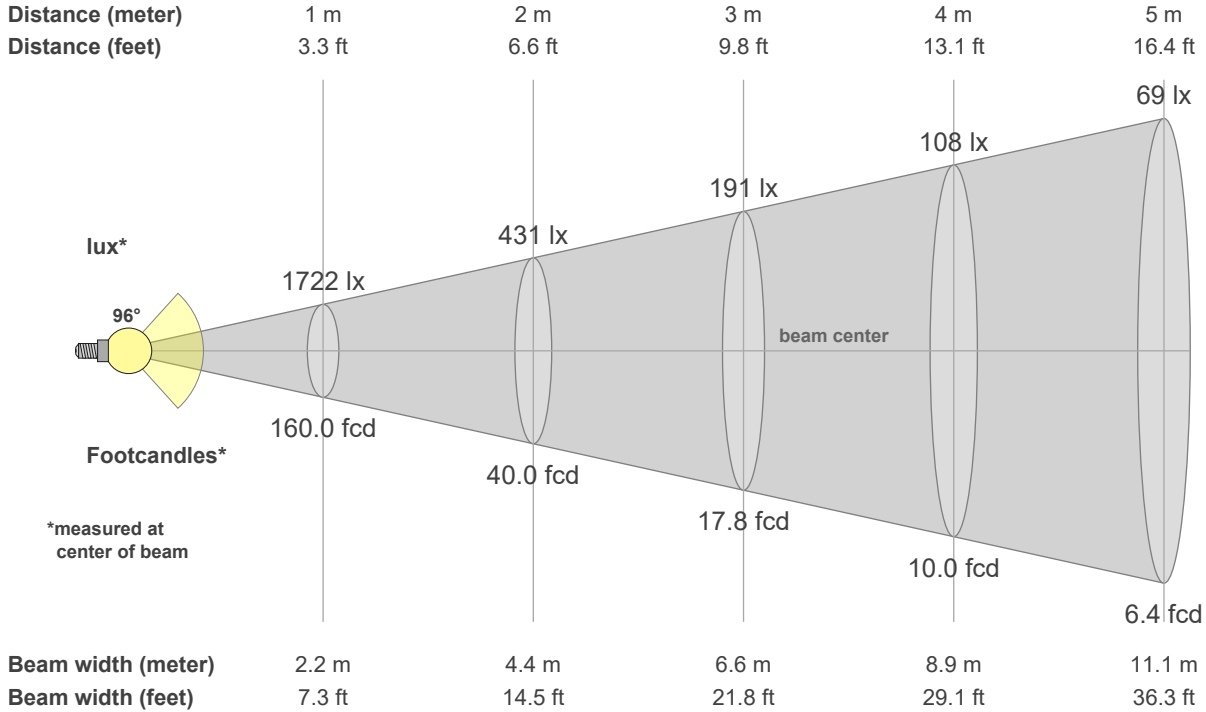
12022 lm – 15.95% / 84.05%
153 lm/W
5316 cd
5000 K
CRI 70.0

Polar light distribution diagram



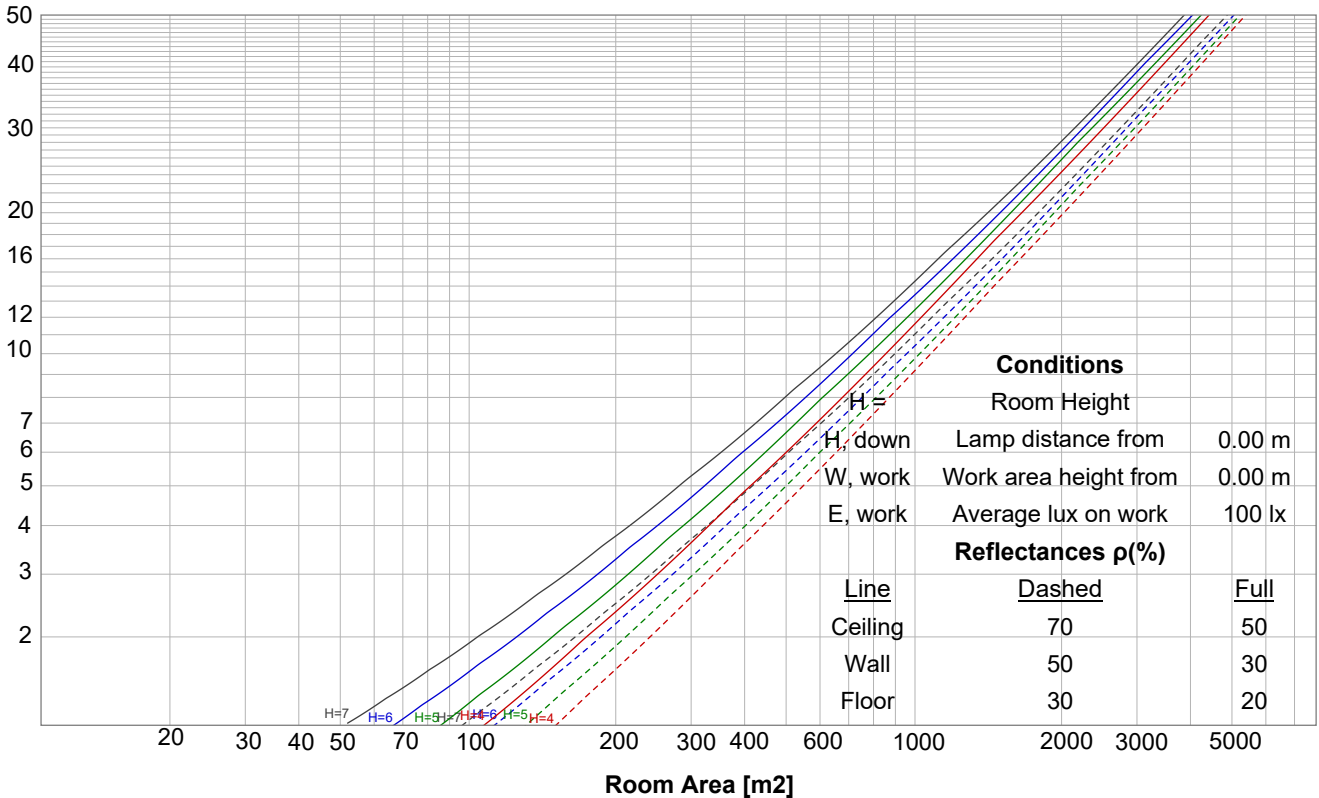
Test report

Beam details

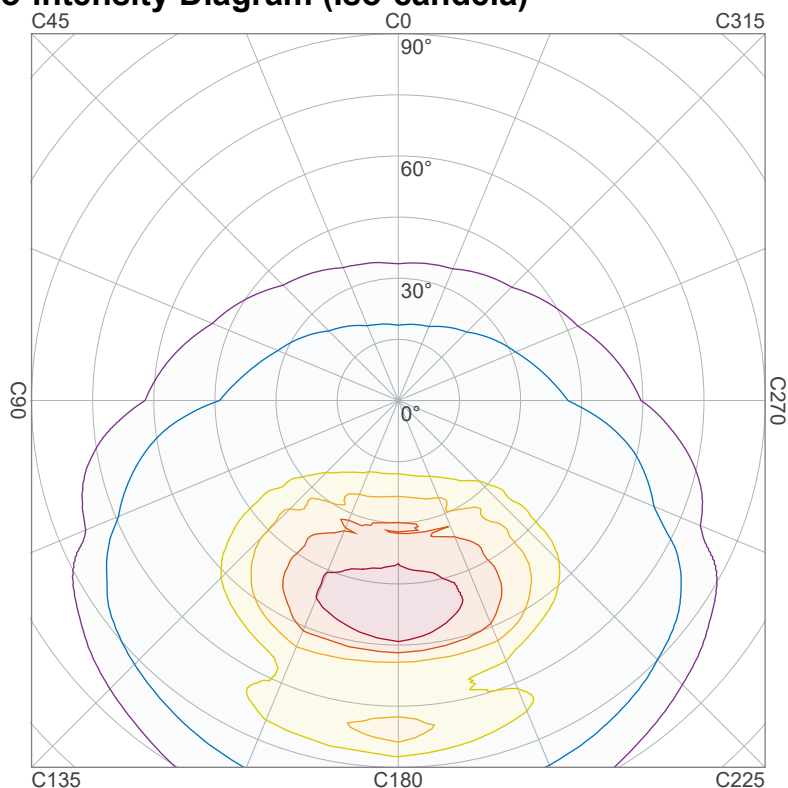


Luminaire budgetary diagram

LAMPS (number of lamps)



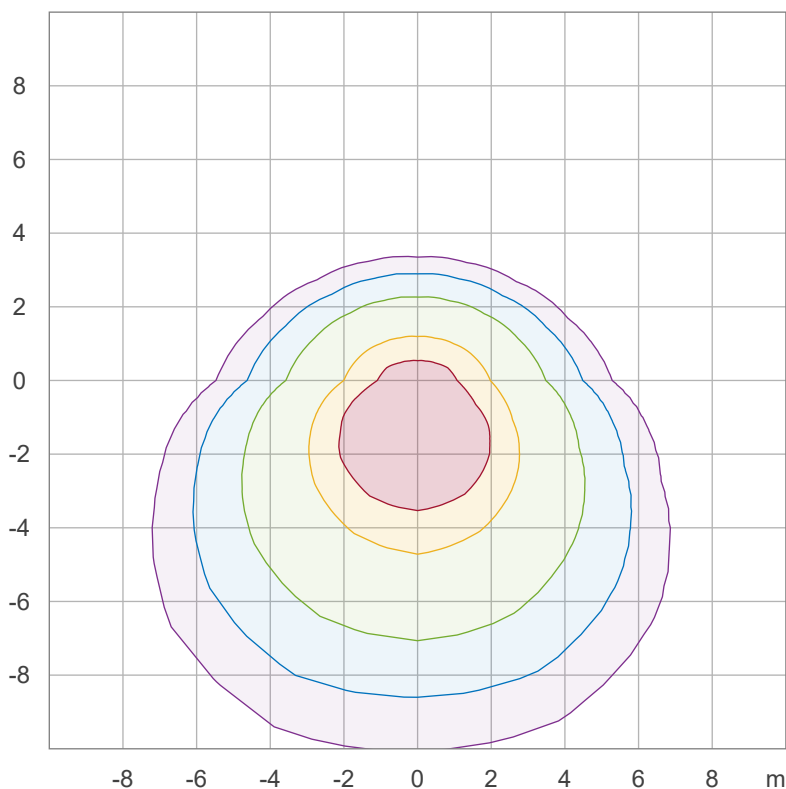
Iso-intensity Diagram (Iso-candela)



90 %	4784.3 cd
80 %	4252.7 cd
70 %	3721.1 cd
60 %	3189.5 cd
50 %	2658.0 cd
40 %	2126.4 cd
30 %	1594.8 cd
20 %	1063.2 cd
10 %	531.6 cd

Peak intensity: 5315.9 cd
 Number of c-planes: 16

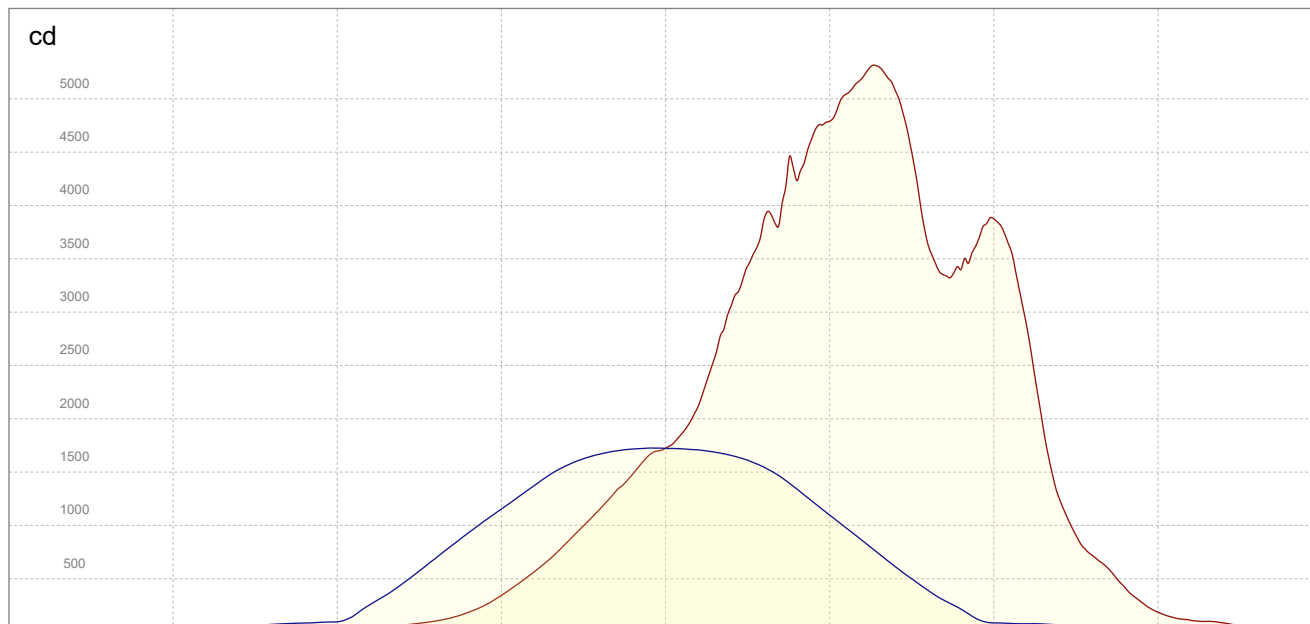
Iso-illuminance Diagram (Iso-lux)



50.0 %	152.1 lx
30.0 %	91.2 lx
10.0 %	30.4 lx
5.0 %	15.2 lx
3.0 %	9.1 lx

Peak illuminance: 304.1 lx
 Mounting height: 3.0 m
 Number of c-planes: 16

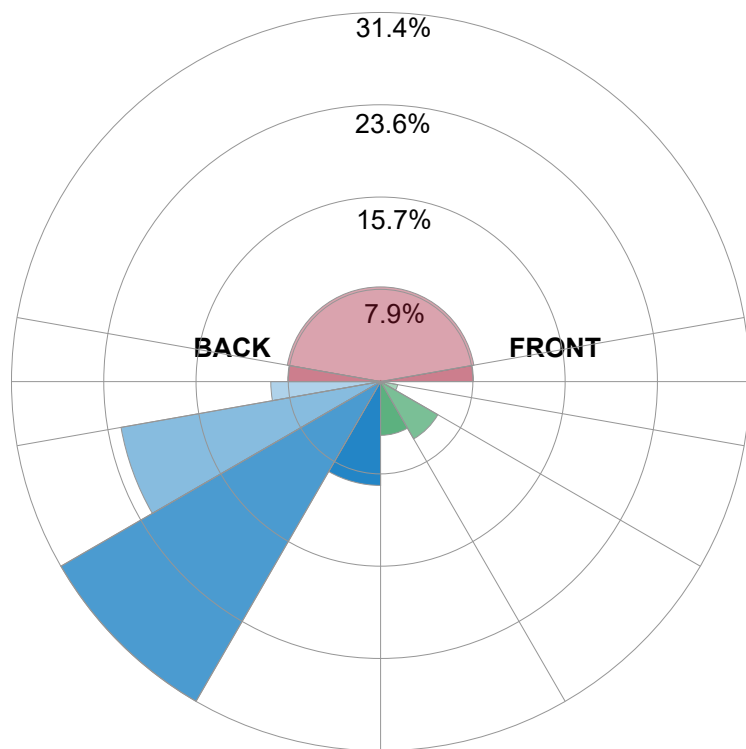
Linear intensity distribution



— C0 - C180
— C90 - C270

IESNA TM-15-07 Luminaire Classification System For Outdoor Luminaires

BUG rating B4 U4 G5



Forward Light

Low (0-30°)	549.4 lm	4.6%
Medium (30-60°)	676.5 lm	5.6%
High (60-80°)	177 lm	1.5%
Very High	36.6 lm	0.3%

Back Light

Low (0-30°)	1062 lm	8.8%
Medium (30-60°)	3776.3 lm	31.4%
High (60-80°)	2696.6 lm	22.4%
Very High	1123.4 lm	9.3%

Uplight

Low (90-100°)	949.6 lm	7.9%
High (100-180°)	968.8 lm	8.1%

Total

Sum	12022 lm	100%
-----	----------	------