

# Test report

## Laboratory and Equipment

Test lab  
Spectrometer Manufacturer and Model  
Measurement date

n/a - serial: n/a sensor serial: n/a  
n/a, n/a – n/a  
8/6/2024

## Measurement Conditions

Tested c-planes  
Tested gamma angles  
Input Power

25 – distance {C\_PLANES\_DIST}°  
181 – {H\_PLANES\_DIST}°  
308.2 W

## Tested Light Source

Luminaire  
Basic Luminous Shape  
Item No.  
Manufacturer

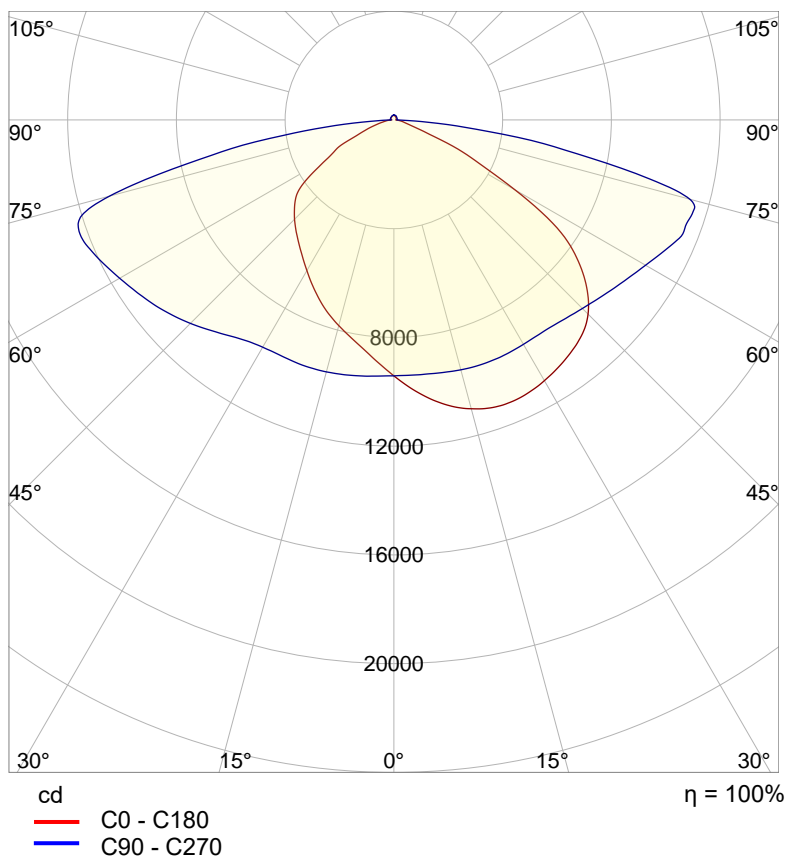
Tundra Area Light - TND-PL-SB300-01  
PANEL  
Grizzly Lighting Systems

## Main Light Measurement Results

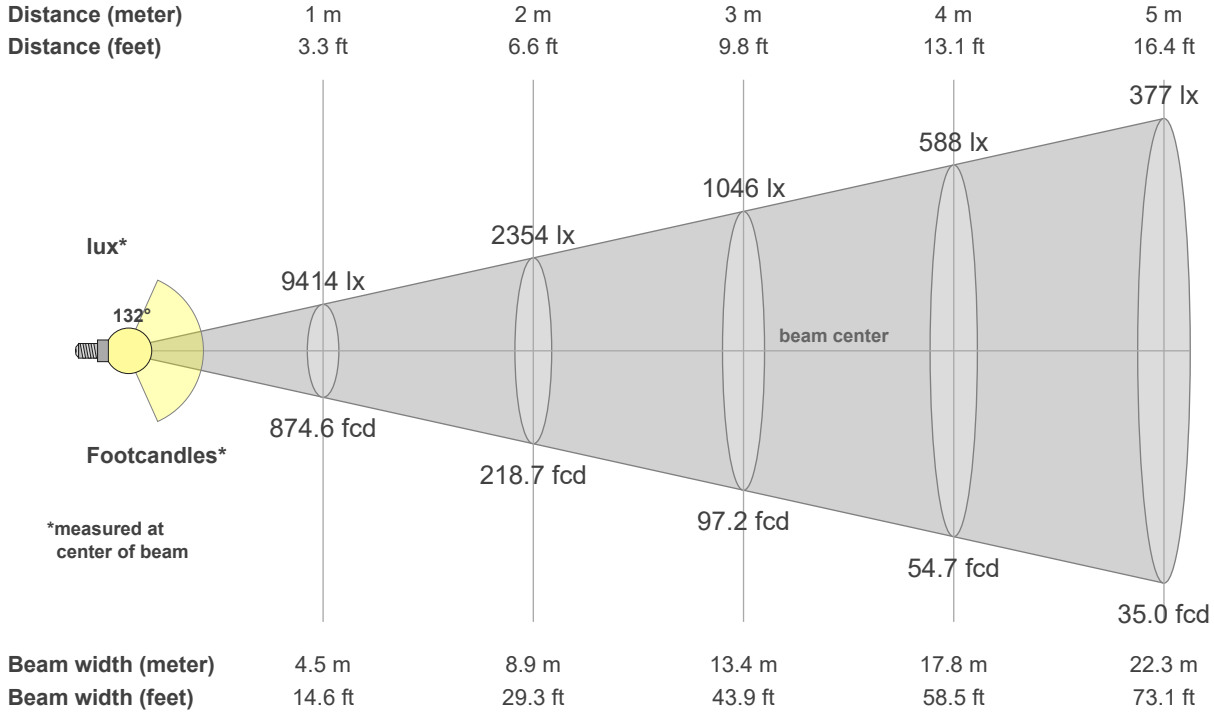
Output – Total Lumen (Up% / Down%)  
Efficiency  
Peak Intensity  
Correlated Color Temperature, CCT  
Color Rendering Index

41180 lm – 1.93% / 98.07%  
134 lm/W  
12594 cd  
5000 K  
CRI 70.0

## Polar light distribution diagram

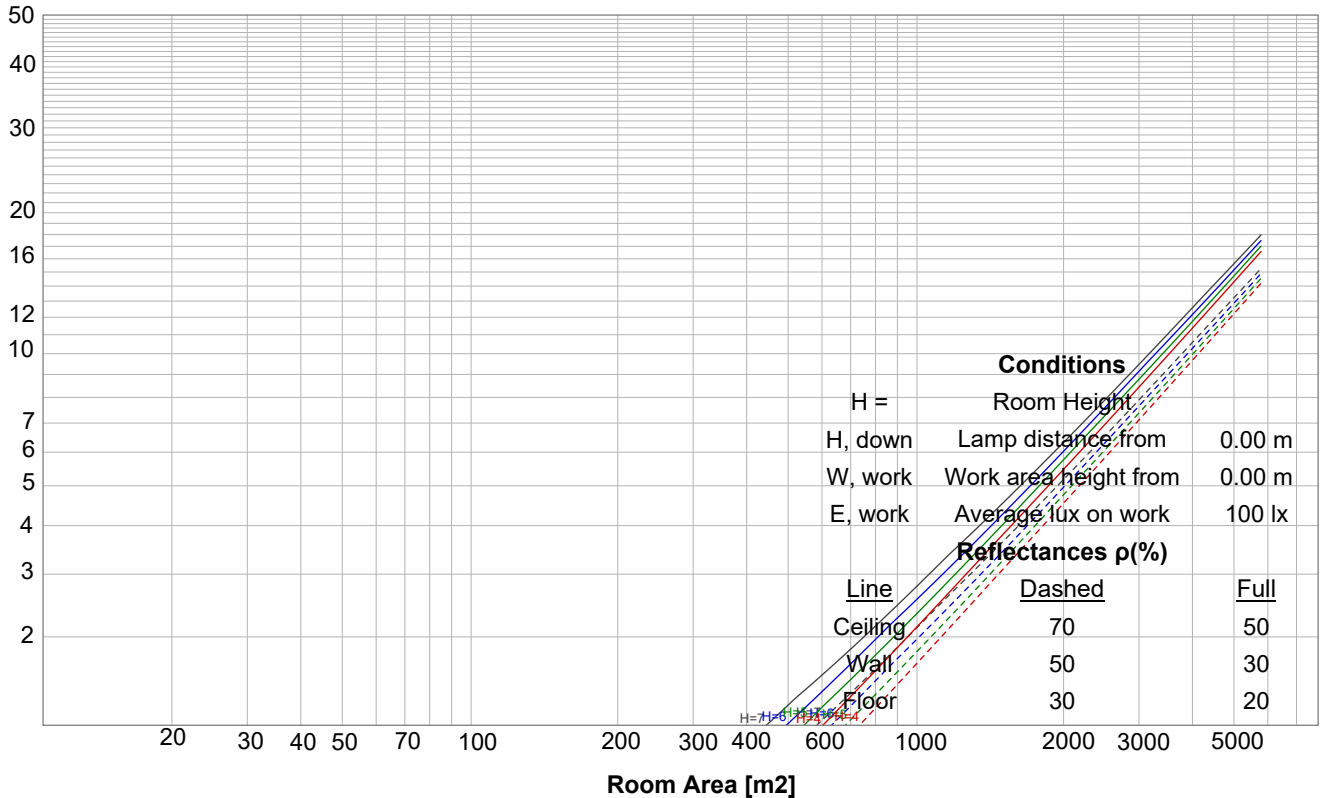


## Beam details

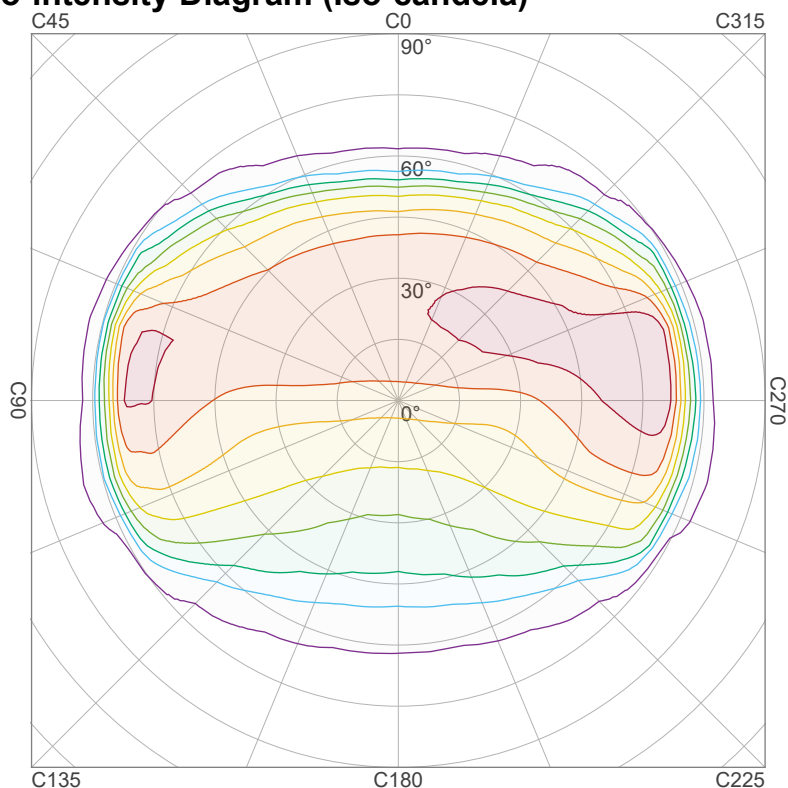


## Luminaire budgetary diagram

LAMPS (number of lamps)



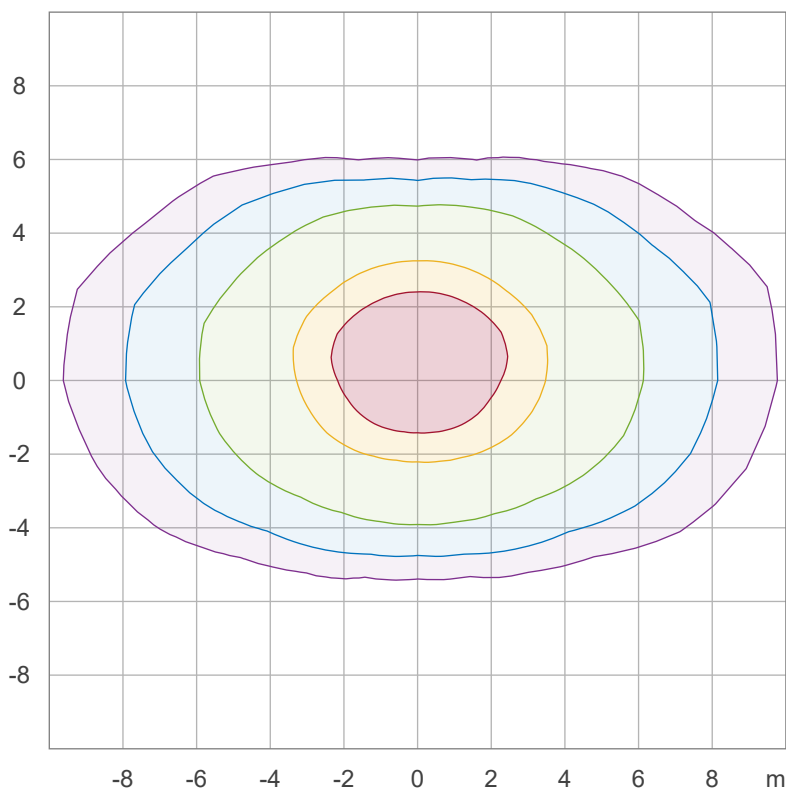
## Iso-intensity Diagram (Iso-candela)



90 %	11334.6 cd
80 %	10075.2 cd
70 %	8815.8 cd
60 %	7556.4 cd
50 %	6297.0 cd
40 %	5037.6 cd
30 %	3778.2 cd
20 %	2518.8 cd
10 %	1259.4 cd

Peak intensity: 12594.0 cd  
 Number of c-planes: 24

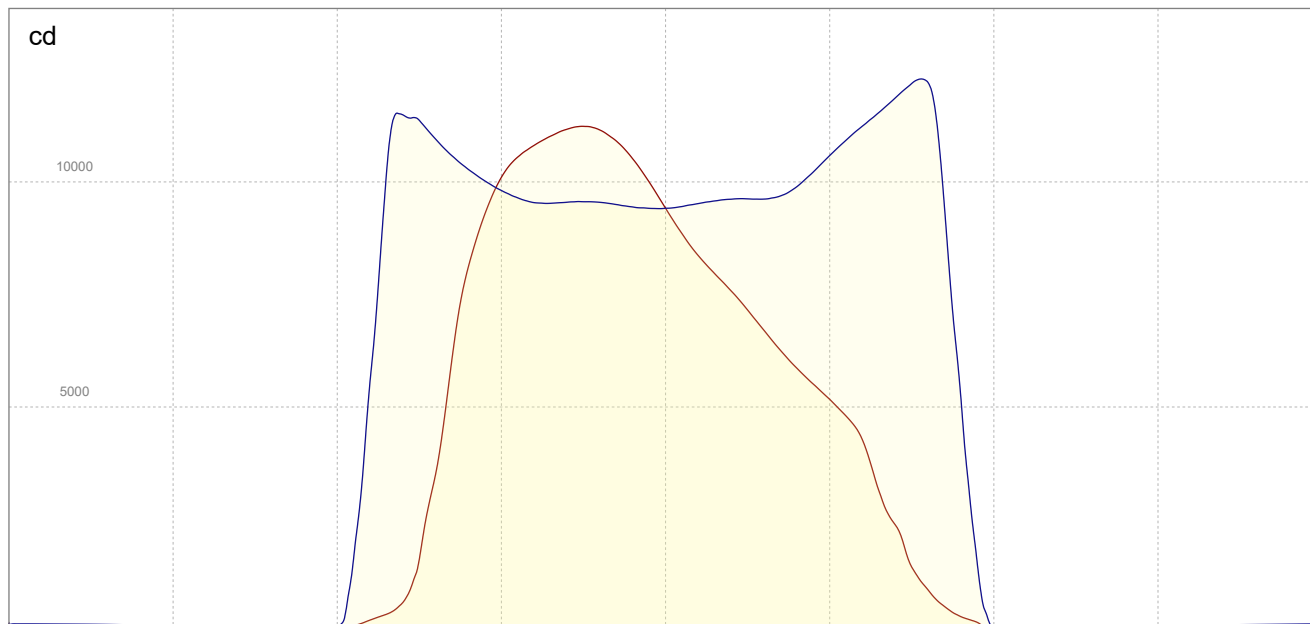
## Iso-illuminance Diagram (Iso-lux)



50.0 %	563.2 lx
30.0 %	337.9 lx
10.0 %	112.6 lx
5.0 %	56.3 lx
3.0 %	33.8 lx

Peak illuminance: 1126.4 lx  
 Mounting height: 3.0 m  
 Number of c-planes: 24

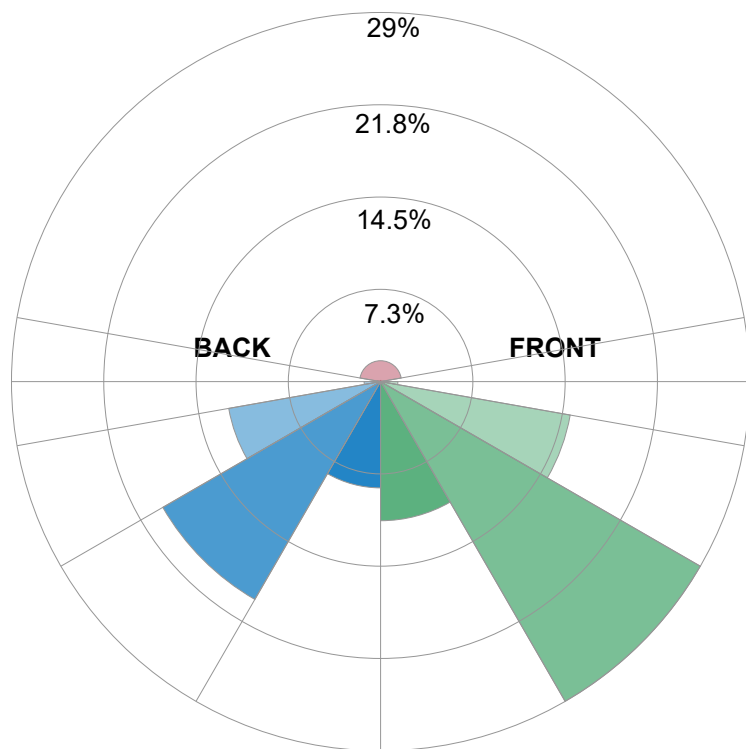
## Linear intensity distribution



— C0 - C180  
— C90 - C270

## IESNA TM-15-07 Luminaire Classification System For Outdoor Luminaires

BUG rating B4 U4 G4



### Forward Light

Low (0-30°)	4505.2 lm	10.9%
Medium (30-60°)	11955. lm	29%
High (60-80°)	6235.6 lm	15.1%
Very High	559.7 lm	1.4%

### Back Light

Low (0-30°)	3441.4 lm	8.4%
Medium (30-60°)	8145.6 lm	19.8%
High (60-80°)	4994.6 lm	12.1%
Very High	534.3 lm	1.3%

### Uplight

Low (90-100°)	117.3 lm	0.3%
High (100-180°)	676.6 lm	1.6%

### Total

Sum	41180 lm	100%
-----	----------	------