

Laboratory and Equipment

Test lab
Spectrometer Manufacturer and Model
Measurement date

n/a - serial: n/a sensor serial: n/a
n/a, n/a – n/a
8/6/2024

Measurement Conditions

Tested c-planes
Tested gamma angles
Input Power

25 – distance {C_PLANES_DIST}°
181 – {H_PLANES_DIST}°
291.4 W

Tested Light Source

Luminaire
Basic Luminous Shape
Item No.
Manufacturer

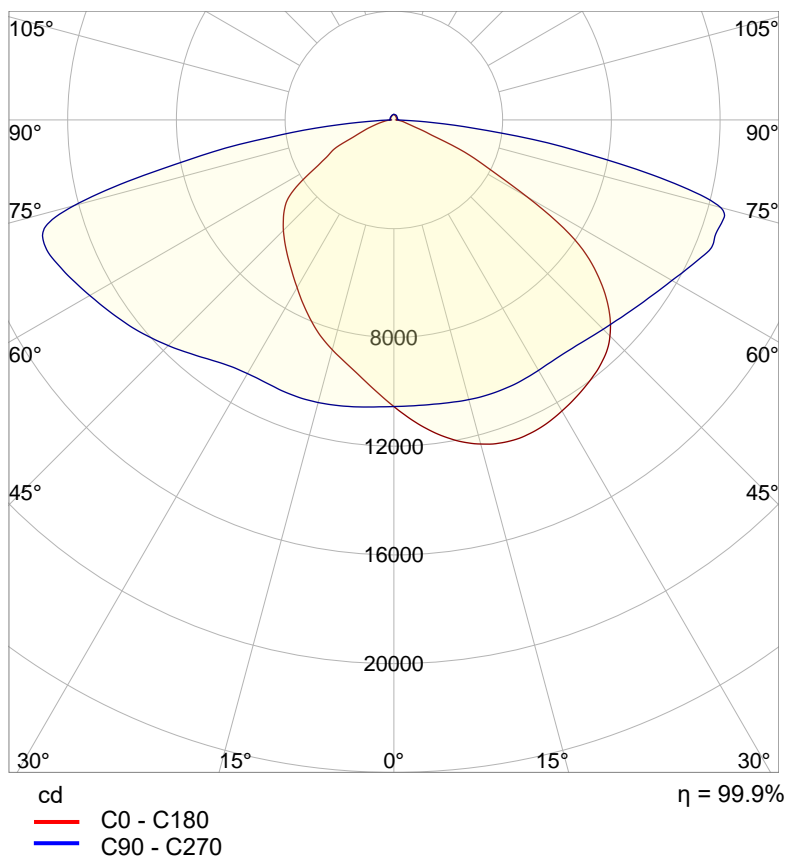
Tundra Area Light - TND-PL-SB300-01
PANEL
Grizzly Lighting Systems

Main Light Measurement Results

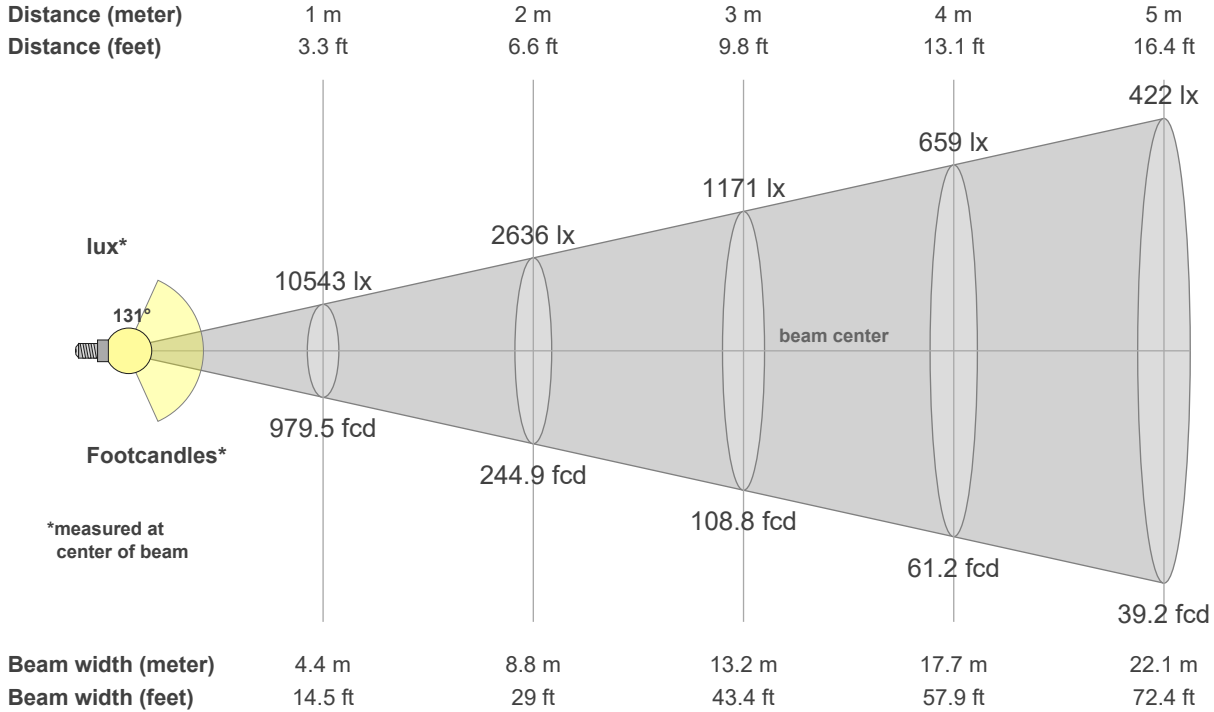
Output – Total Lumen (Up% / Down%)
Efficiency
Peak Intensity
Correlated Color Temperature, CCT
Color Rendering Index

45776 lm – 1.93% / 98.07%
157 lm/W
14046 cd
4000 K
CRI 70.0

Polar light distribution diagram

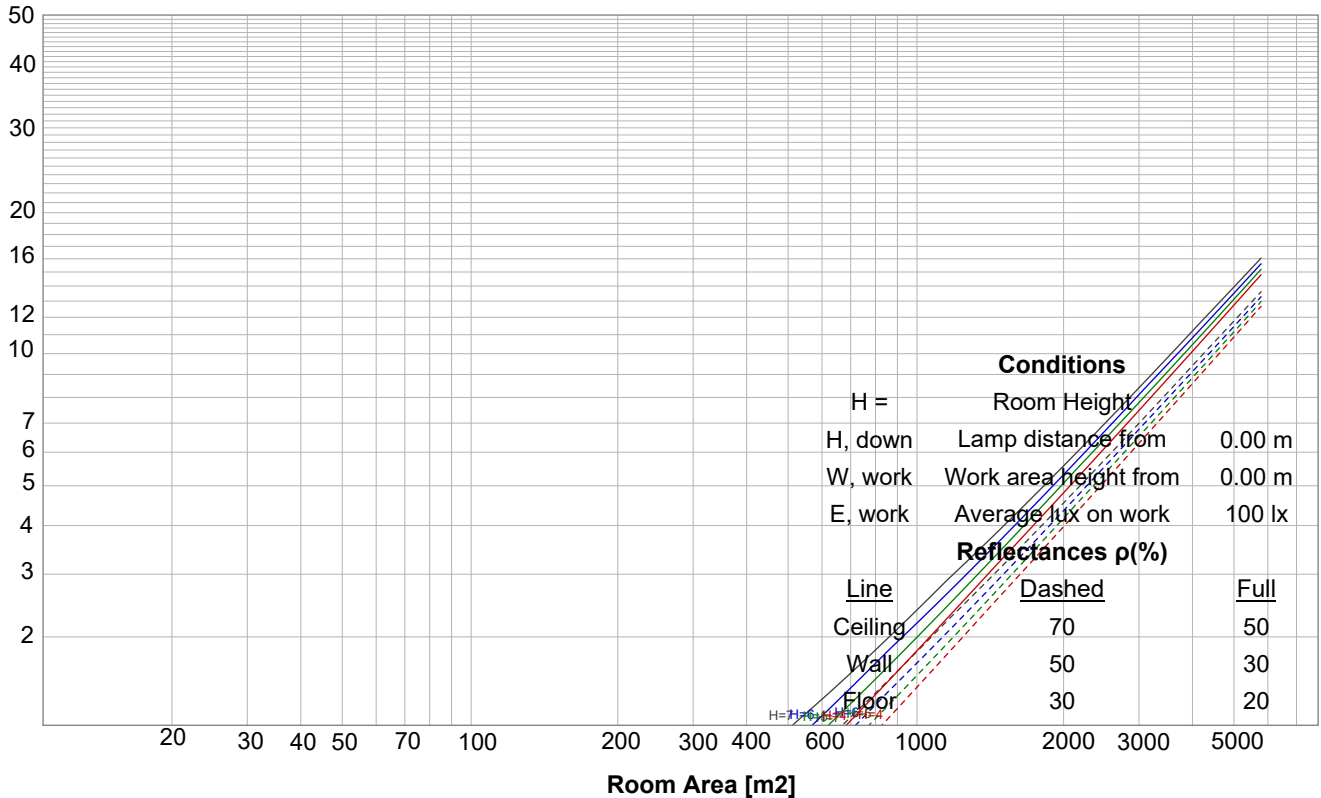


Beam details

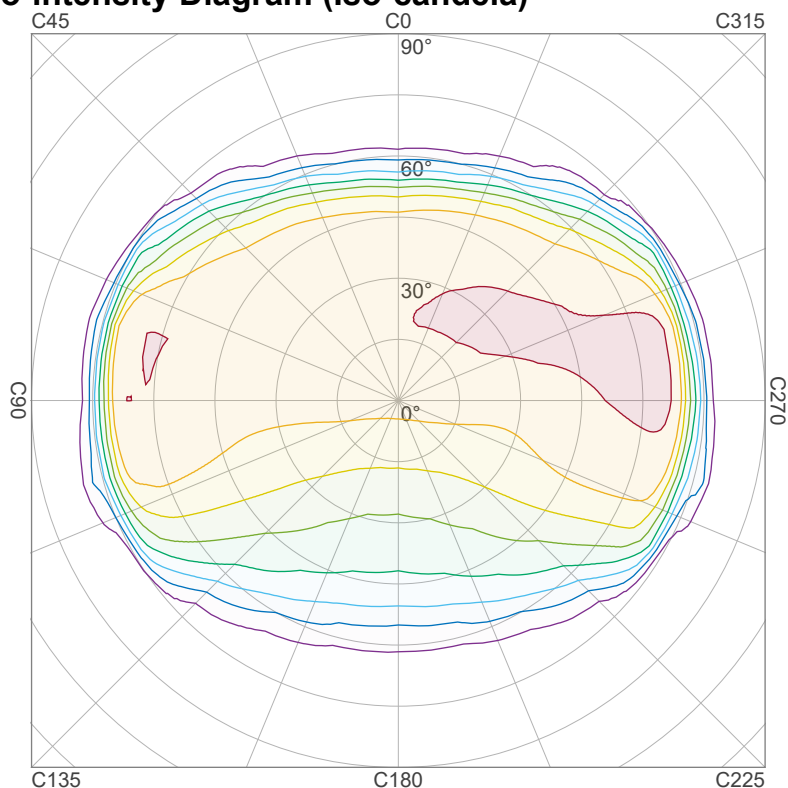


Luminaire budgetary diagram

LAMPS (number of lamps)



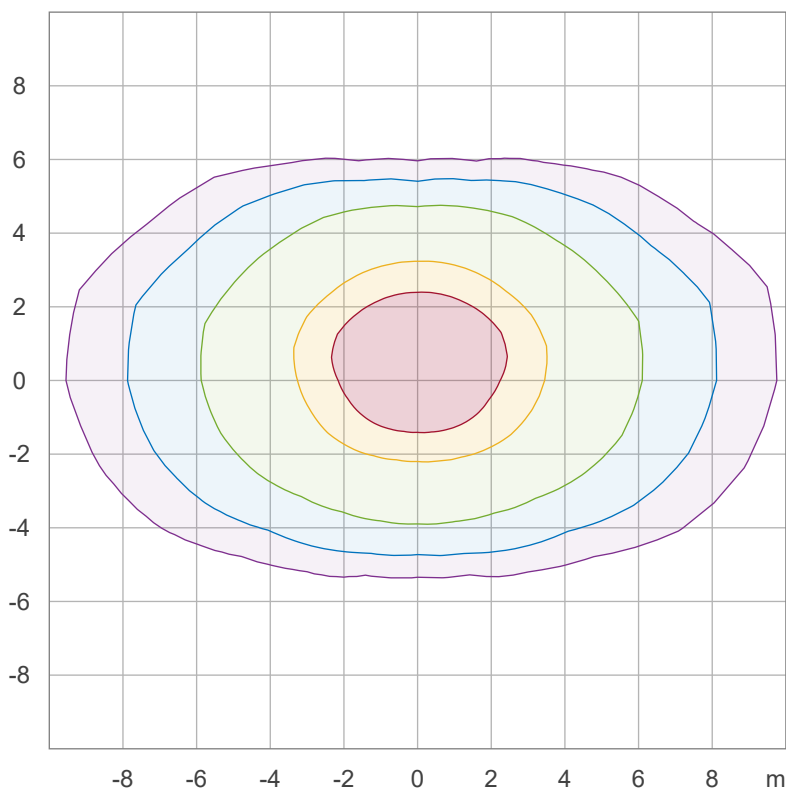
Iso-intensity Diagram (Iso-candela)



90 %	12641.4 cd
80 %	11236.8 cd
70 %	9832.2 cd
60 %	8427.6 cd
50 %	7023.0 cd
40 %	5618.4 cd
30 %	4213.8 cd
20 %	2809.2 cd
10 %	1404.6 cd

Peak intensity: 14046.0 cd
 Number of c-planes: 24

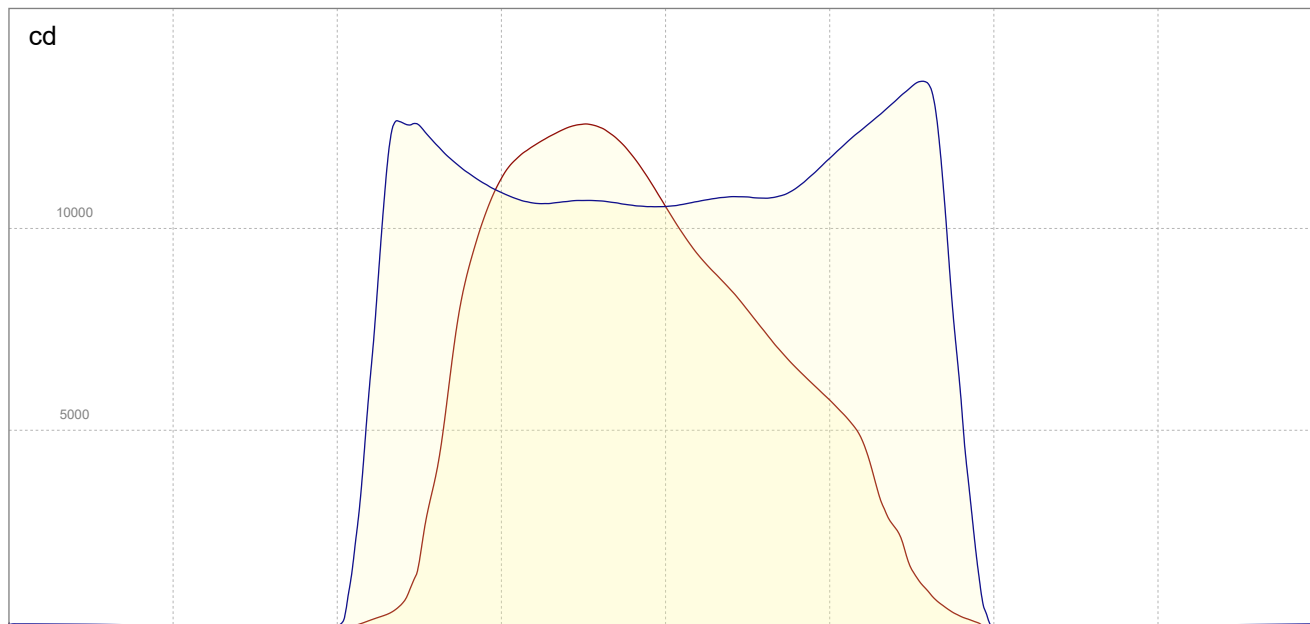
Iso-illuminance Diagram (Iso-lux)



50.0 %	631.6 lx
30.0 %	379.0 lx
10.0 %	126.3 lx
5.0 %	63.2 lx
3.0 %	37.9 lx

Peak illuminance: 1263.2 lx
 Mounting height: 3.0 m
 Number of c-planes: 24

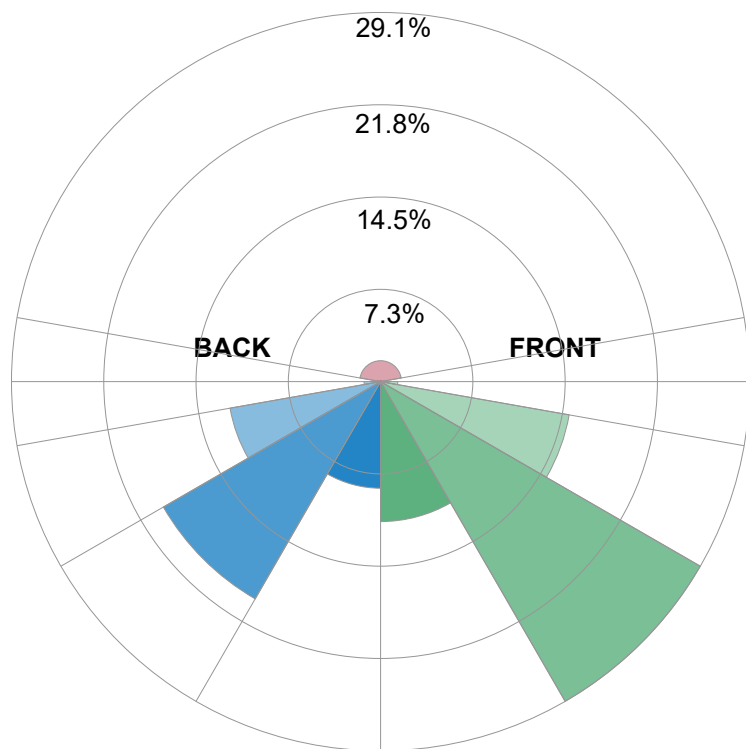
Linear intensity distribution



— C0 - C180
— C90 - C270

IESNA TM-15-07 Luminaire Classification System For Outdoor Luminaires

BUG rating B5 U4 G5



Forward Light

Low (0-30°)	5045.8 lm	11%
Medium (30-60°)	13308. lm	29.1%
High (60-80°)	6903.7 lm	15.1%
Very High	619.3 lm	1.4%

Back Light

Low (0-30°)	3843.6 lm	8.4%
Medium (30-60°)	9044.8 lm	19.8%
High (60-80°)	5511.7 lm	12%
Very High	596.9 lm	1.3%

Uplight

Low (90-100°)	131 lm	0.3%
High (100-180°)	754.4 lm	1.6%

Total

Sum	45776 lm	100%
-----	----------	------