

# Test report

## Laboratory and Equipment

Test lab  
Spectrometer Manufacturer and Model  
Measurement date

n/a - serial: n/a sensor serial: n/a  
n/a, n/a – n/a  
8/6/2024

## Measurement Conditions

Tested c-planes  
Tested gamma angles  
Input Power

25 – distance {C\_PLANES\_DIST}°  
181 – {H\_PLANES\_DIST}°  
310.5 W

## Tested Light Source

Luminaire  
Basic Luminous Shape  
Item No.  
Manufacturer

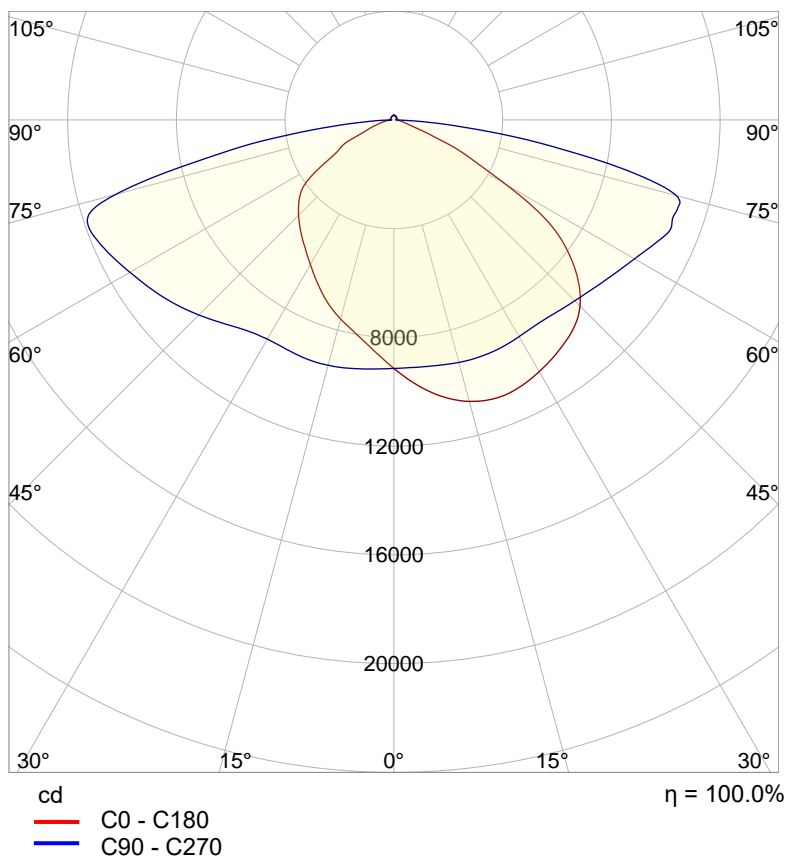
Tundra Area Light - TND-PL-SB300-01  
PANEL  
Grizzly Lighting Systems

## Main Light Measurement Results

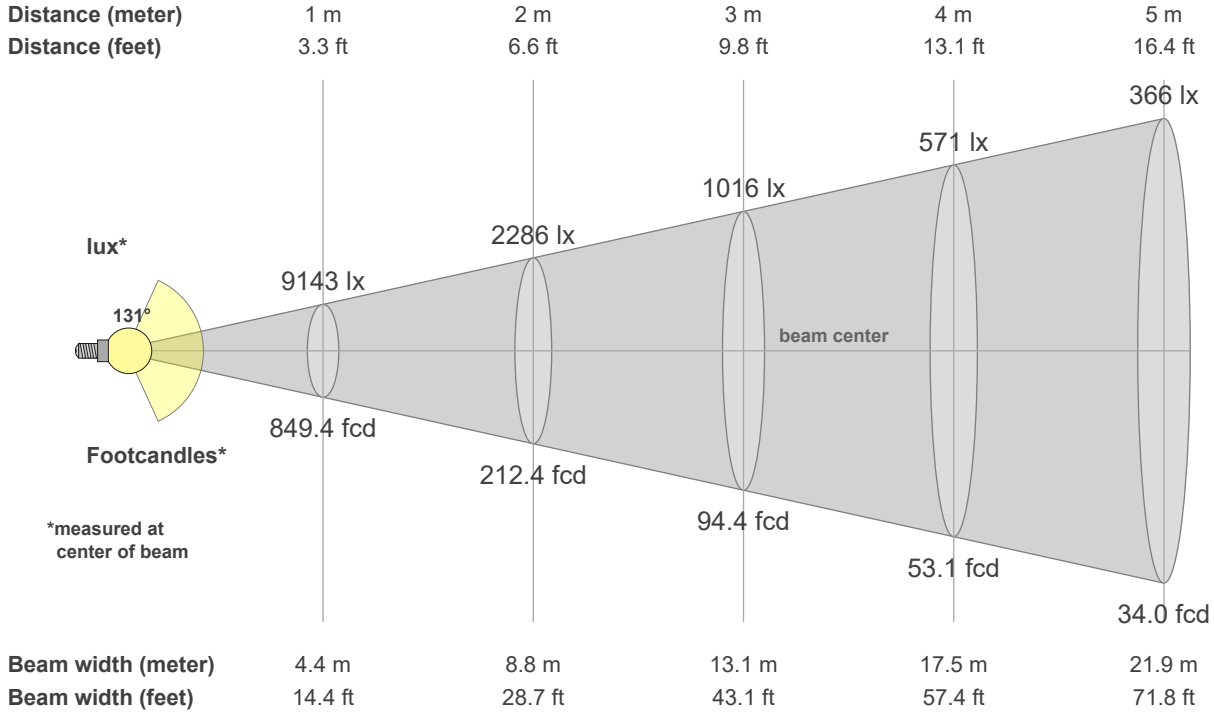
Output – Total Lumen (Up% / Down%)  
Efficiency  
Peak Intensity  
Correlated Color Temperature, CCT  
Color Rendering Index

39491 lm – 1.95% / 98.05%  
127 lm/W  
12172 cd  
3000 K  
CRI 70.0

## Polar light distribution diagram

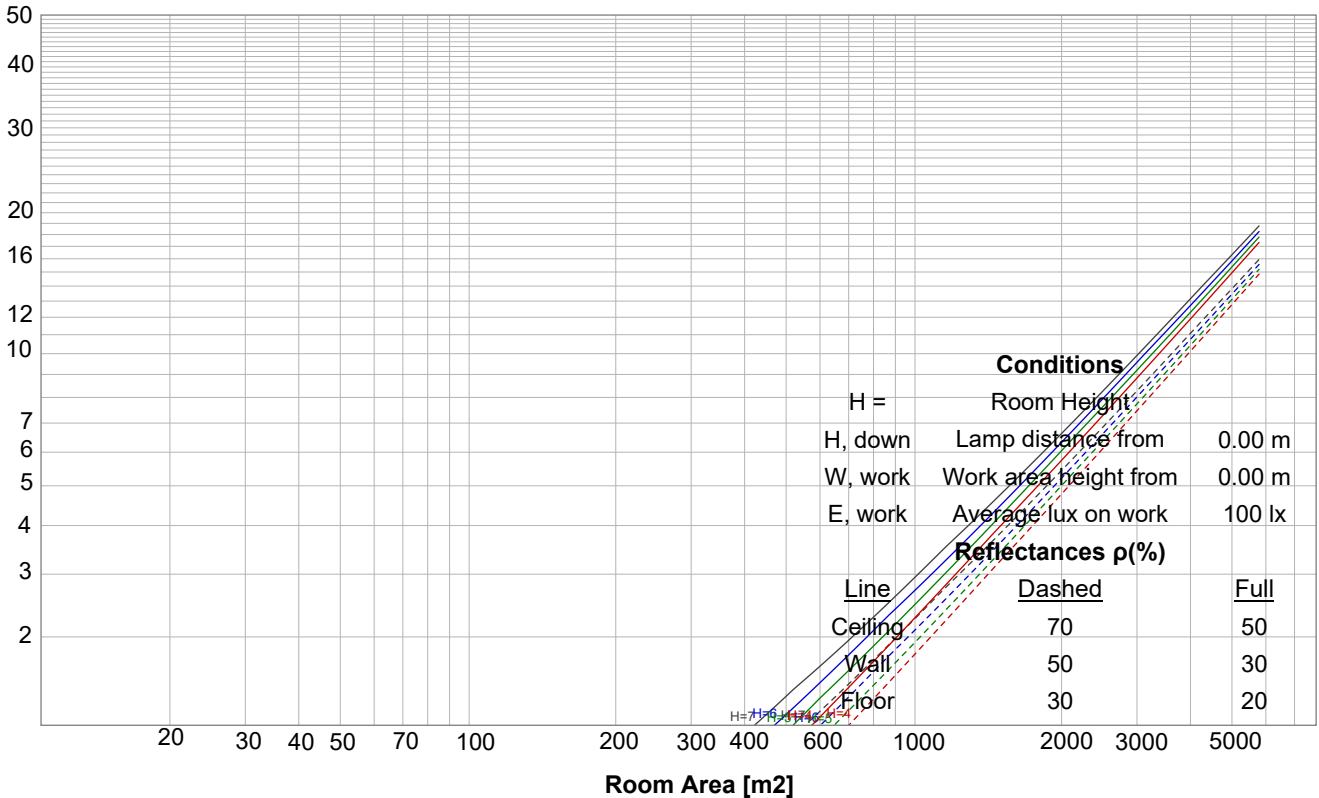


## Beam details

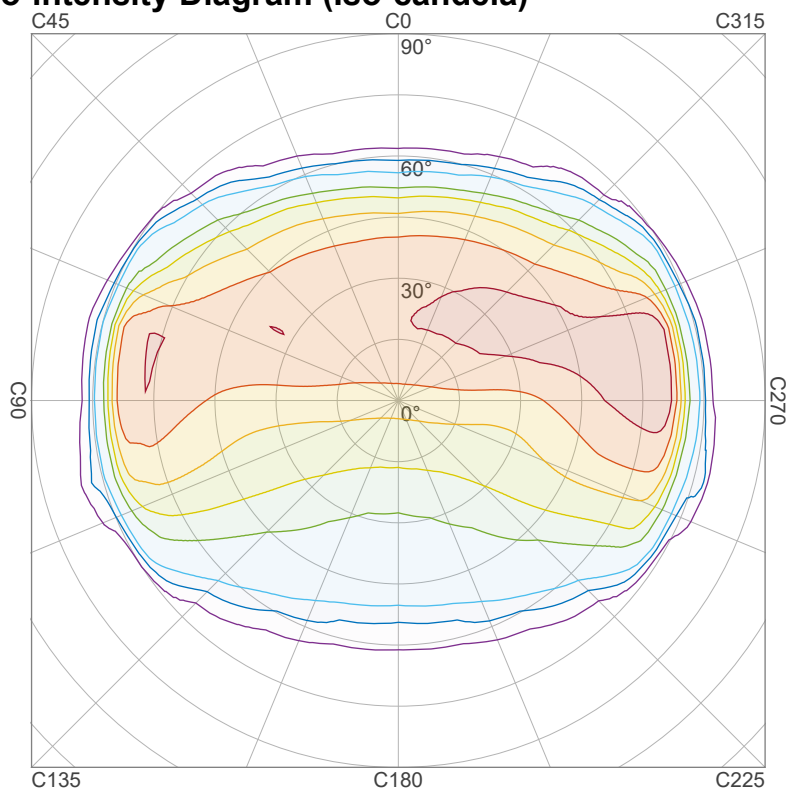


## Luminaire budgetary diagram

LAMPS (number of lamps)



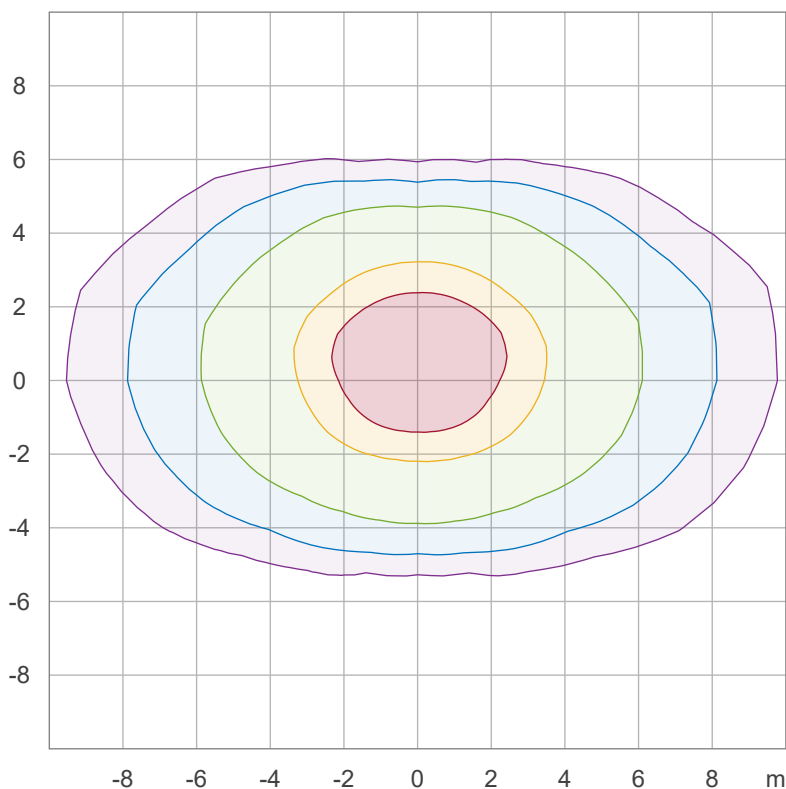
## Iso-intensity Diagram (Iso-candela)



90 %	10954.8 cd
80 %	9737.6 cd
70 %	8520.4 cd
60 %	7303.2 cd
50 %	6086.0 cd
40 %	4868.8 cd
30 %	3651.6 cd
20 %	2434.4 cd
10 %	1217.2 cd

Peak intensity: 12172.0 cd  
 Number of c-planes: 24

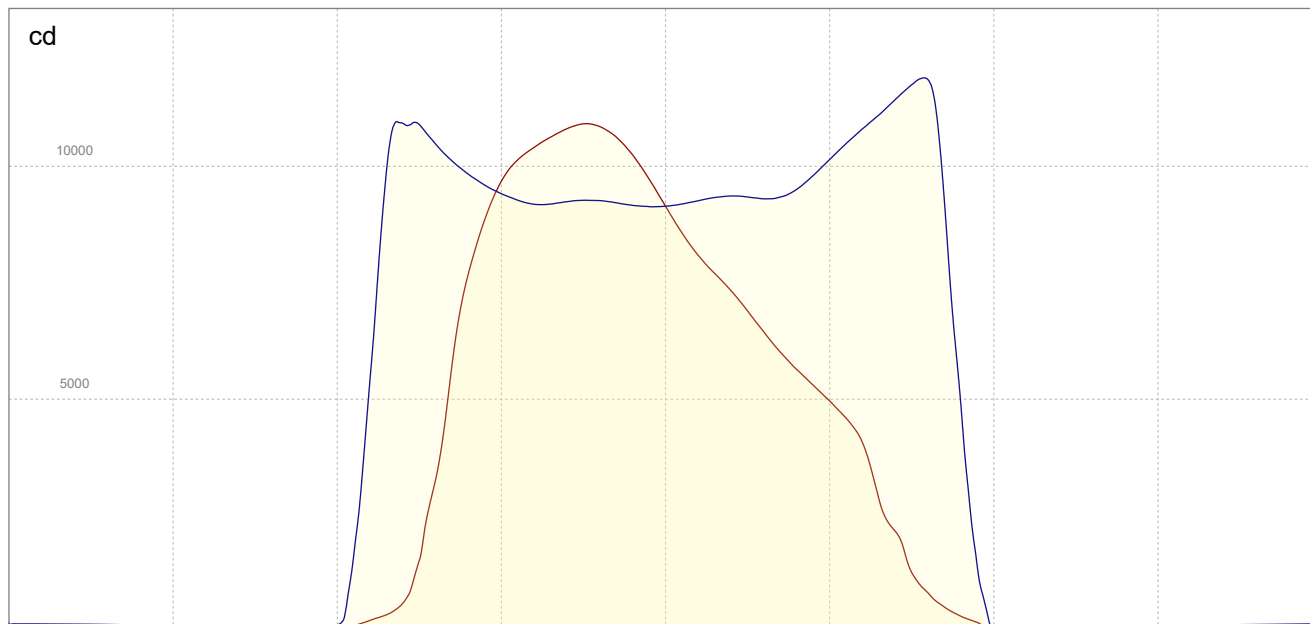
## Iso-illuminance Diagram (Iso-lux)



50.0 %	548.4 lx
30.0 %	329.1 lx
10.0 %	109.7 lx
5.0 %	54.8 lx
3.0 %	32.9 lx

Peak illuminance: 1096.9 lx  
 Mounting height: 3.0 m  
 Number of c-planes: 24

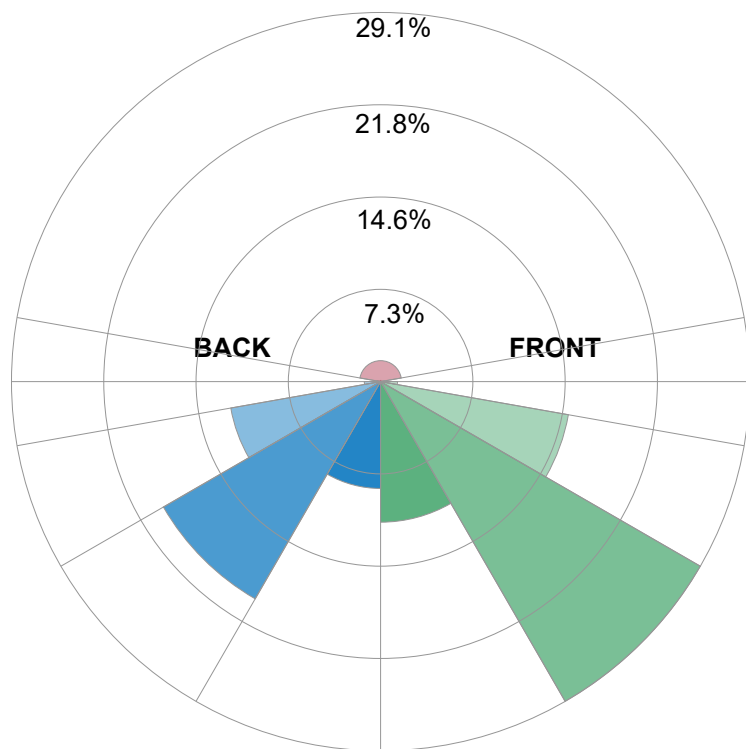
## Linear intensity distribution



— C0 - C180  
— C90 - C270

## IESNA TM-15-07 Luminaire Classification System For Outdoor Luminaires

BUG rating B4 U4 G4



### Forward Light

Low (0-30°)	4376.5 lm	11.1%
Medium (30-60°)	11492. lm	29.1%
High (60-80°)	5936.9 lm	15%
Very High	524.4 lm	1.3%

### Back Light

Low (0-30°)	3326.5 lm	8.4%
Medium (30-60°)	7808.9 lm	19.8%
High (60-80°)	4735.9 lm	12%
Very High	507.4 lm	1.3%

### Uplight

Low (90-100°)	117.6 lm	0.3%
High (100-180°)	652.4 lm	1.7%

### Total

Sum	39491 lm	100%
-----	----------	------