

Test report

Laboratory and Equipment

Test lab
Spectrometer Manufacturer and Model
Measurement date

n/a - serial: n/a sensor serial: n/a
n/a, n/a – n/a
8/6/2024

Measurement Conditions

Tested c-planes
Tested gamma angles
Input Power

25 – distance {C_PLANES_DIST}°
181 – {H_PLANES_DIST}°
258.4 W

Tested Light Source

Luminaire
Basic Luminous Shape
Item No.
Manufacturer

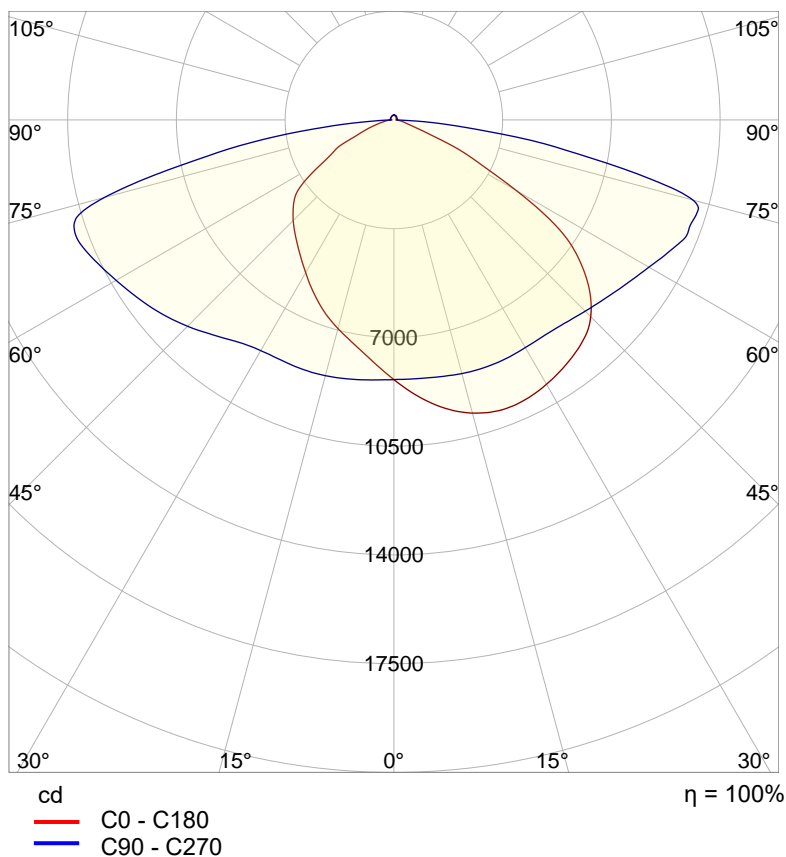
Tundra Area Light - TND-PL-SB300-01
PANEL
Grizzly Lighting Systems

Main Light Measurement Results

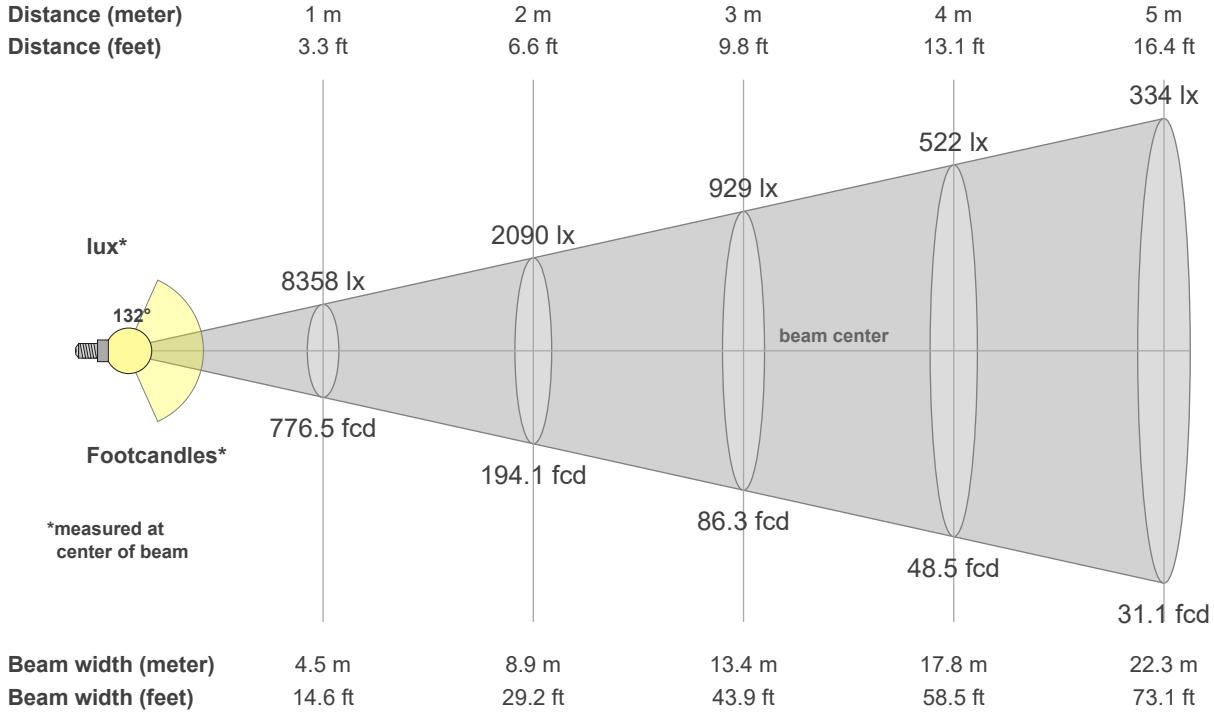
Output – Total Lumen (Up% / Down%)
Efficiency
Peak Intensity
Correlated Color Temperature, CCT
Color Rendering Index

36532 lm – 1.93% / 98.07%
141 lm/W
11149 cd
5000 K
CRI 70.0

Polar light distribution diagram

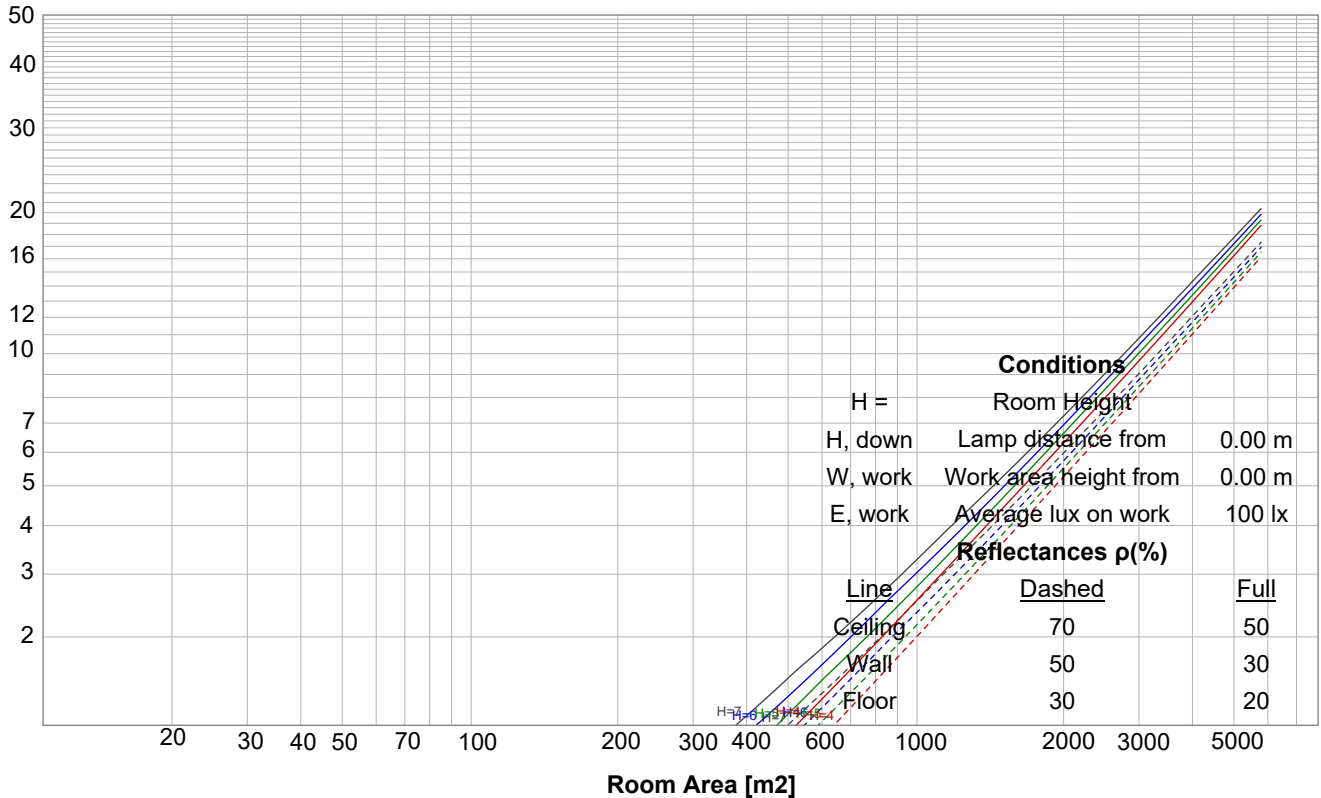


Beam details

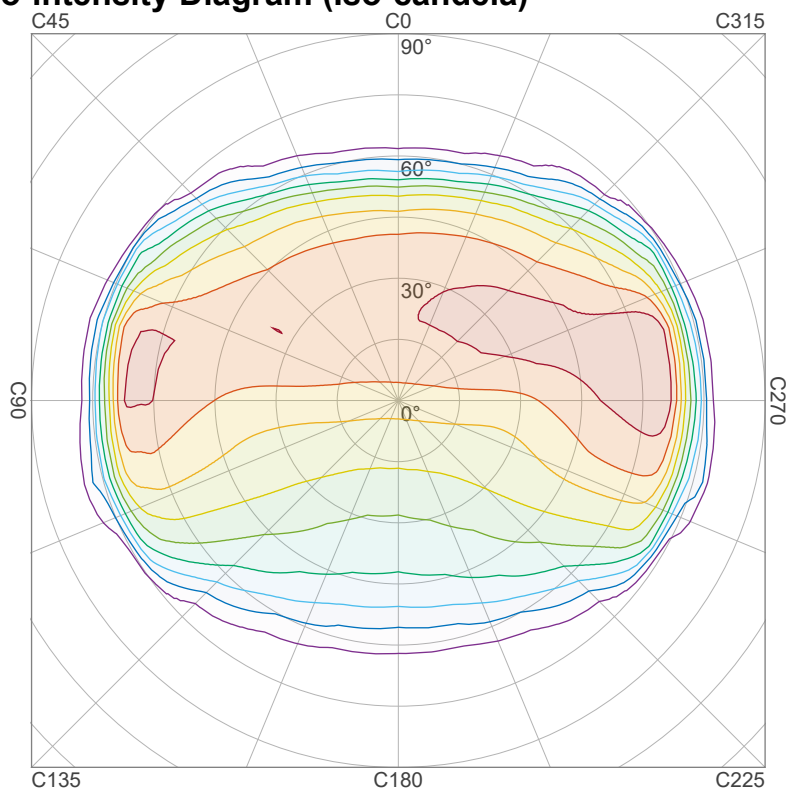


Luminaire budgetary diagram

LAMPS (number of lamps)



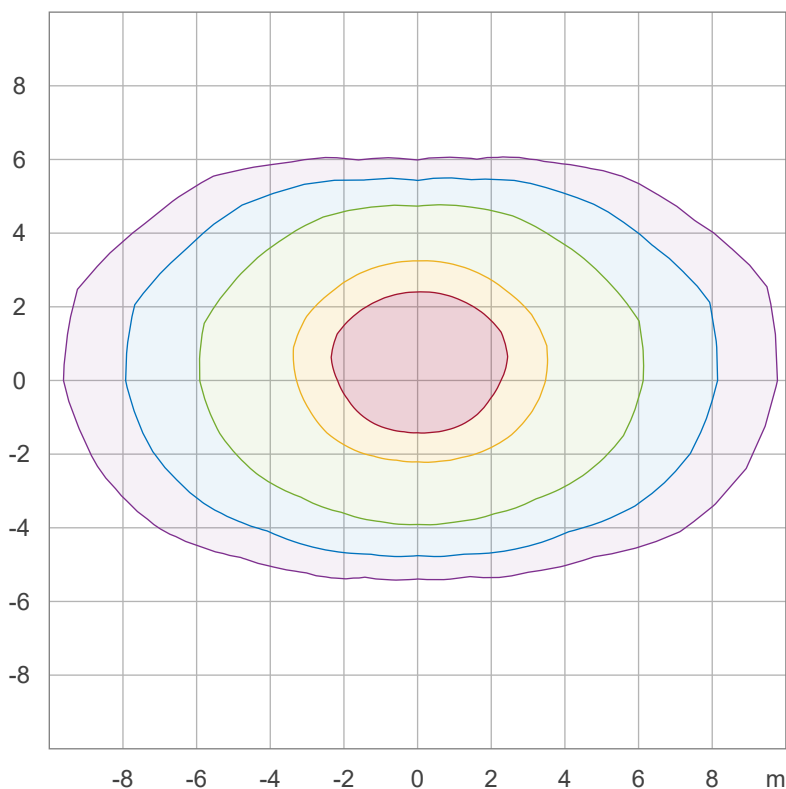
Iso-intensity Diagram (Iso-candela)



90 %	10034.1 cd
80 %	8919.2 cd
70 %	7804.3 cd
60 %	6689.4 cd
50 %	5574.5 cd
40 %	4459.6 cd
30 %	3344.7 cd
20 %	2229.8 cd
10 %	1114.9 cd

Peak intensity: 11149.0 cd
 Number of c-planes: 24

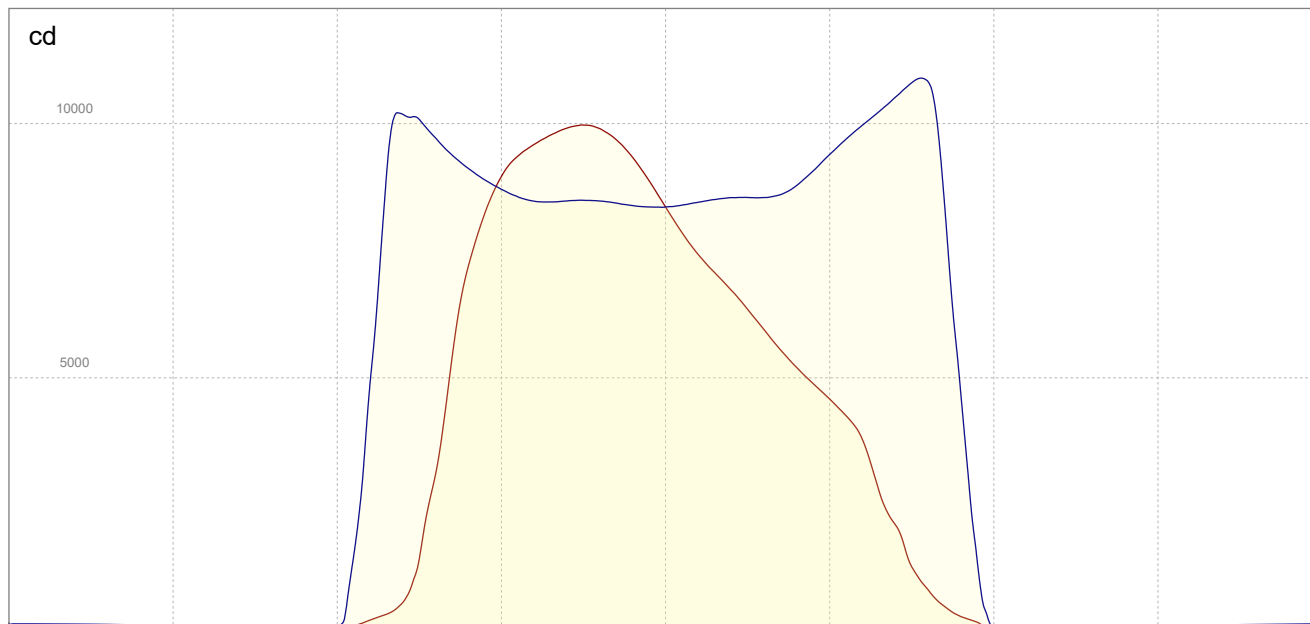
Iso-illuminance Diagram (Iso-lux)



50.0 %	499.8 lx
30.0 %	299.9 lx
10.0 %	100.0 lx
5.0 %	50.0 lx
3.0 %	30.0 lx

Peak illuminance: 999.7 lx
 Mounting height: 3.0 m
 Number of c-planes: 24

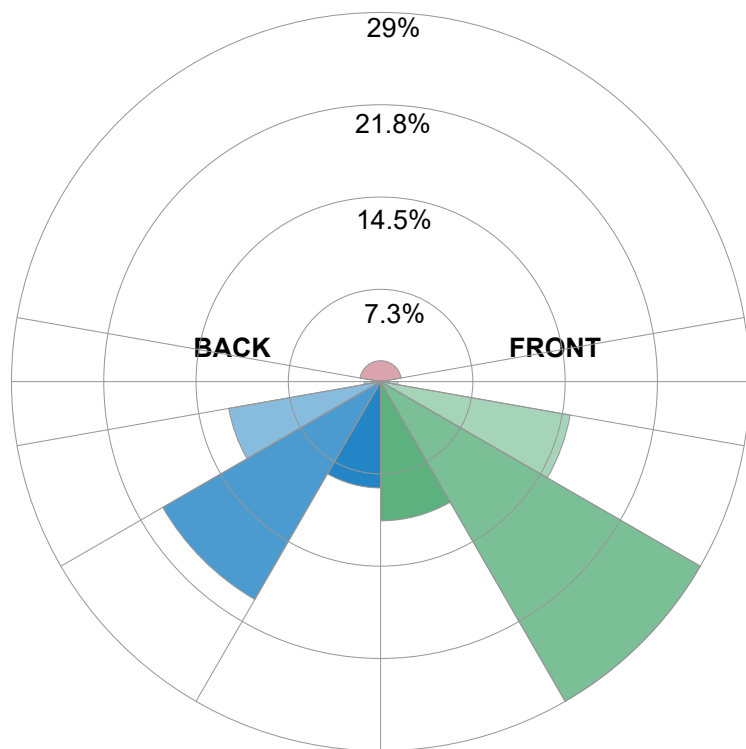
Linear intensity distribution



— C0 - C180
— C90 - C270

IESNA TM-15-07 Luminaire Classification System For Outdoor Luminaires

BUG rating B4 U4 G4



Forward Light

Low (0-30°)	3999.1 lm	10.9%
Medium (30-60°)	10604. lm	29%
High (60-80°)	5529.7 lm	15.1%
Very High	496.8 lm	1.4%

Back Light

Low (0-30°)	3055.3 lm	8.4%
Medium (30-60°)	7225.9 lm	19.8%
High (60-80°)	4430.5 lm	12.1%
Very High	473.3 lm	1.3%

Uplight

Low (90-100°)	103.5 lm	0.3%
High (100-180°)	600.7 lm	1.6%

Total

Sum	36532 lm	100%
-----	----------	------