

## Laboratory and Equipment

Test lab  
Spectrometer Manufacturer and Model  
Measurement date

n/a - serial: n/a sensor serial: n/a  
n/a, n/a – n/a  
8/6/2024

## Measurement Conditions

Tested c-planes  
Tested gamma angles  
Input Power

25 – distance {C\_PLANES\_DIST}°  
181 – {H\_PLANES\_DIST}°  
245.1 W

## Tested Light Source

Luminaire  
Basic Luminous Shape  
Item No.  
Manufacturer

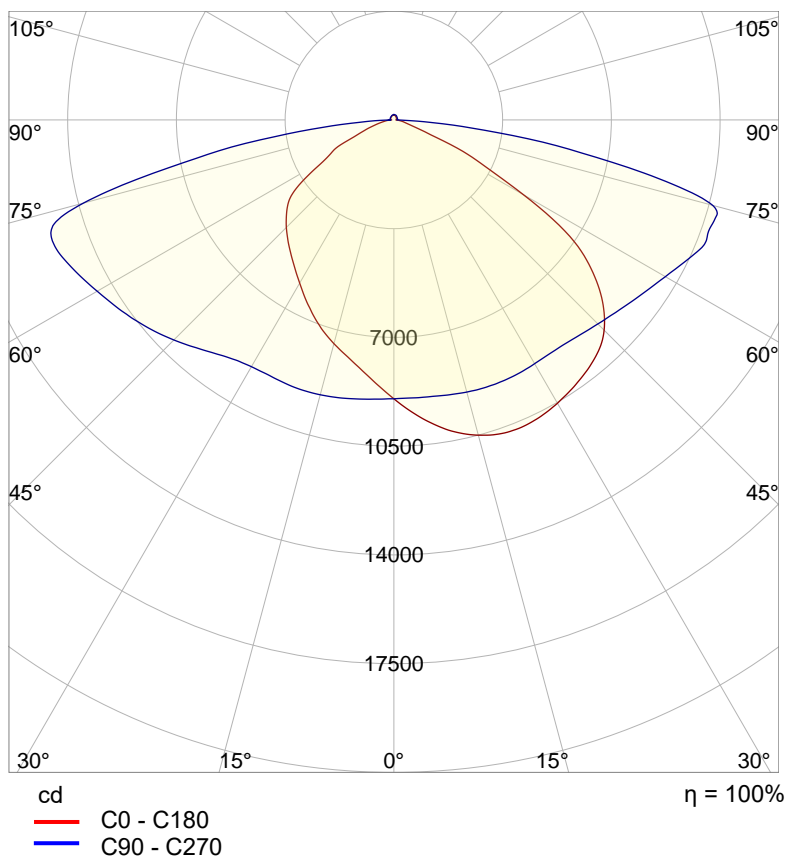
Tundra Area Light - TND-PL-SB300-01  
PANEL  
Grizzly Lighting Systems

## Main Light Measurement Results

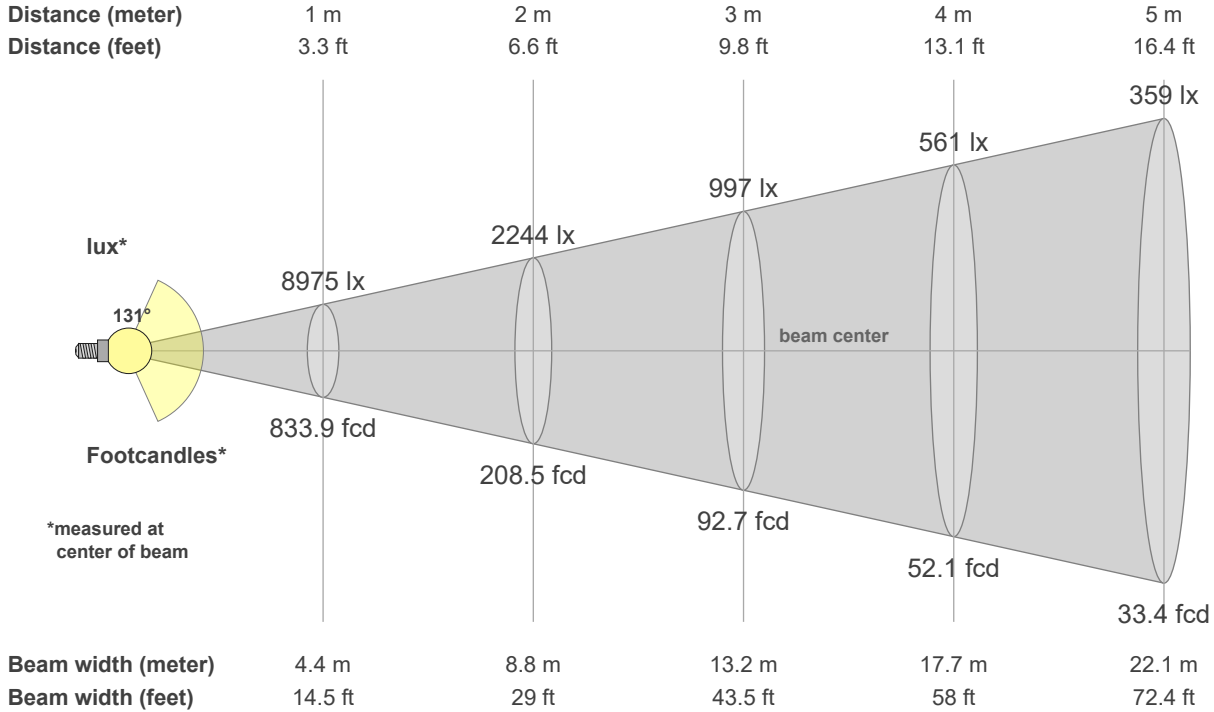
Output – Total Lumen (Up% / Down%)  
Efficiency  
Peak Intensity  
Correlated Color Temperature, CCT  
Color Rendering Index

38986 lm – 1.95% / 98.05%  
159 lm/W  
11946 cd  
4000 K  
CRI 70.0

## Polar light distribution diagram

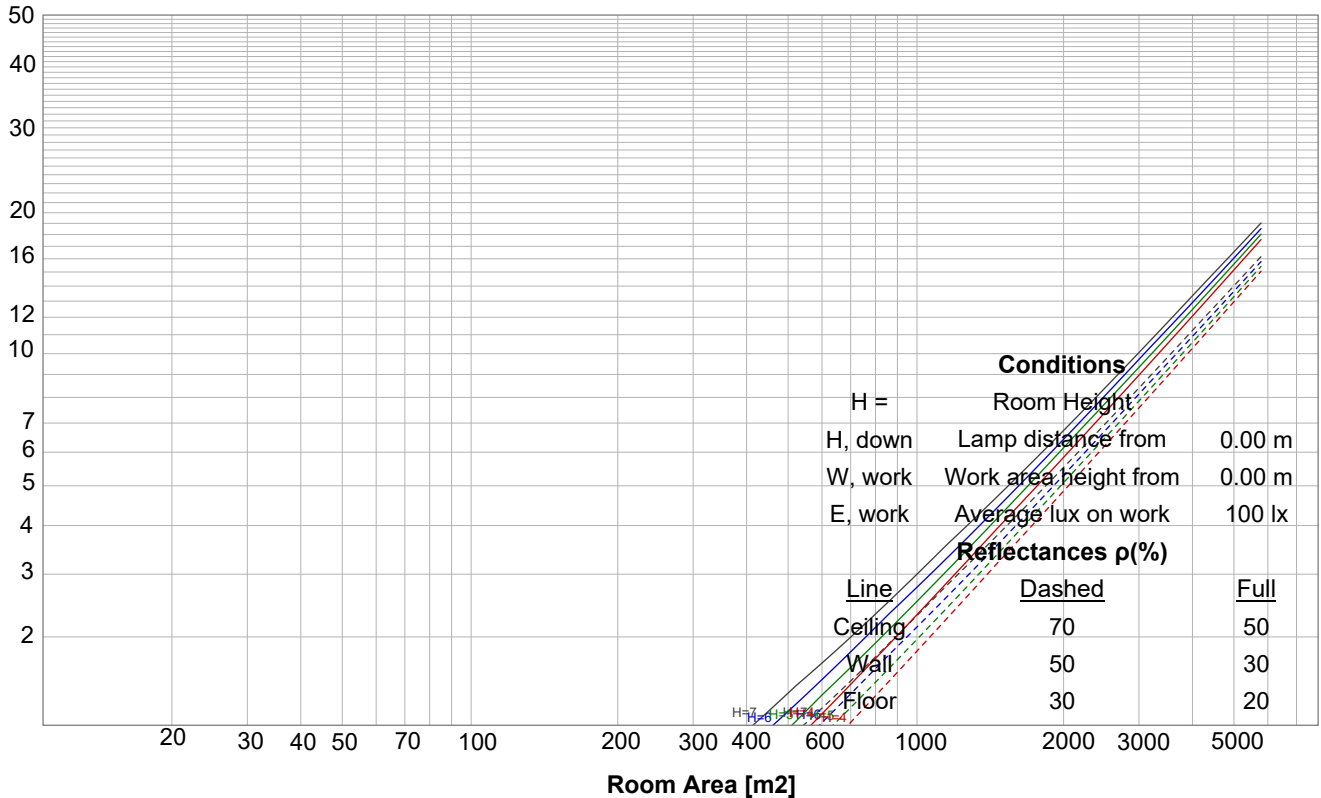


## Beam details

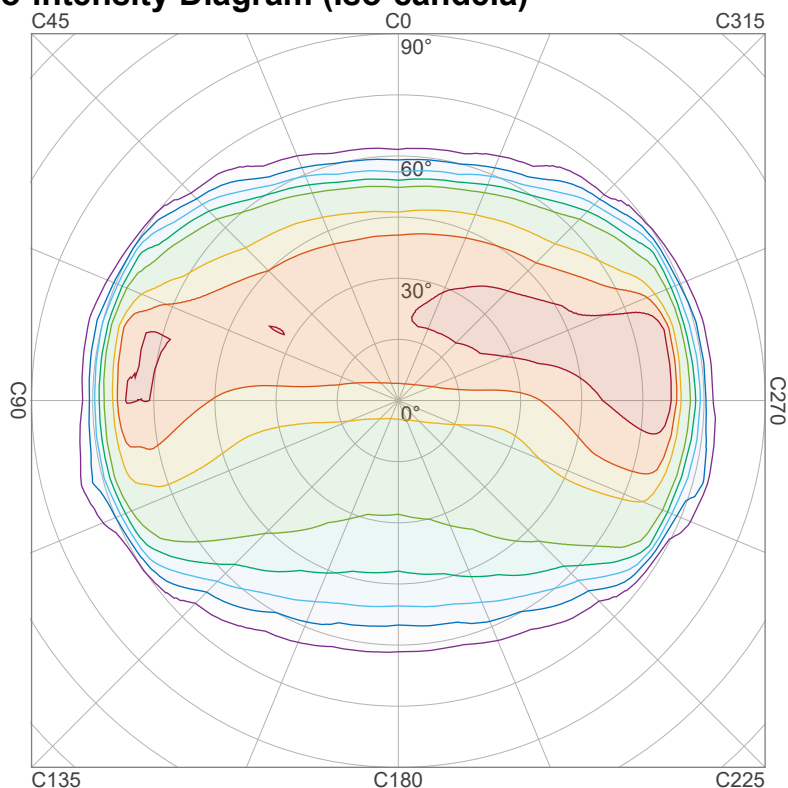


## Luminaire budgetary diagram

LAMPS (number of lamps)



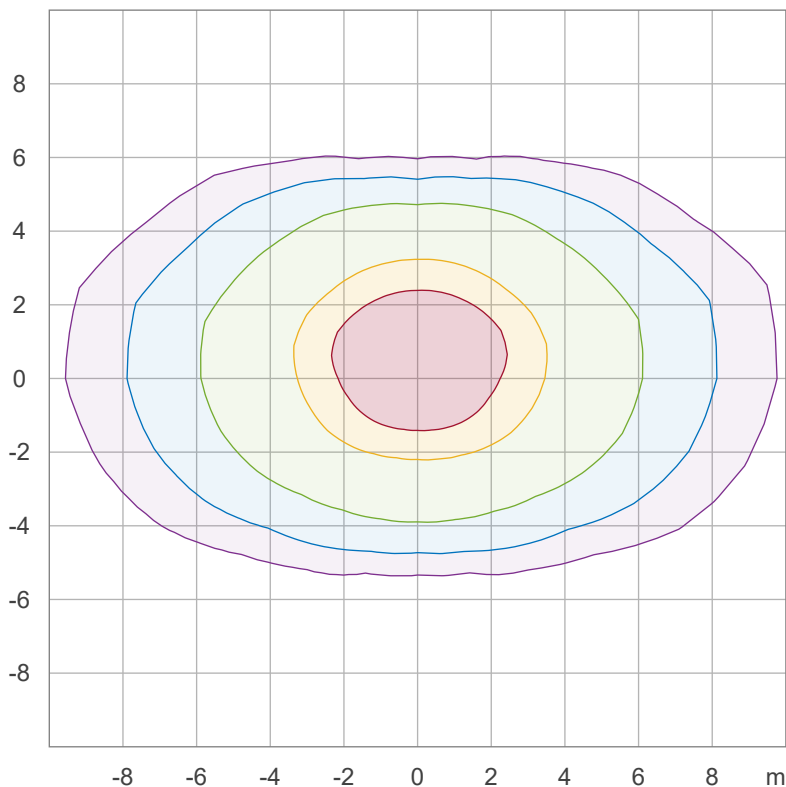
## Iso-intensity Diagram (Iso-candela)



90 %	10751.4 cd
80 %	9556.8 cd
70 %	8362.2 cd
60 %	7167.6 cd
50 %	5973.0 cd
40 %	4778.4 cd
30 %	3583.8 cd
20 %	2389.2 cd
10 %	1194.6 cd

Peak intensity: 11946.0 cd  
 Number of c-planes: 24

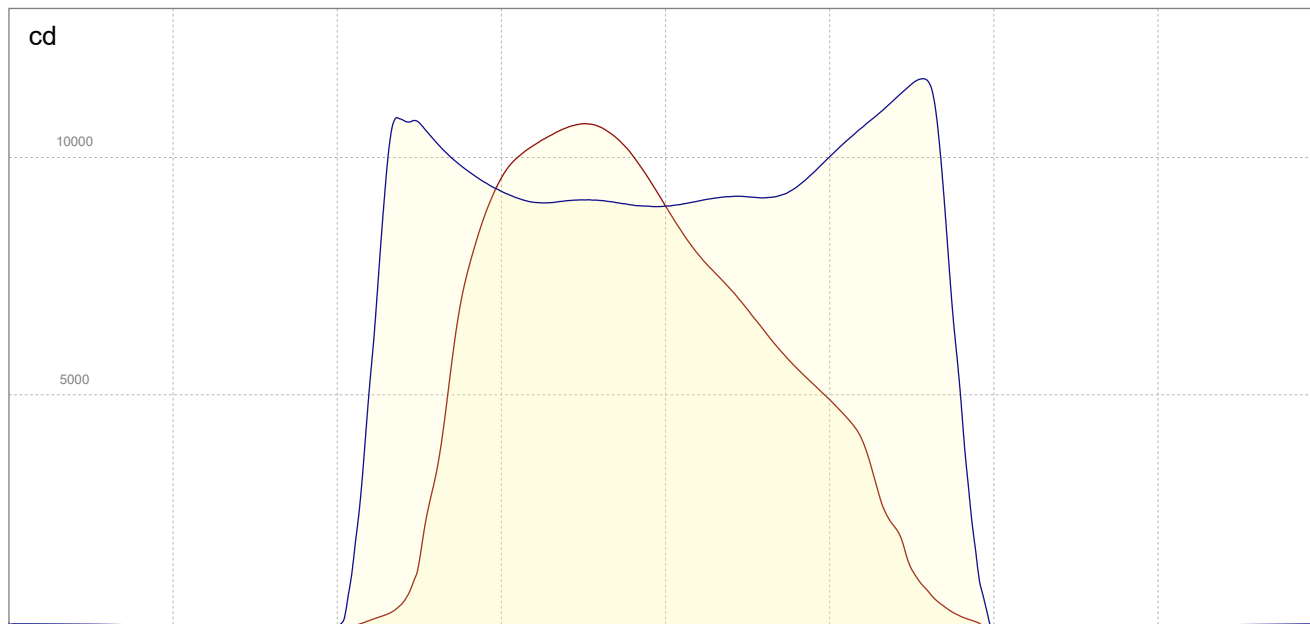
## Iso-illuminance Diagram (Iso-lux)



50.0 %	538.0 lx
30.0 %	322.8 lx
10.0 %	107.6 lx
5.0 %	53.8 lx
3.0 %	32.3 lx

Peak illuminance: 1076.1 lx  
 Mounting height: 3.0 m  
 Number of c-planes: 24

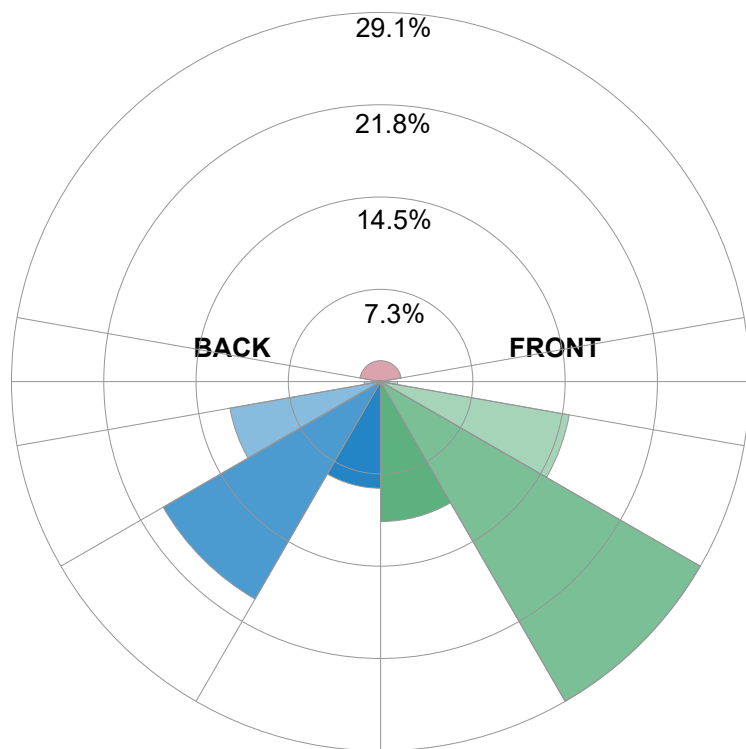
## Linear intensity distribution



— C0 - C180  
— C90 - C270

## IESNA TM-15-07 Luminaire Classification System For Outdoor Luminaires

BUG rating B4 U4 G4



### Forward Light

Low (0-30°)	4295	lm	11%
Medium (30-60°)	11332	lm	29.1%
High (60-80°)	5879.6	lm	15.1%
Very High	524	lm	1.3%

### Back Light

Low (0-30°)	3273.1	lm	8.4%
Medium (30-60°)	7708.7	lm	19.8%
High (60-80°)	4697	lm	12%
Very High	504.8	lm	1.3%

### Uplight

Low (90-100°)	115.5	lm	0.3%
High (100-180°)	642.5	lm	1.6%

### Total

Sum	38986	lm	100%
-----	-------	----	------