

Laboratory and Equipment

Test lab	n/a - serial: n/a sensor serial: n/a
Spectrometer Manufacturer and Model	n/a, n/a – n/a
Measurement date	8/6/2024

Measurement Conditions

Tested c-planes	25 – distance {C_PLANES_DIST}°
Tested gamma angles	181 – {H_PLANES_DIST}°
Input Power	260.7 W

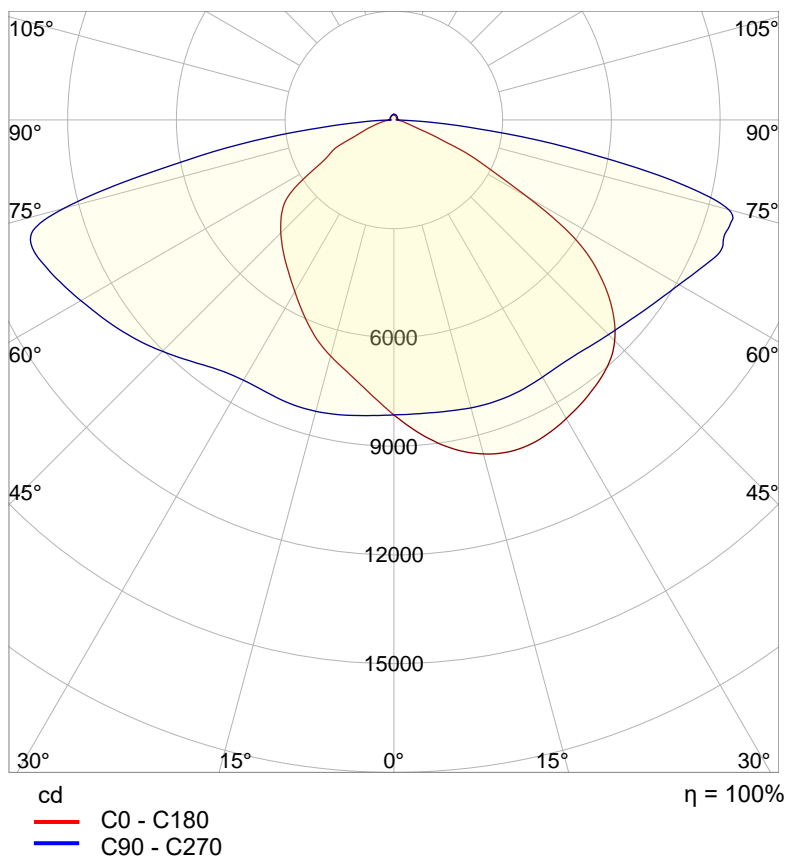
Tested Light Source

Luminaire	Tundra Area Light - TND-PL-SB300-01
Basic Luminous Shape	PANEL
Item No.	
Manufacturer	Grizzly Lighting Systems

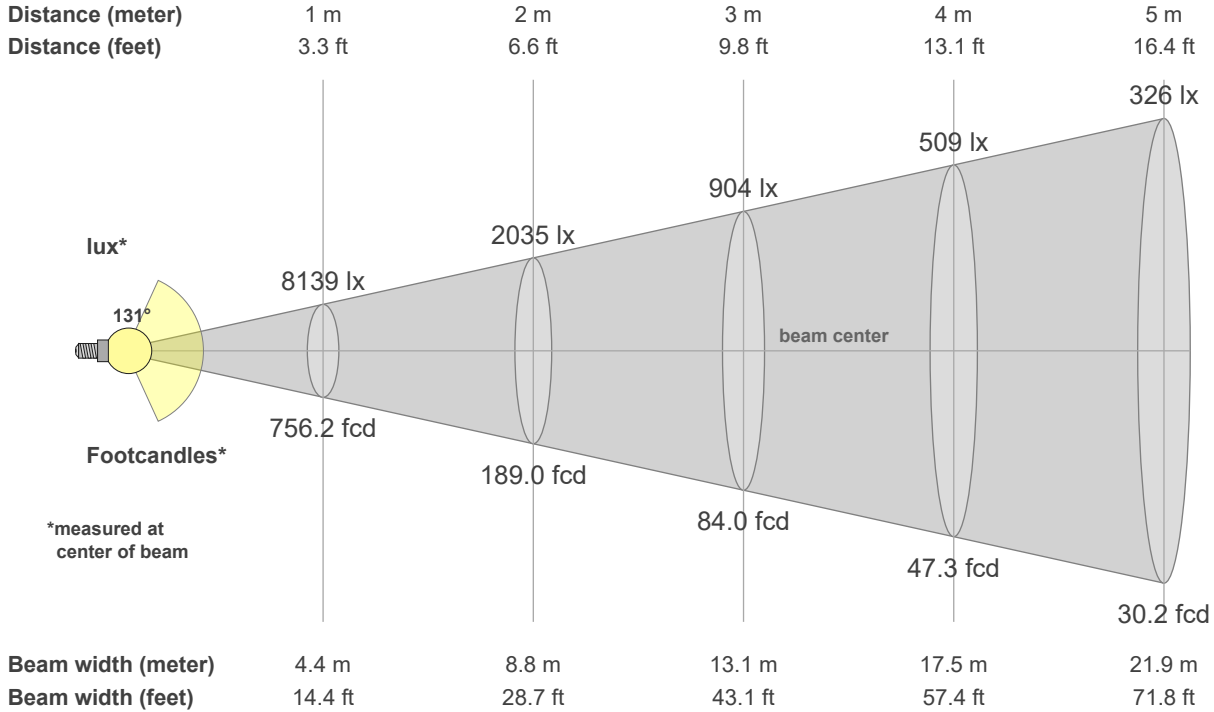
Main Light Measurement Results

Output – Total Lumen (Up% / Down%)	35122 lm – 1.94% / 98.06%
Efficiency	135 lm/W
Peak Intensity	10815 cd
Correlated Color Temperature, CCT	3000 K
Color Rendering Index	CRI 70.0

Polar light distribution diagram

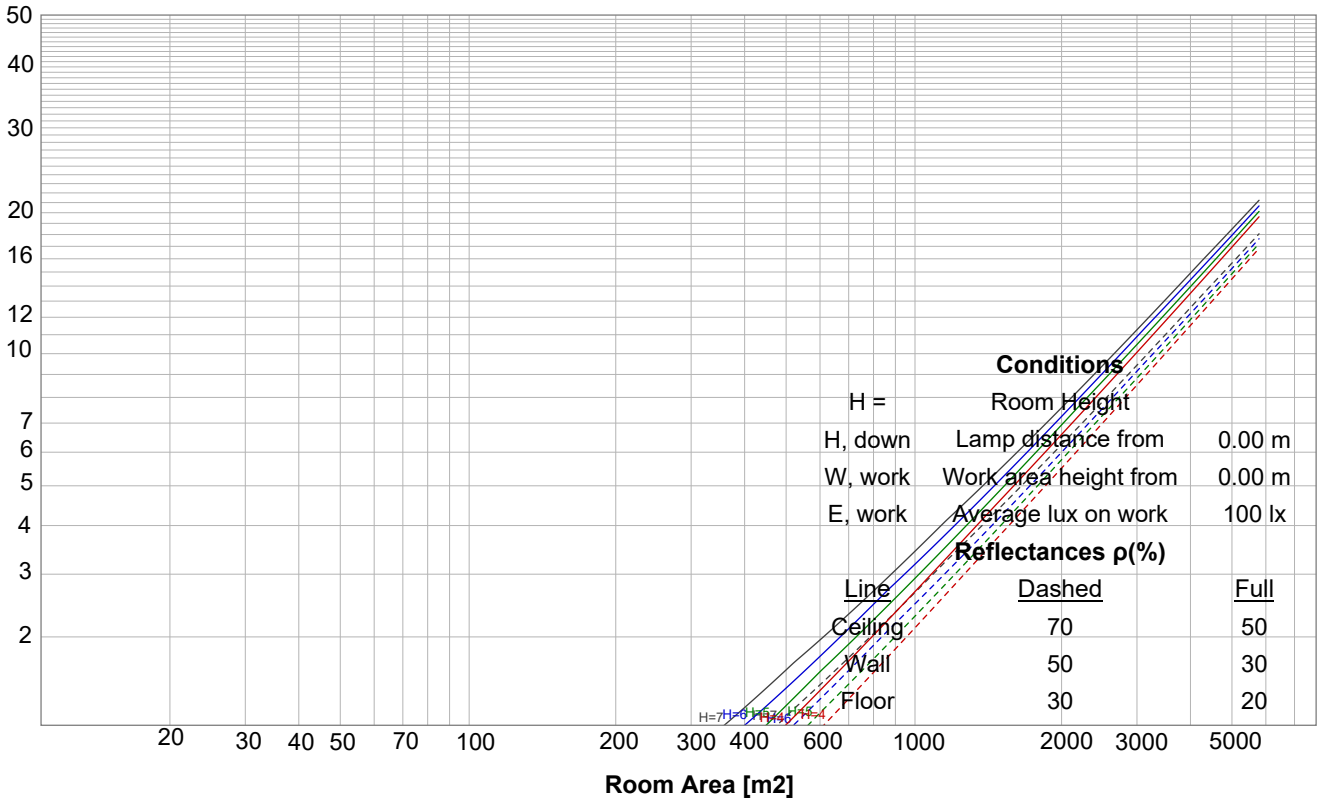


Beam details

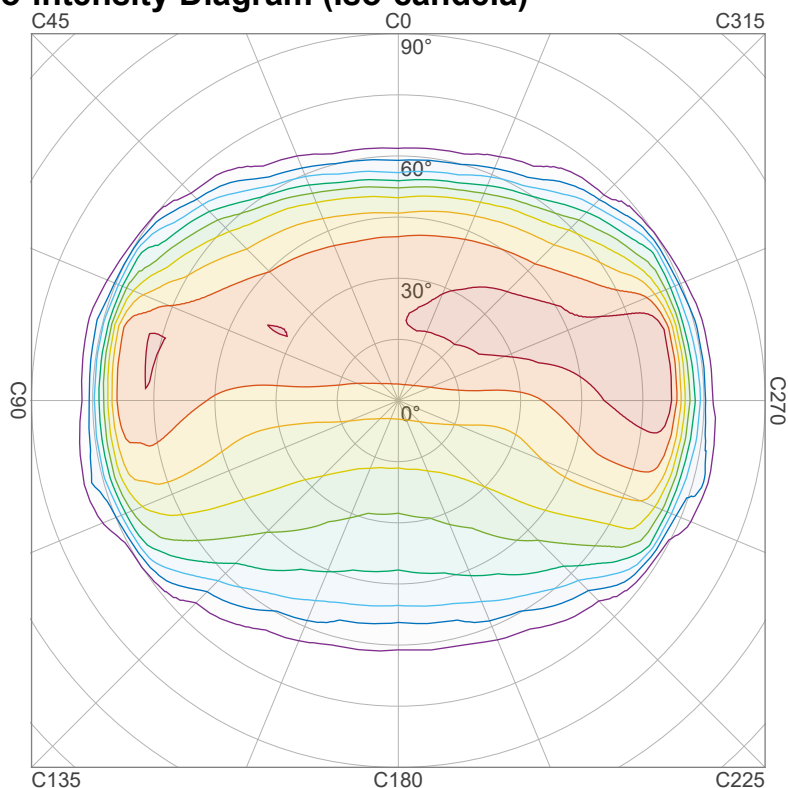


Luminaire budgetary diagram

LAMPS (number of lamps)



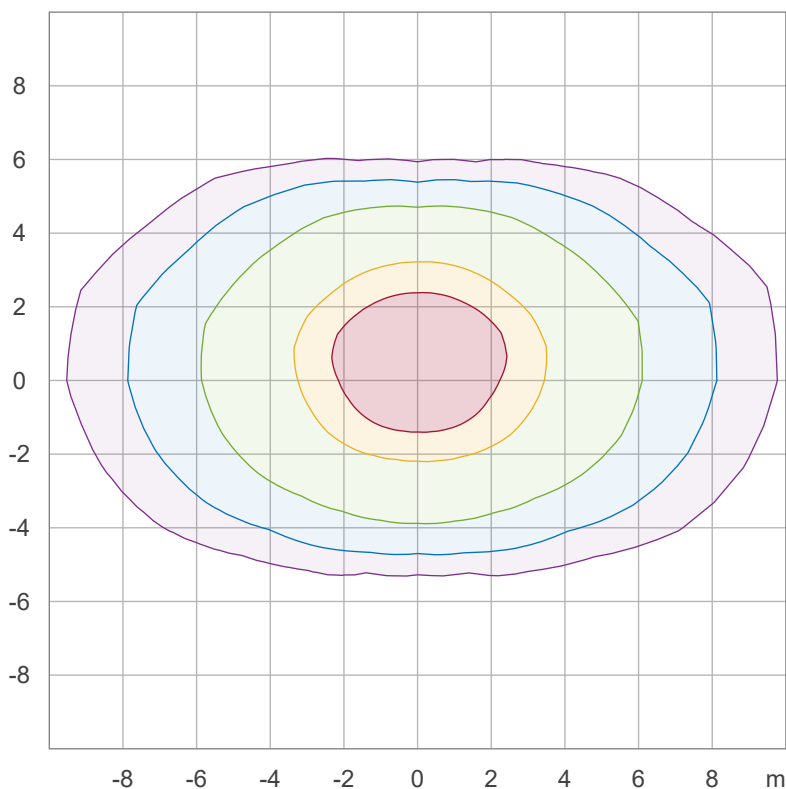
Iso-intensity Diagram (Iso-candela)



90 %	9733.5 cd
80 %	8652.0 cd
70 %	7570.5 cd
60 %	6489.0 cd
50 %	5407.5 cd
40 %	4326.0 cd
30 %	3244.5 cd
20 %	2163.0 cd
10 %	1081.5 cd

Peak intensity: 10815.0 cd
 Number of c-planes: 24

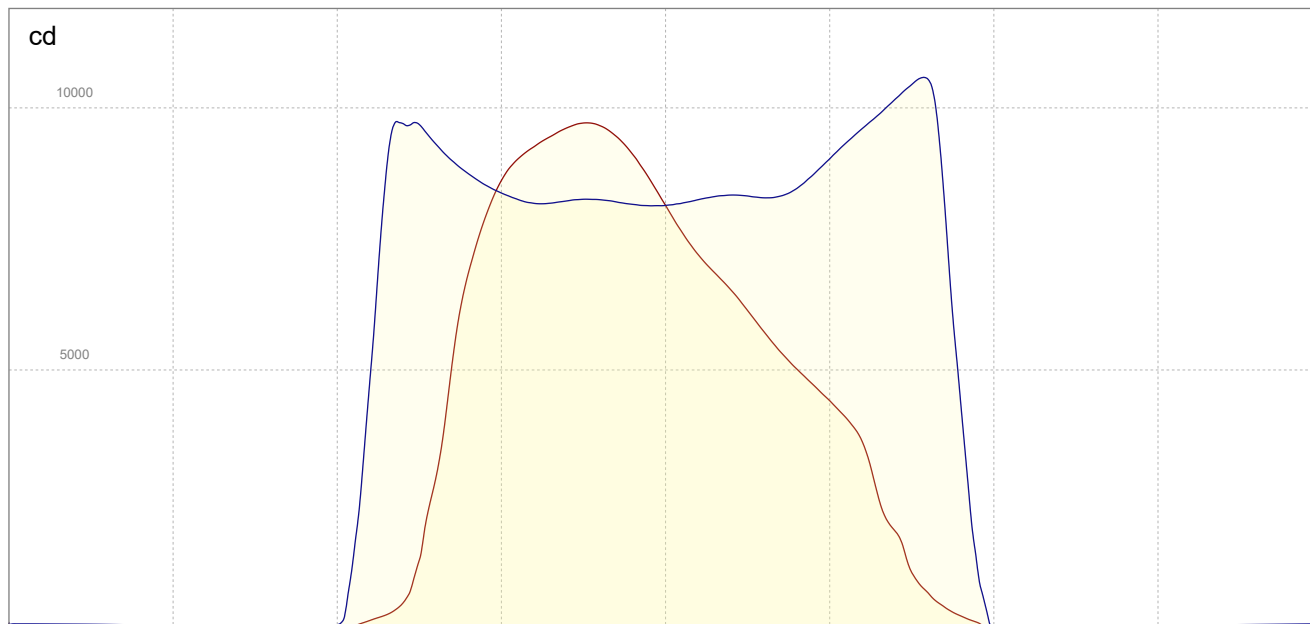
Iso-illuminance Diagram (Iso-lux)



50.0 %	488.1 lx
30.0 %	292.9 lx
10.0 %	97.6 lx
5.0 %	48.8 lx
3.0 %	29.3 lx

Peak illuminance: 976.3 lx
 Mounting height: 3.0 m
 Number of c-planes: 24

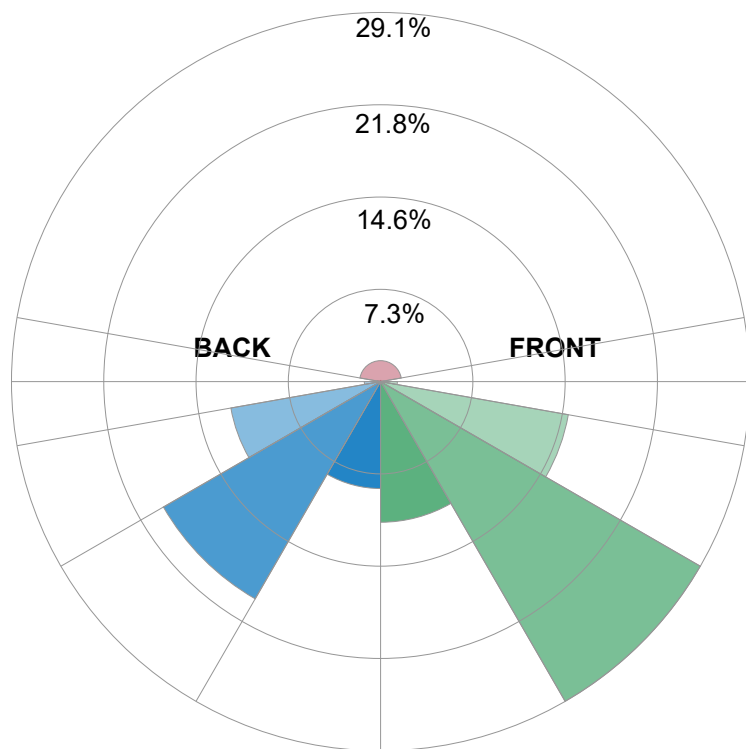
Linear intensity distribution



— C0 - C180
— C90 - C270

IESNA TM-15-07 Luminaire Classification System For Outdoor Luminaires

BUG rating B4 U4 G4



Forward Light

Low (0-30°)	3895.2 lm	11.1%
Medium (30-60°)	10224. lm	29.1%
High (60-80°)	5280 lm	15%
Very High	463.2 lm	1.3%

Back Light

Low (0-30°)	2961.2 lm	8.4%
Medium (30-60°)	6947.1 lm	19.8%
High (60-80°)	4210.6 lm	12%
Very High	451.3 lm	1.3%

Uplight

Low (90-100°)	99.6 lm	0.3%
High (100-180°)	580.5 lm	1.7%

Total

Sum	35122 lm	100%
-----	----------	------