

## Laboratory and Equipment

Test lab  
Spectrometer Manufacturer and Model  
Measurement date

n/a - serial: n/a sensor serial: n/a  
n/a, n/a – n/a  
8/6/2024

## Measurement Conditions

Tested c-planes  
Tested gamma angles  
Input Power

25 – distance {C\_PLANES\_DIST}°  
181 – {H\_PLANES\_DIST}°  
194.7 W

## Tested Light Source

Luminaire  
Basic Luminous Shape  
Item No.  
Manufacturer

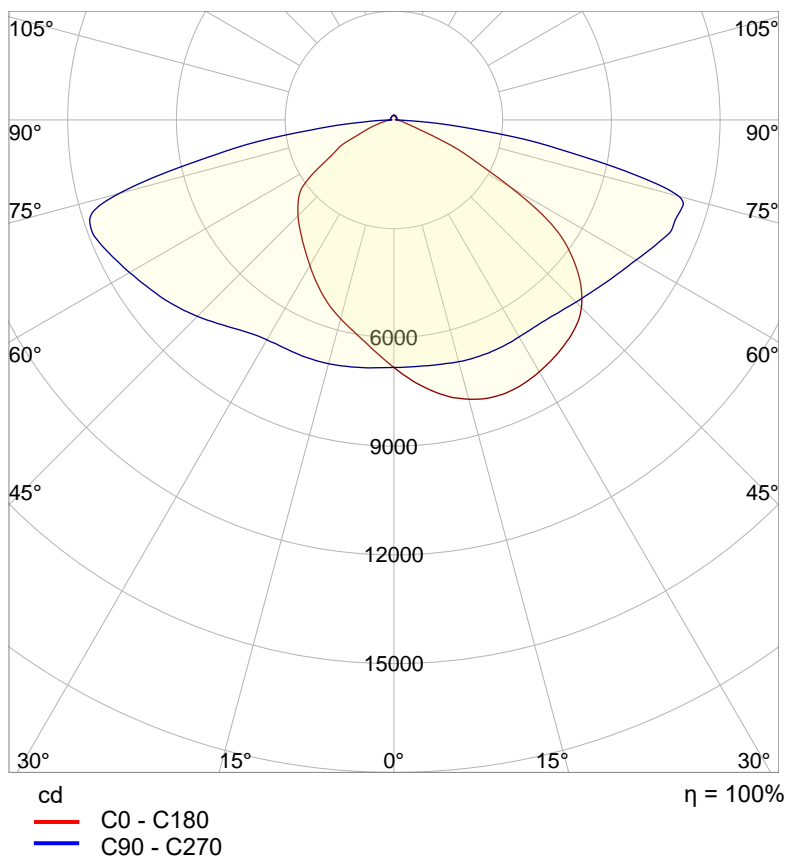
Tundra Area Light - TND-PL-SB300-01  
PANEL  
Grizzly Lighting Systems

## Main Light Measurement Results

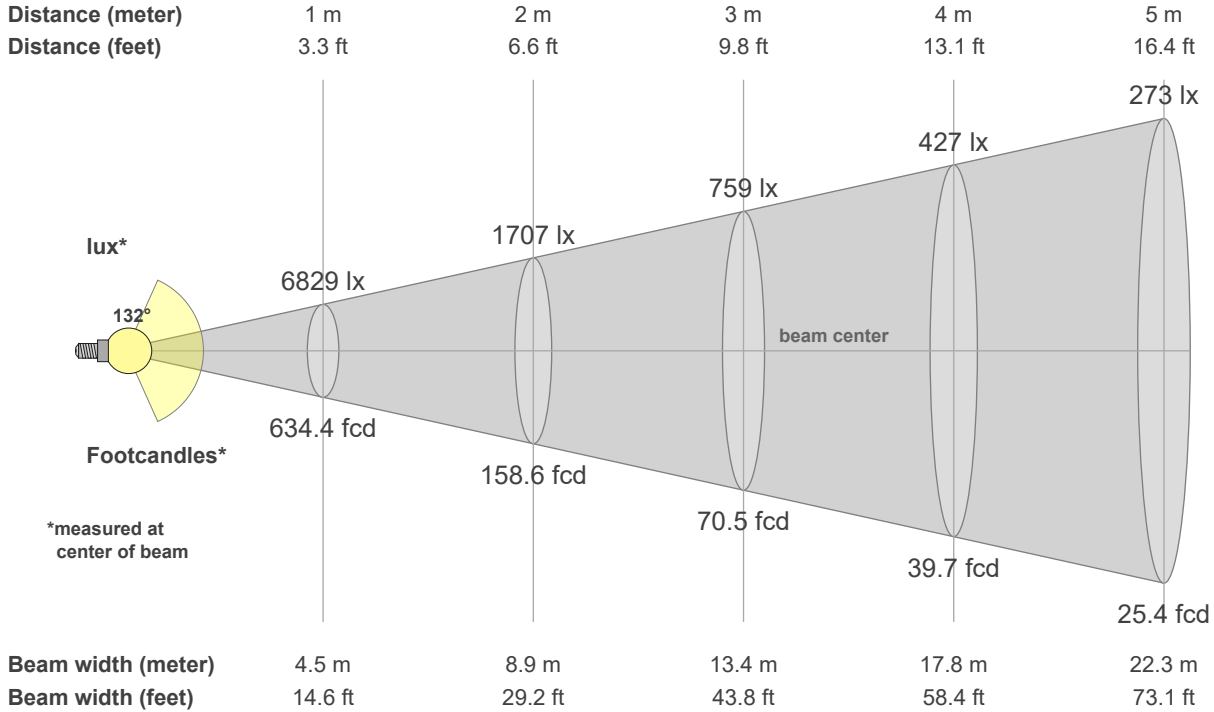
Output – Total Lumen (Up% / Down%)  
Efficiency  
Peak Intensity  
Correlated Color Temperature, CCT  
Color Rendering Index

29820 lm – 1.93% / 98.07%  
153 lm/W  
9090 cd  
5000 K  
CRI 70.0

## Polar light distribution diagram

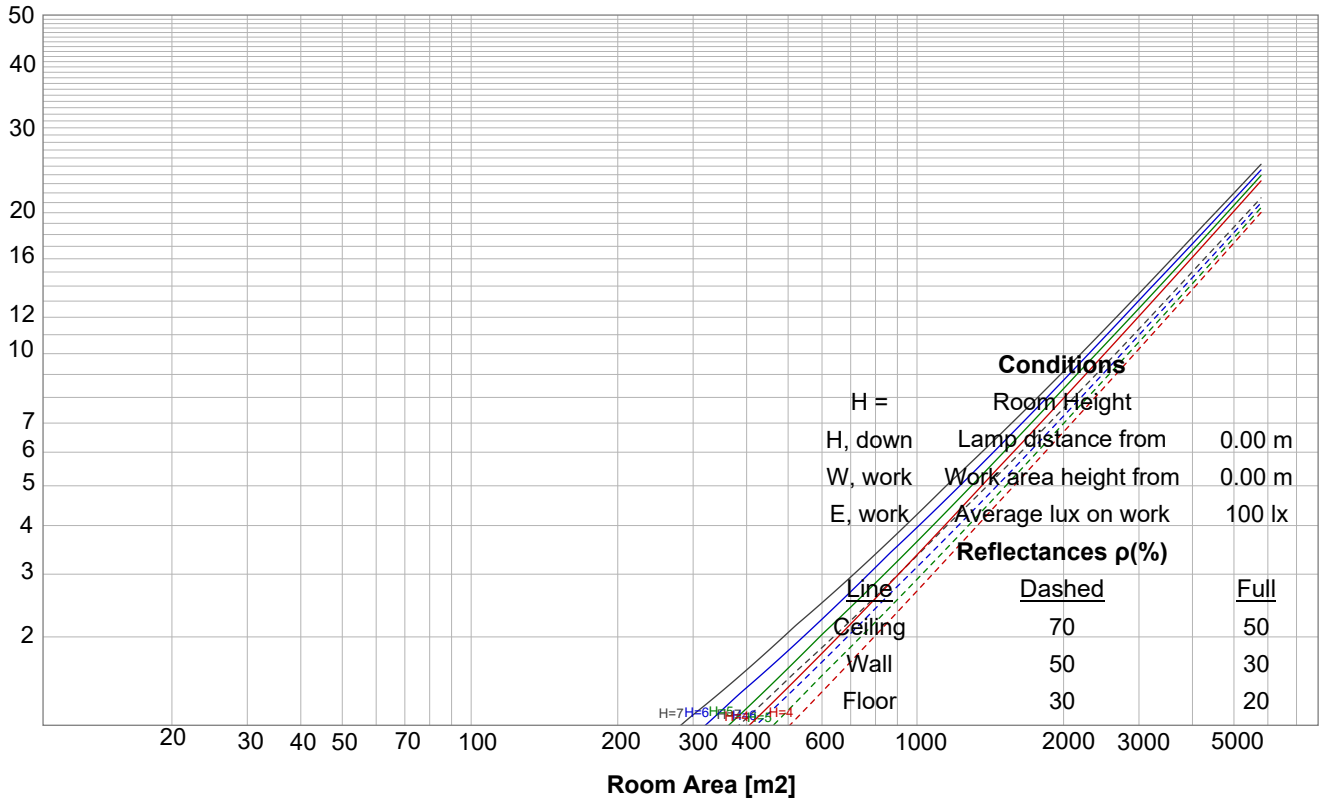


## Beam details

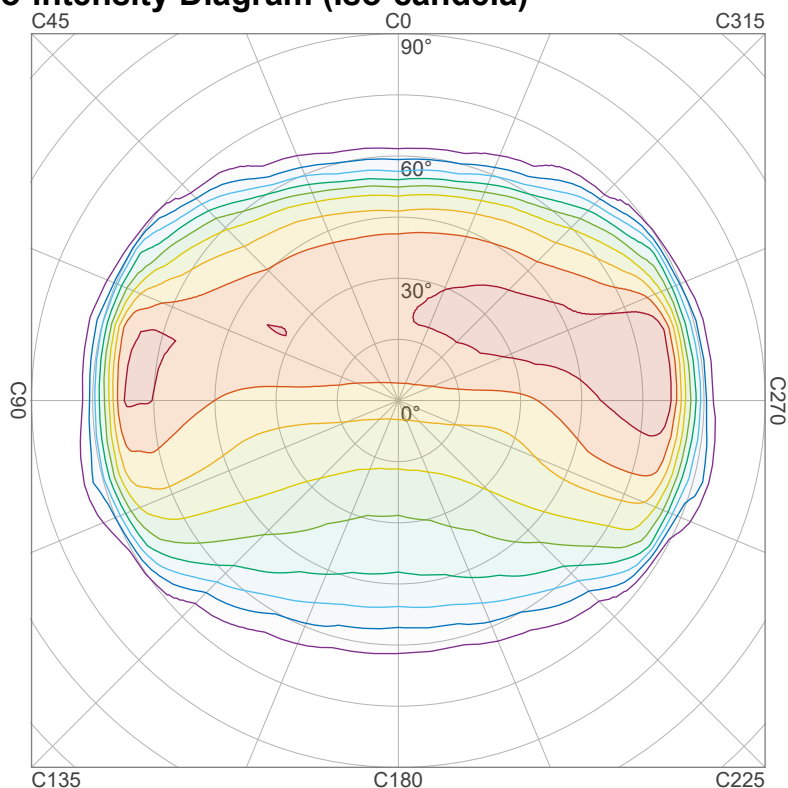


## Luminaire budgetary diagram

LAMPS (number of lamps)



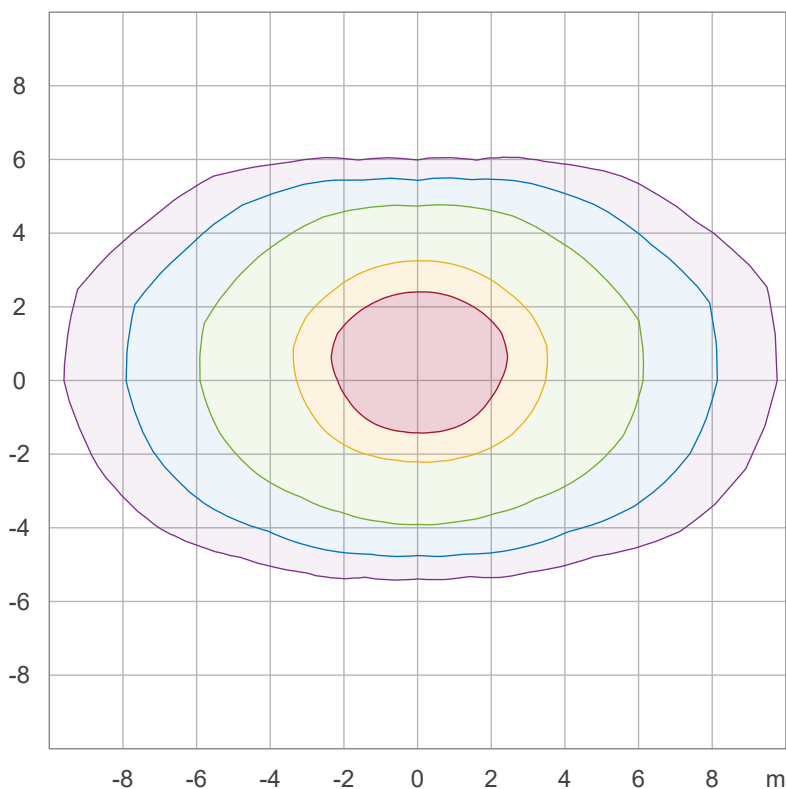
## Iso-intensity Diagram (Iso-candela)



90 %	8181.2 cd
80 %	7272.2 cd
70 %	6363.1 cd
60 %	5454.1 cd
50 %	4545.1 cd
40 %	3636.1 cd
30 %	2727.1 cd
20 %	1818.0 cd
10 %	909.0 cd

Peak intensity: 9090.2 cd  
 Number of c-planes: 24

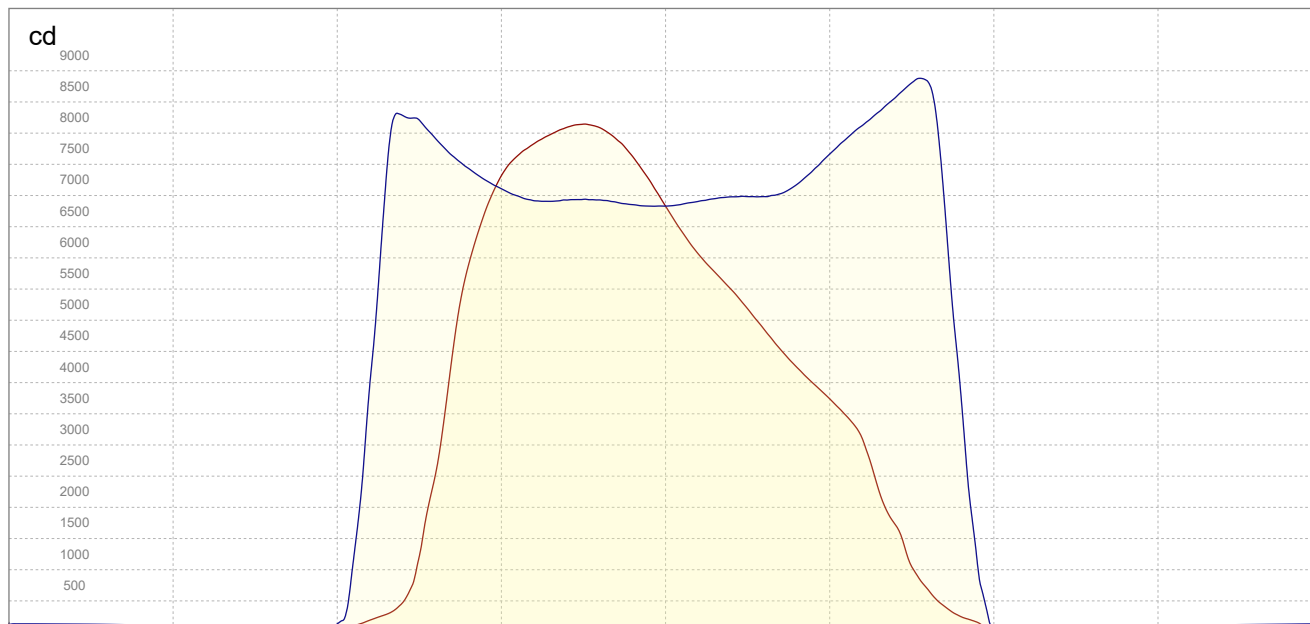
## Iso-illuminance Diagram (Iso-lux)



50.0 %	408.2 lx
30.0 %	244.9 lx
10.0 %	81.6 lx
5.0 %	40.8 lx
3.0 %	24.5 lx

Peak illuminance: 816.5 lx  
 Mounting height: 3.0 m  
 Number of c-planes: 24

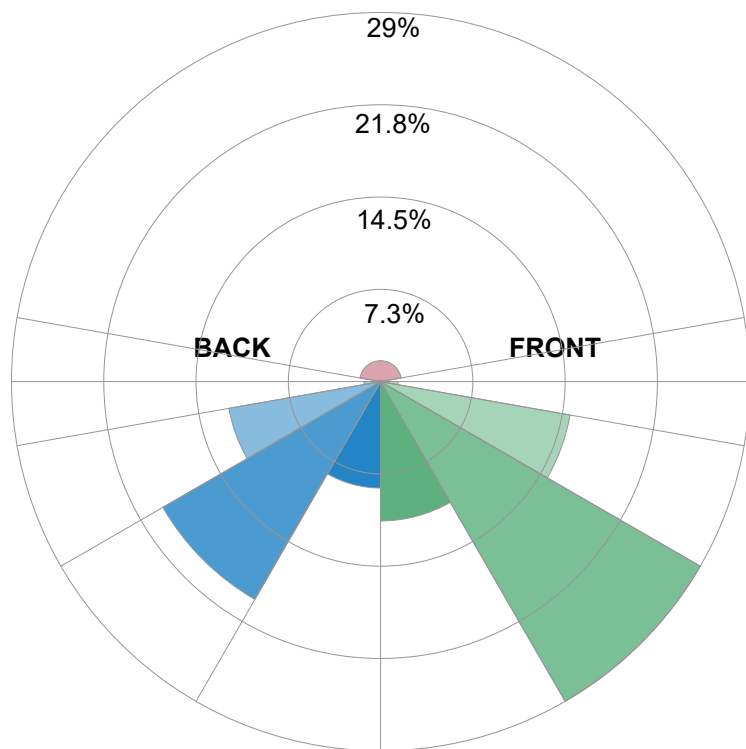
## Linear intensity distribution



— C0 - C180  
— C90 - C270

## IESNA TM-15-07 Luminaire Classification System For Outdoor Luminaires

BUG rating B4 U3 G4



### Forward Light

Low (0-30°)	3266.6 lm	11%
Medium (30-60°)	8656.2 lm	29%
High (60-80°)	4512.4 lm	15.1%
Very High	406.9 lm	1.4%

### Back Light

Low (0-30°)	2495.6 lm	8.4%
Medium (30-60°)	5896.6 lm	19.8%
High (60-80°)	3611.7 lm	12.1%
Very High	388.1 lm	1.3%

### Uplight

Low (90-100°)	84.5 lm	0.3%
High (100-180°)	490.5 lm	1.6%

### Total

Sum	29820 lm	100%
-----	----------	------