

Laboratory and Equipment

Test lab
Spectrometer Manufacturer and Model
Measurement date

n/a - serial: n/a sensor serial: n/a
n/a, n/a – n/a
8/6/2024

Measurement Conditions

Tested c-planes
Tested gamma angles
Input Power

25 – distance {C_PLANES_DIST}°
181 – {H_PLANES_DIST}°
186.9 W

Tested Light Source

Luminaire
Basic Luminous Shape
Item No.
Manufacturer

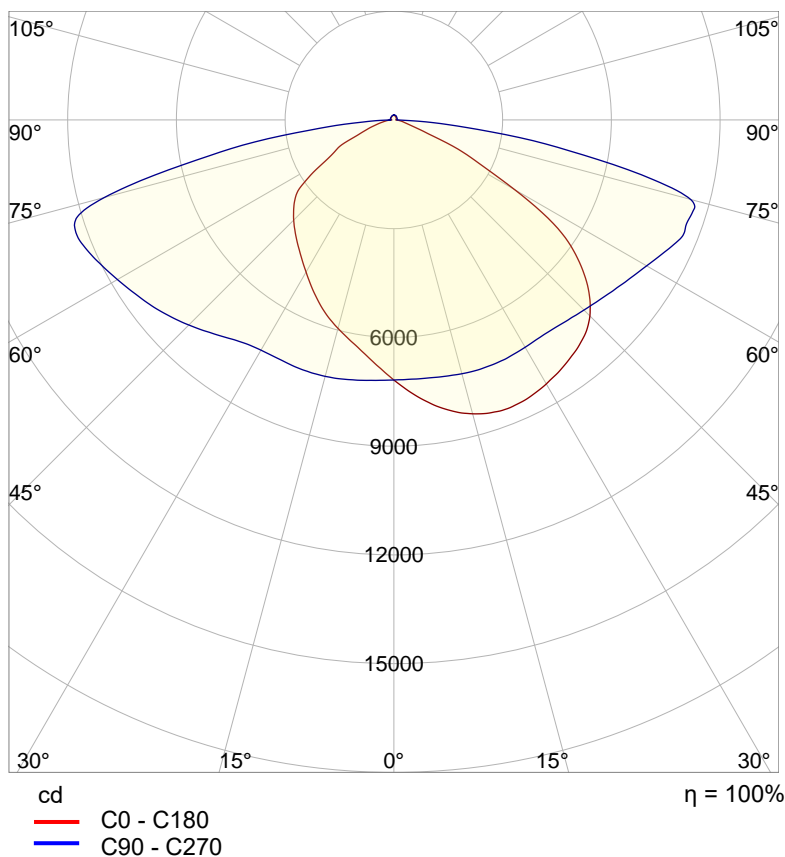
Tundra Area Light - TND-PL-SB300-01
PANEL
Grizzly Lighting Systems

Main Light Measurement Results

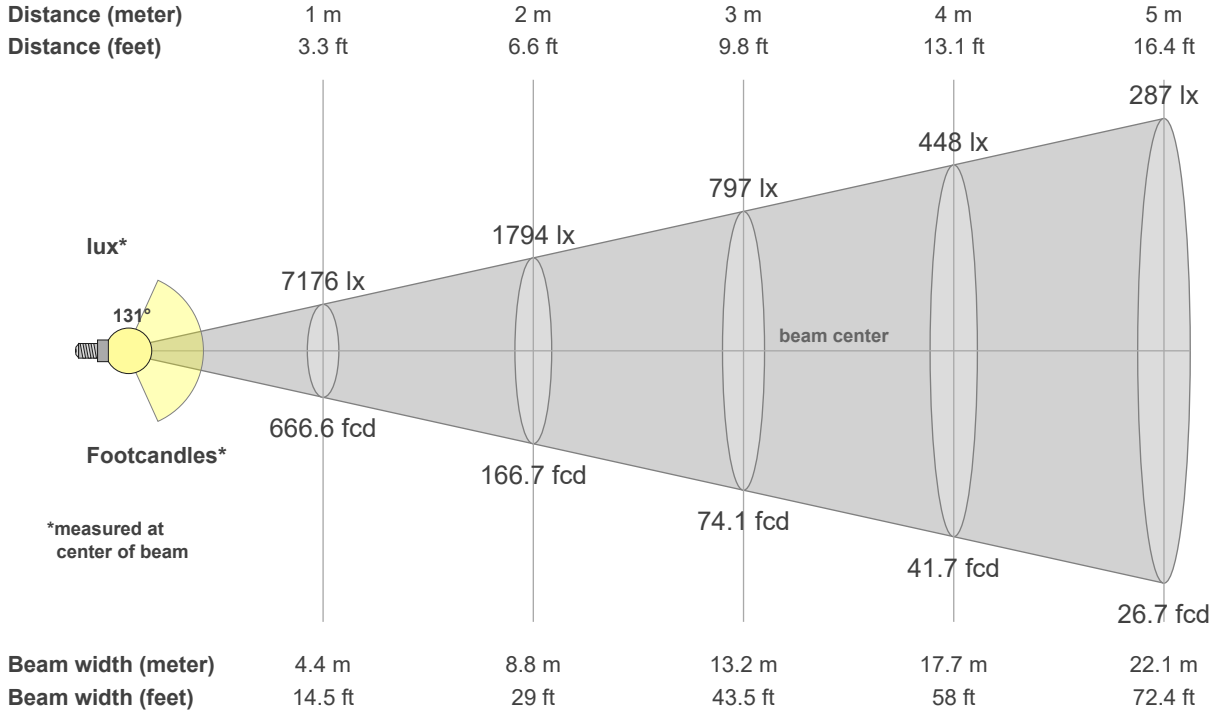
Output – Total Lumen (Up% / Down%)
Efficiency
Peak Intensity
Correlated Color Temperature, CCT
Color Rendering Index

31144 lm – 1.93% / 98.07%
167 lm/W
9548 cd
4000 K
CRI 70.0

Polar light distribution diagram

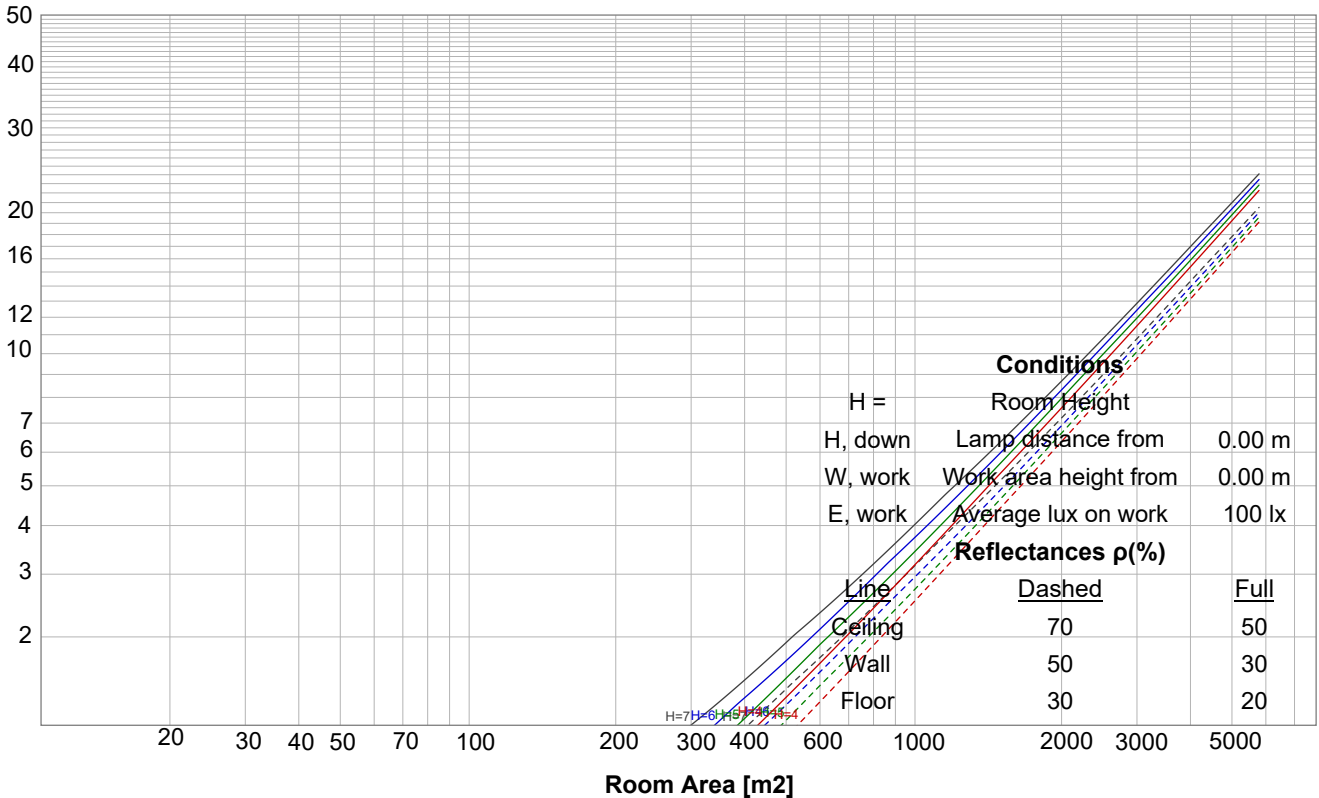


Beam details

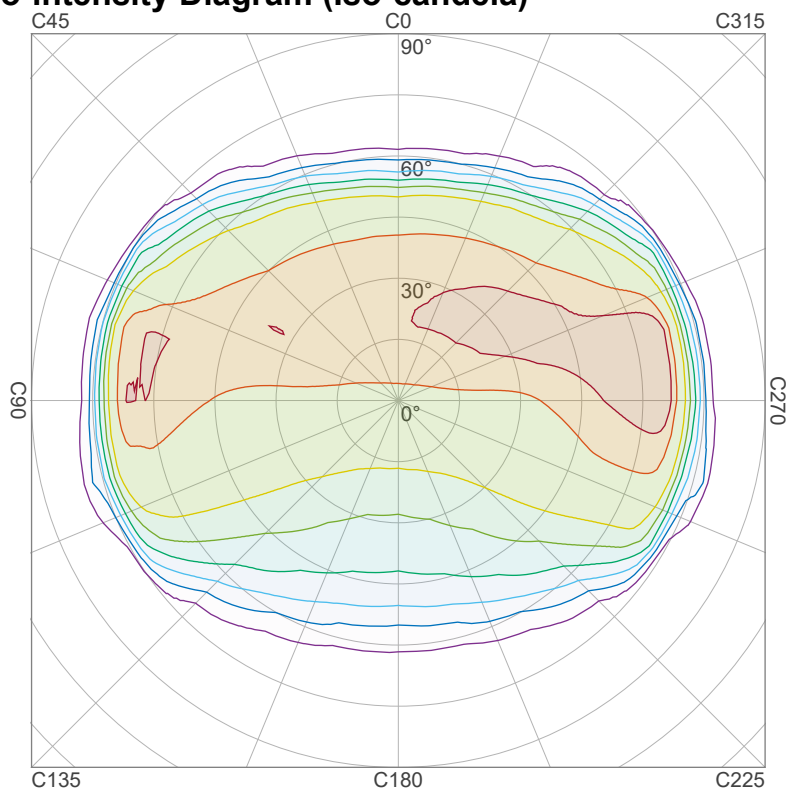


Luminaire budgetary diagram

LAMPS (number of lamps)



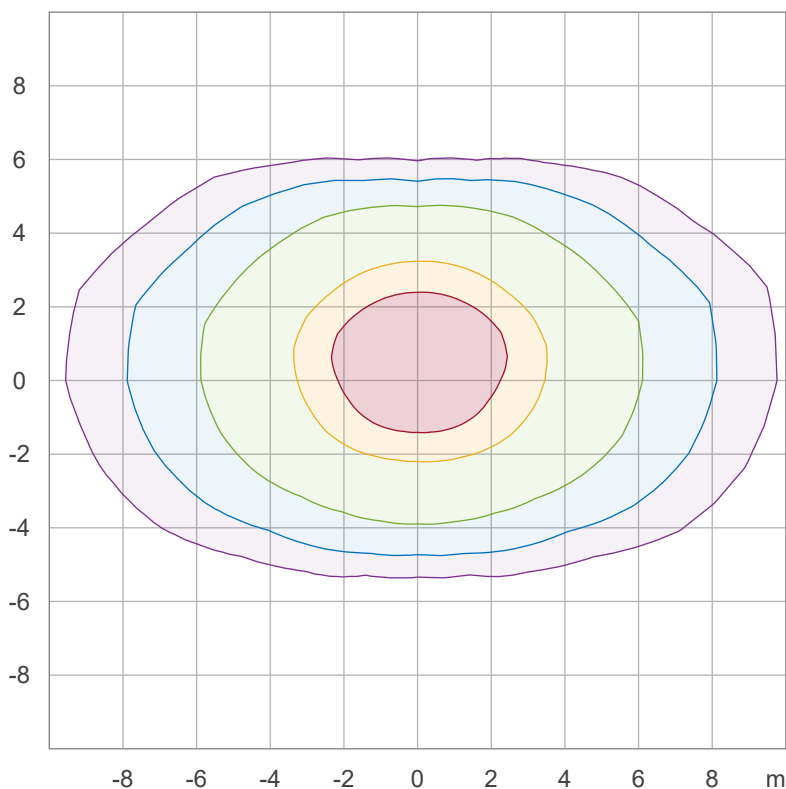
Iso-intensity Diagram (Iso-candela)



90 %	8592.9 cd
80 %	7638.2 cd
70 %	6683.4 cd
60 %	5728.6 cd
50 %	4773.9 cd
40 %	3819.1 cd
30 %	2864.3 cd
20 %	1909.5 cd
10 %	954.8 cd

Peak intensity: 9547.7 cd
 Number of c-planes: 24

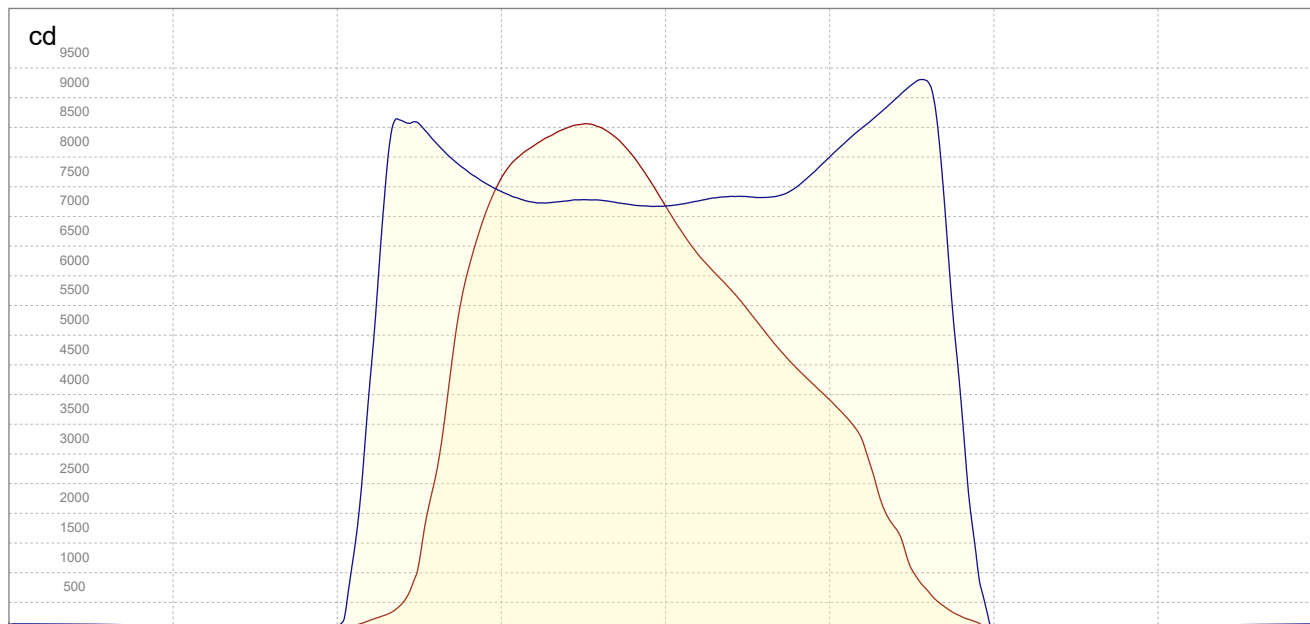
Iso-illuminance Diagram (Iso-lux)



50.0 %	429.6 lx
30.0 %	257.8 lx
10.0 %	85.9 lx
5.0 %	43.0 lx
3.0 %	25.8 lx

Peak illuminance: 859.2 lx
 Mounting height: 3.0 m
 Number of c-planes: 24

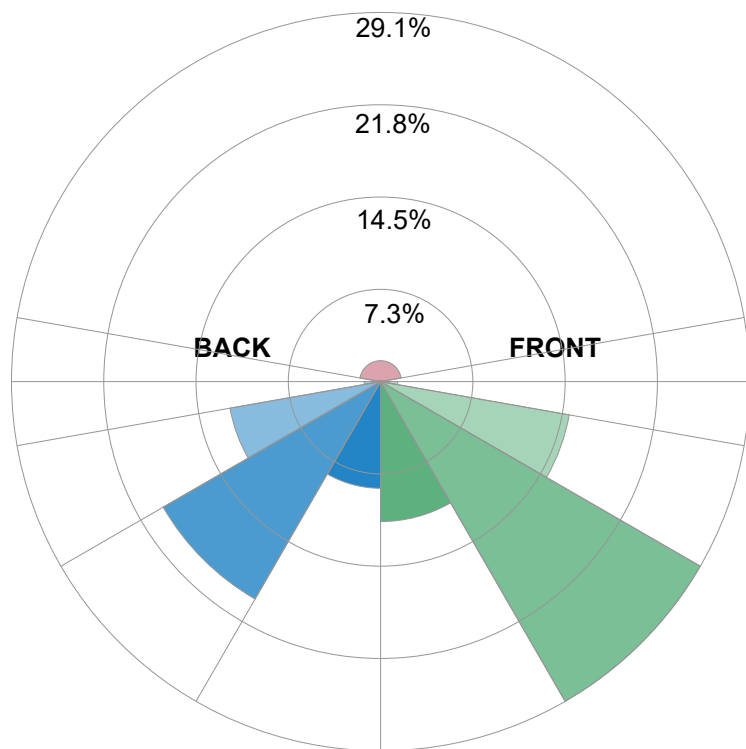
Linear intensity distribution



— C0 - C180
— C90 - C270

IESNA TM-15-07 Luminaire Classification System For Outdoor Luminaires

BUG rating B4 U4 G4



Forward Light

Low (0-30°)	3433	lm	11%
Medium (30-60°)	9054	lm	29.1%
High (60-80°)	4697.6	lm	15.1%
Very High	420.9	lm	1.4%

Back Light

Low (0-30°)	2616.1	lm	8.4%
Medium (30-60°)	6157.6	lm	19.8%
High (60-80°)	3749.9	lm	12%
Very High	402.7	lm	1.3%

Uplight

Low (90-100°)	88.3	lm	0.3%
High (100-180°)	513.5	lm	1.6%

Total

Sum	31144	lm	100%
-----	-------	----	------