

Laboratory and Equipment

Test lab
Spectrometer Manufacturer and Model
Measurement date

n/a - serial: n/a sensor serial: n/a
n/a, n/a – n/a
8/6/2024

Measurement Conditions

Tested c-planes
Tested gamma angles
Input Power

25 – distance {C_PLANES_DIST}°
181 – {H_PLANES_DIST}°
195.9 W

Tested Light Source

Luminaire
Basic Luminous Shape
Item No.
Manufacturer

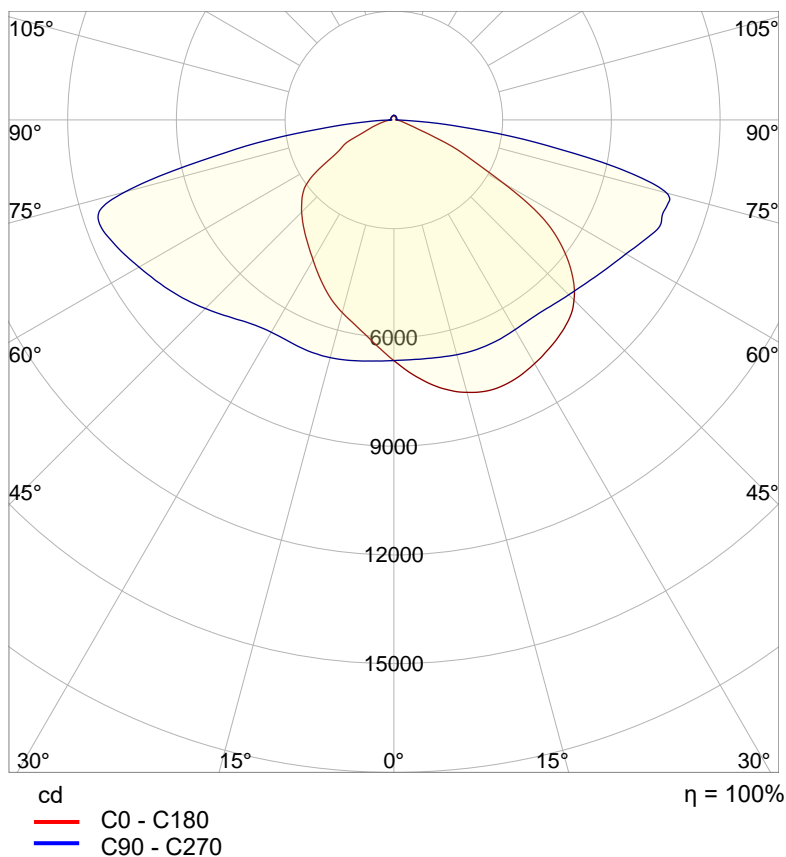
Tundra Area Light - TND-PL-SB300-01
PANEL
Grizzly Lighting Systems

Main Light Measurement Results

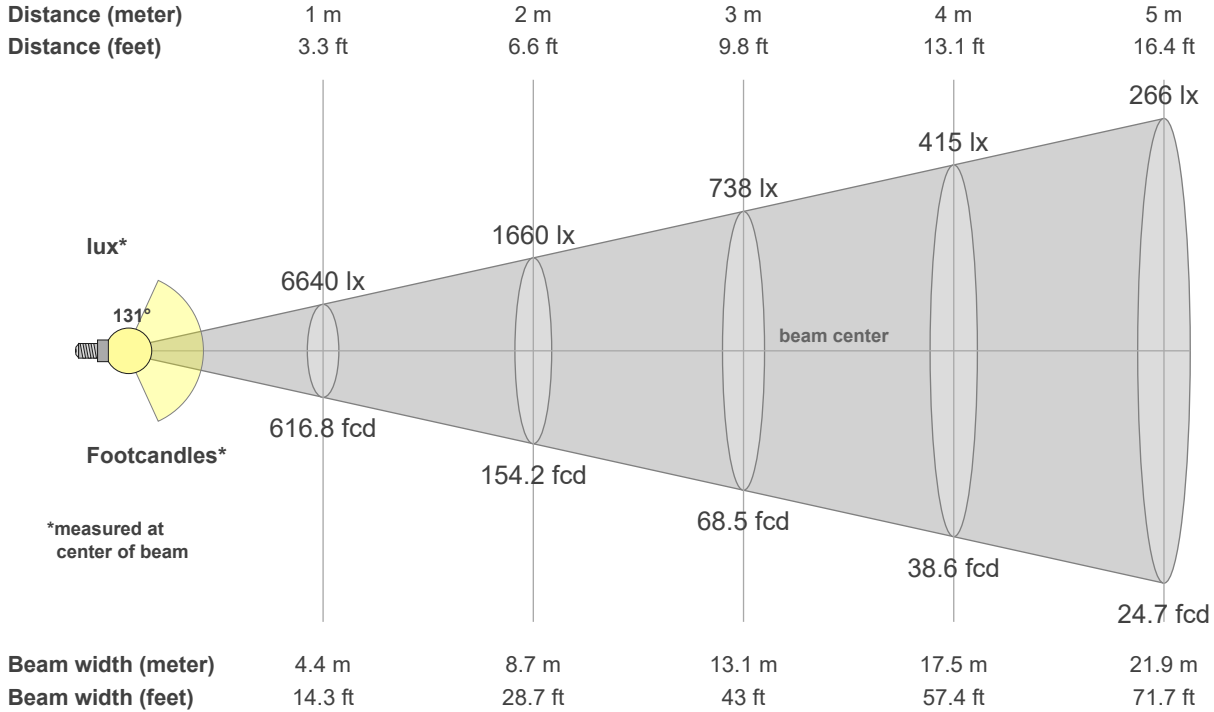
Output – Total Lumen (Up% / Down%)
Efficiency
Peak Intensity
Correlated Color Temperature, CCT
Color Rendering Index

28642 lm – 1.94% / 98.06%
146 lm/W
8822 cd
3000 K
CRI 70.0

Polar light distribution diagram

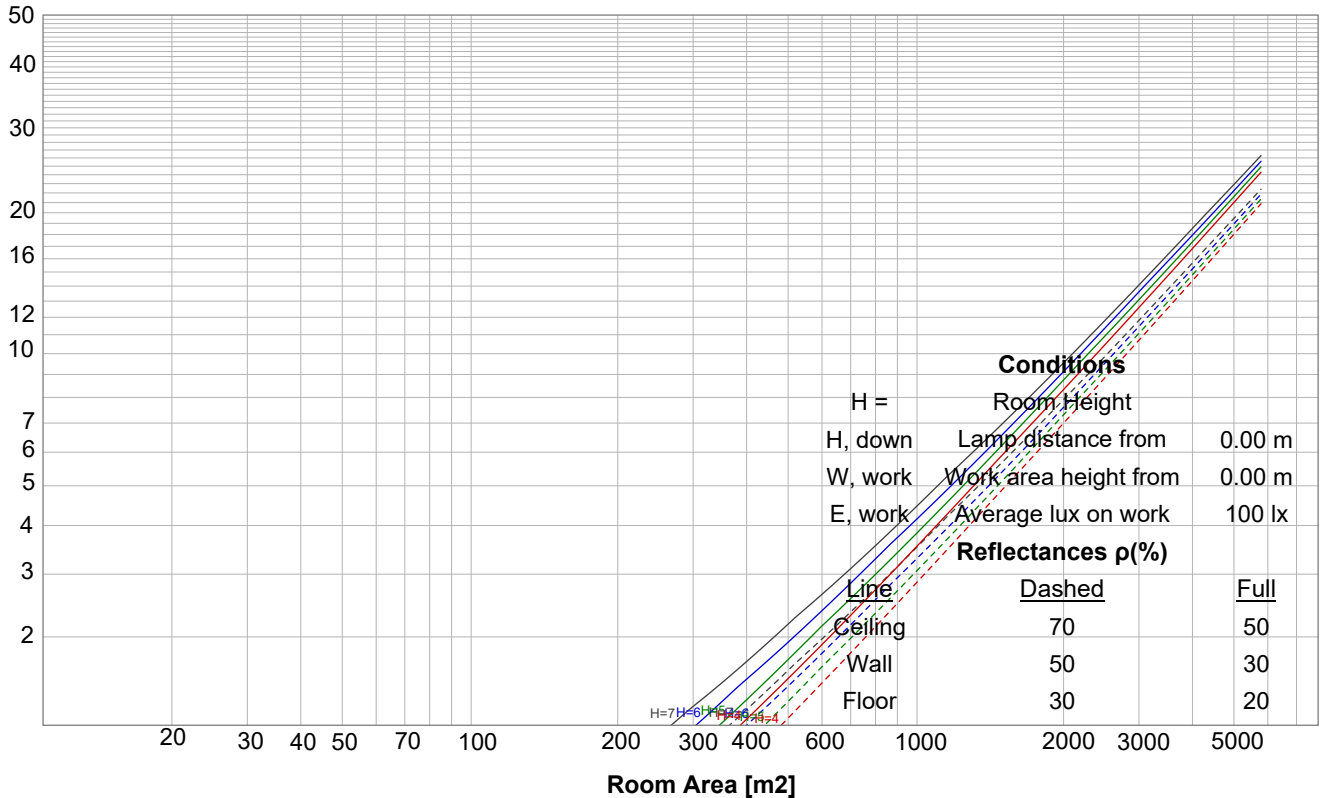


Beam details

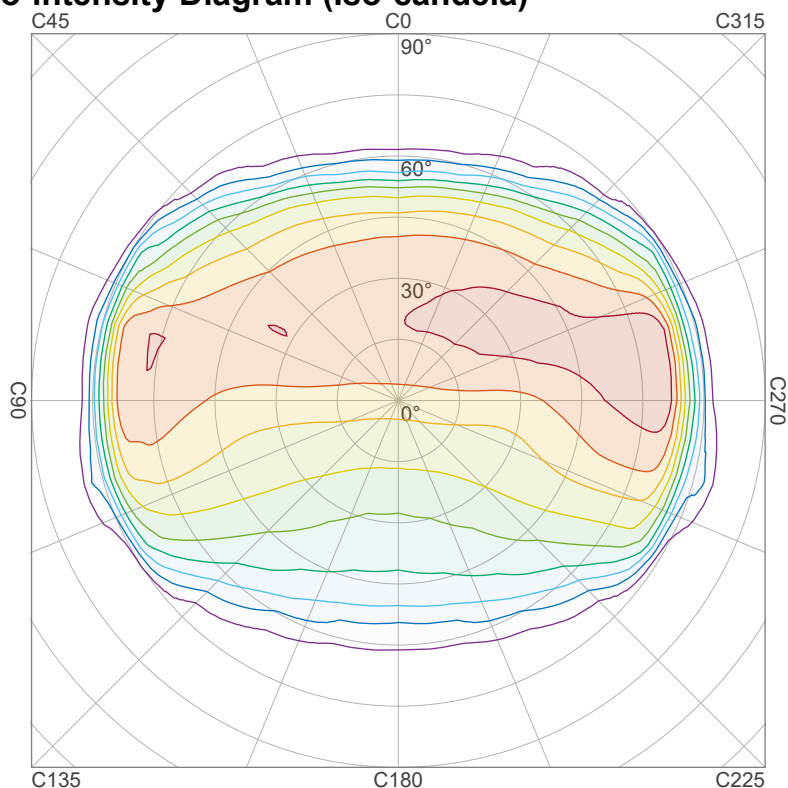


Luminaire budgetary diagram

LAMPS (number of lamps)



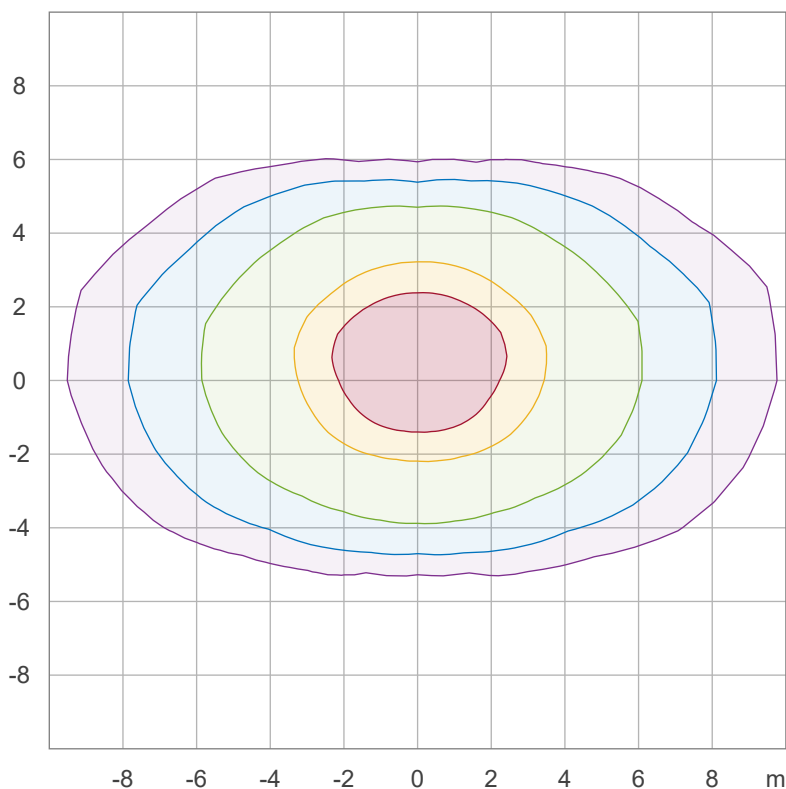
Iso-intensity Diagram (Iso-candela)



90 %	7939.4 cd
80 %	7057.2 cd
70 %	6175.1 cd
60 %	5292.9 cd
50 %	4410.8 cd
40 %	3528.6 cd
30 %	2646.5 cd
20 %	1764.3 cd
10 %	882.2 cd

Peak intensity: 8821.5 cd
 Number of c-planes: 24

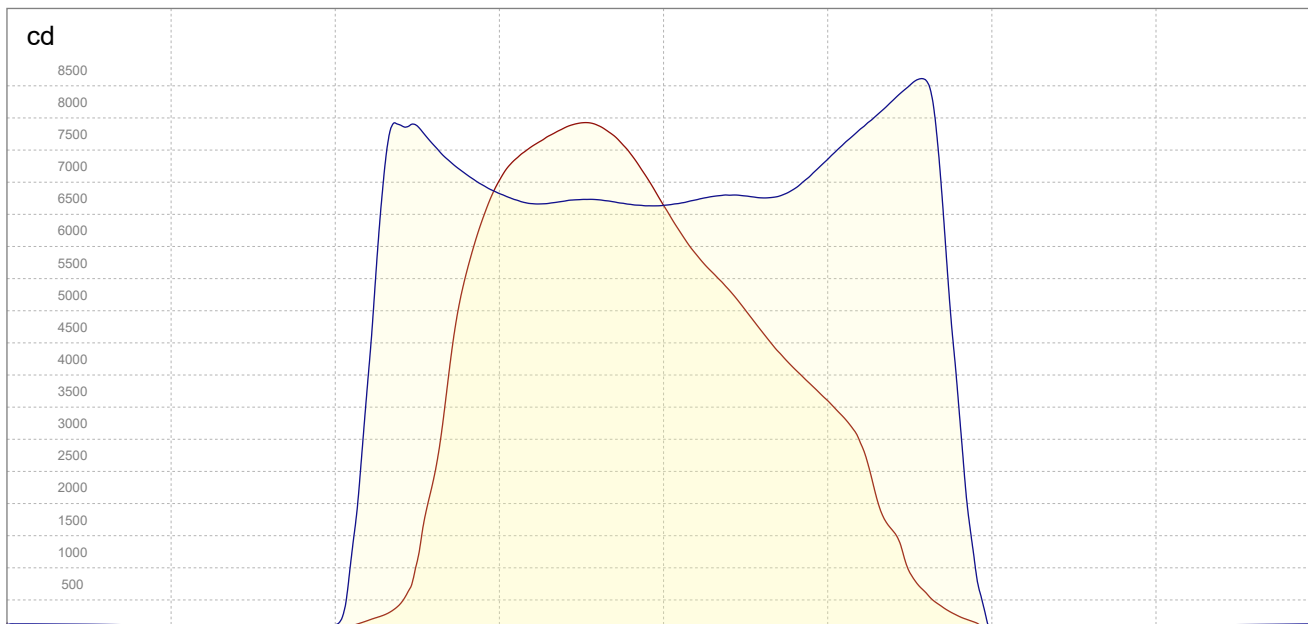
Iso-illuminance Diagram (Iso-lux)



50.0 %	398.6 lx
30.0 %	239.2 lx
10.0 %	79.7 lx
5.0 %	39.9 lx
3.0 %	23.9 lx

Peak illuminance: 797.2 lx
 Mounting height: 3.0 m
 Number of c-planes: 24

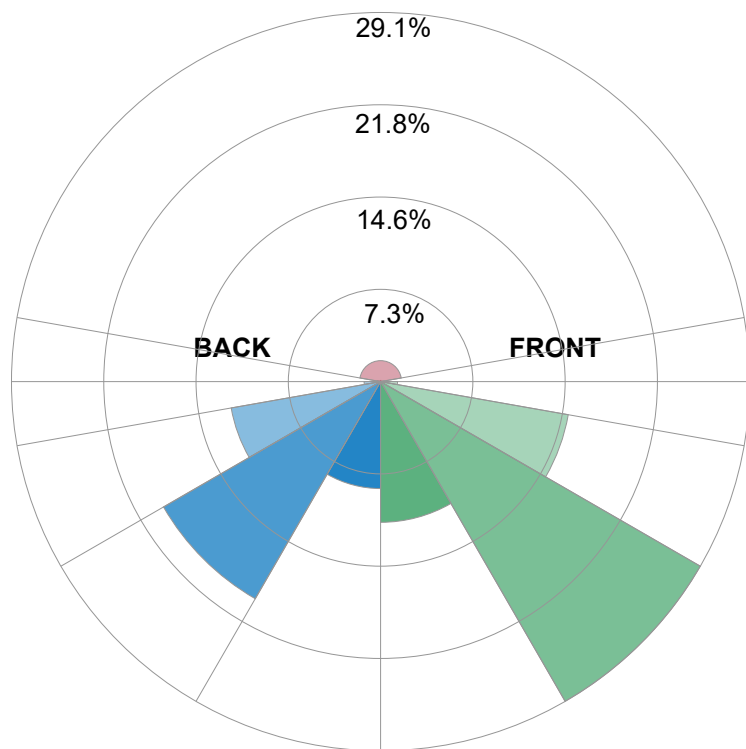
Linear intensity distribution



— C0 - C180
— C90 - C270

IESNA TM-15-07 Luminaire Classification System For Outdoor Luminaires

BUG rating B4 U3 G4



Forward Light

Low (0-30°)	3177.7 lm	11.1%
Medium (30-60°)	8337.4 lm	29.1%
High (60-80°)	4304.2 lm	15%
Very High	381.4 lm	1.3%

Back Light

Low (0-30°)	2415.2 lm	8.4%
Medium (30-60°)	5662.3 lm	19.8%
High (60-80°)	3426.5 lm	12%
Very High	372.7 lm	1.3%

Uplight

Low (90-100°)	81.9 lm	0.3%
High (100-180°)	473.5 lm	1.7%

Total

Sum	28642 lm	100%
-----	----------	------