

Laboratory and Equipment

Test lab
Spectrometer Manufacturer and Model
Measurement date

n/a - serial: n/a sensor serial: n/a
n/a, n/a – n/a
7/13/2024

Measurement Conditions

Tested c-planes
Tested gamma angles
Input Power

25 – distance {C_PLANES_DIST}°
181 – {H_PLANES_DIST}°
137.4 W

Tested Light Source

Luminaire
Basic Luminous Shape
Item No.
Manufacturer

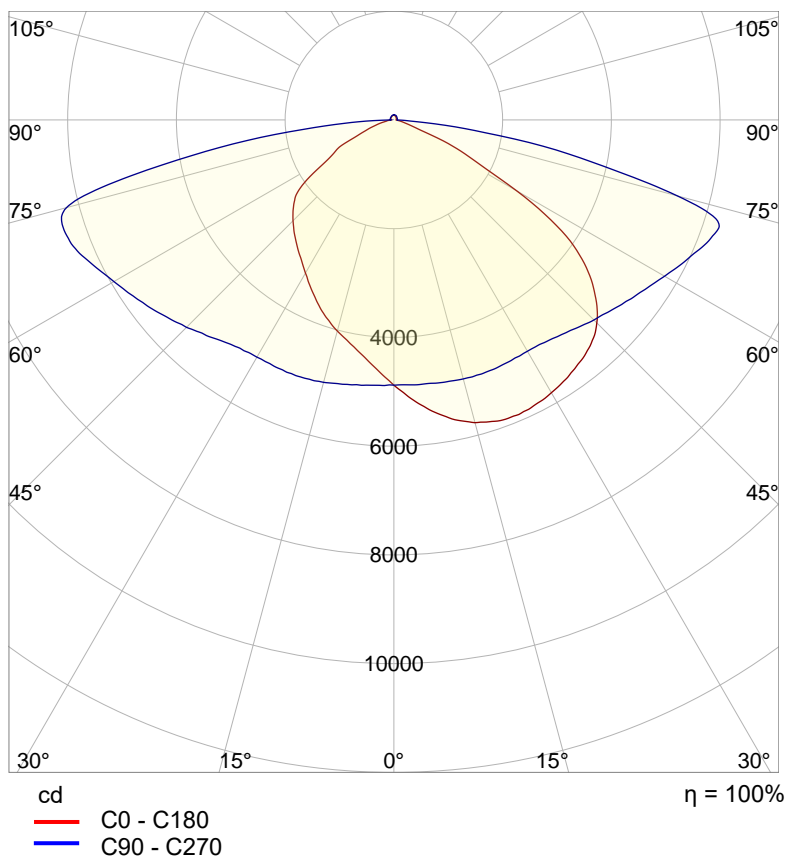
Tundra Area Light - TND-PL-SB150-01
PANEL
Grizzly Lighting Systems

Main Light Measurement Results

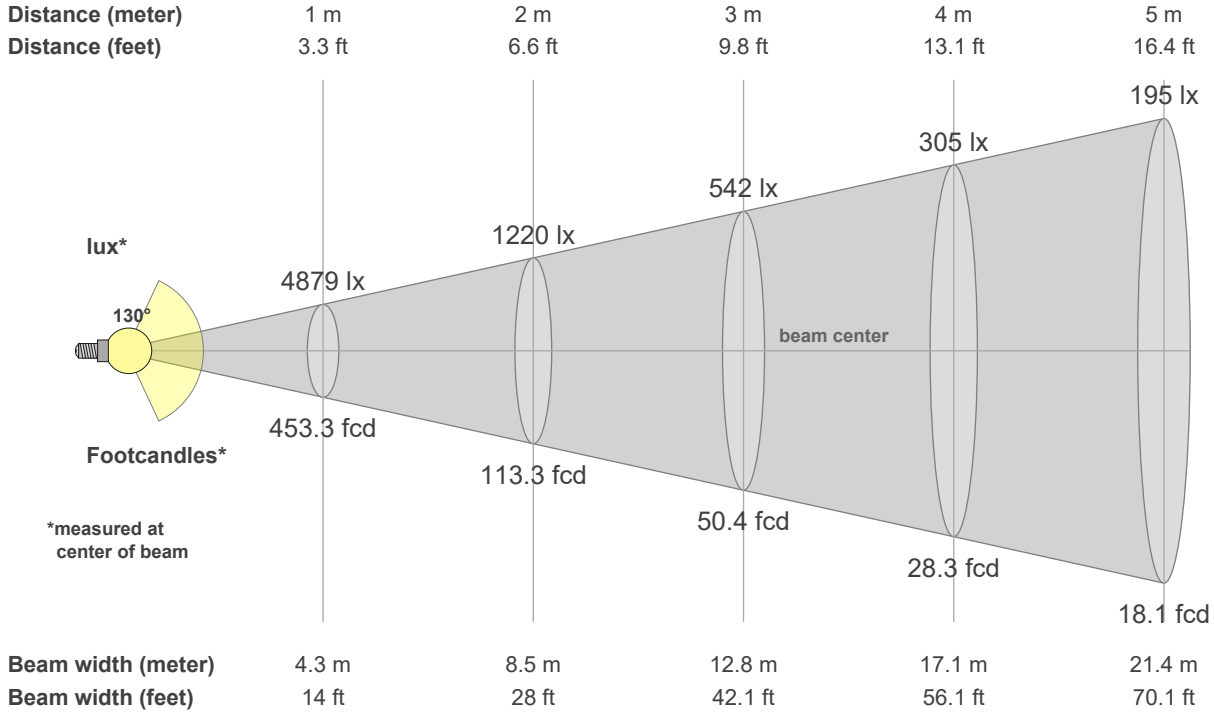
Output – Total Lumen (Up% / Down%)
Efficiency
Peak Intensity
Correlated Color Temperature, CCT
Color Rendering Index

21183 lm – 1.94% / 98.06%
154 lm/W
6397 cd
4000 K
CRI 70.0

Polar light distribution diagram

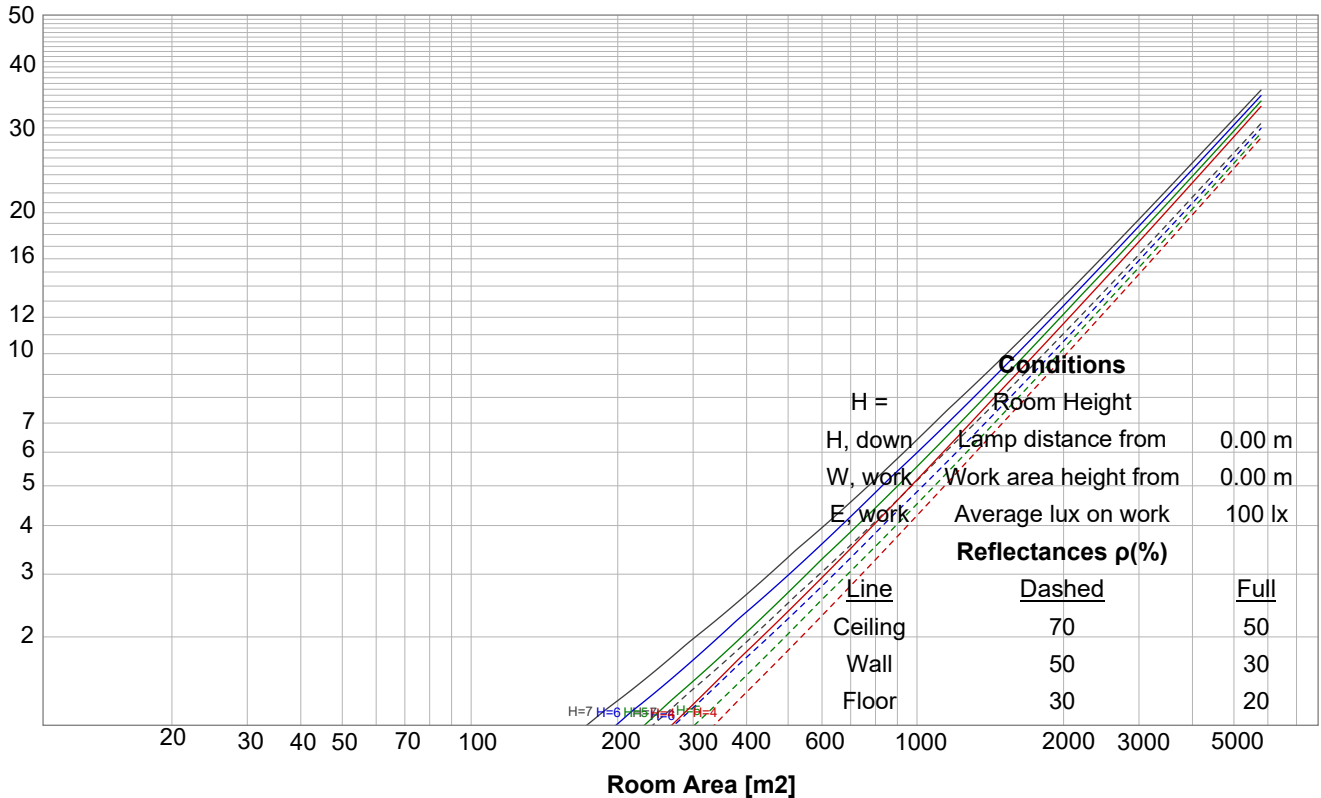


Beam details

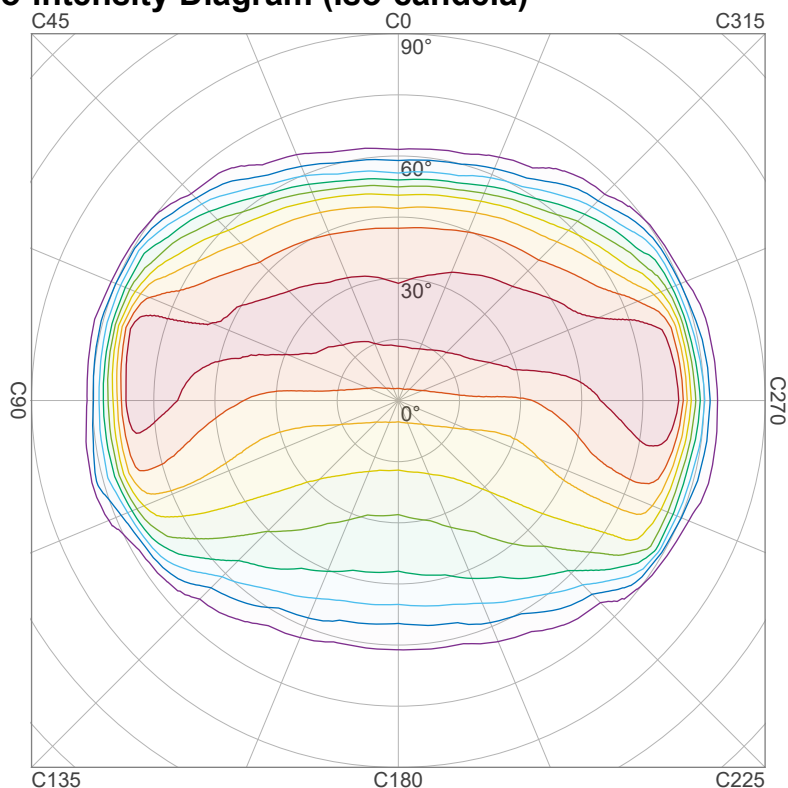


Luminaire budgetary diagram

LAMPS (number of lamps)



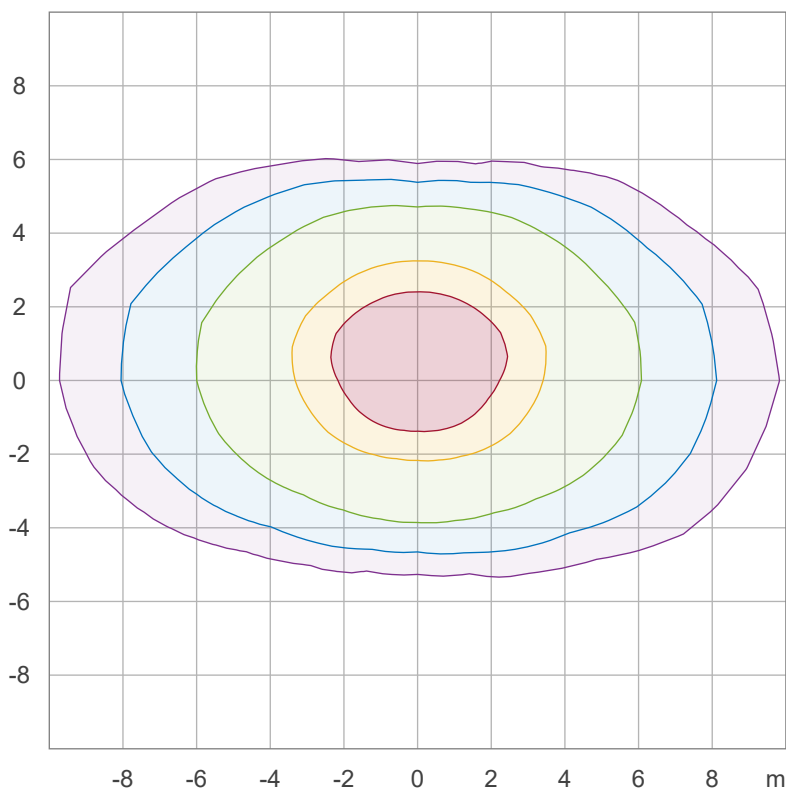
Iso-intensity Diagram (Iso-candela)



90 %	5756.9 cd
80 %	5117.3 cd
70 %	4477.6 cd
60 %	3838.0 cd
50 %	3198.3 cd
40 %	2558.6 cd
30 %	1919.0 cd
20 %	1279.3 cd
10 %	639.7 cd

Peak intensity: 6396.6 cd
 Number of c-planes: 24

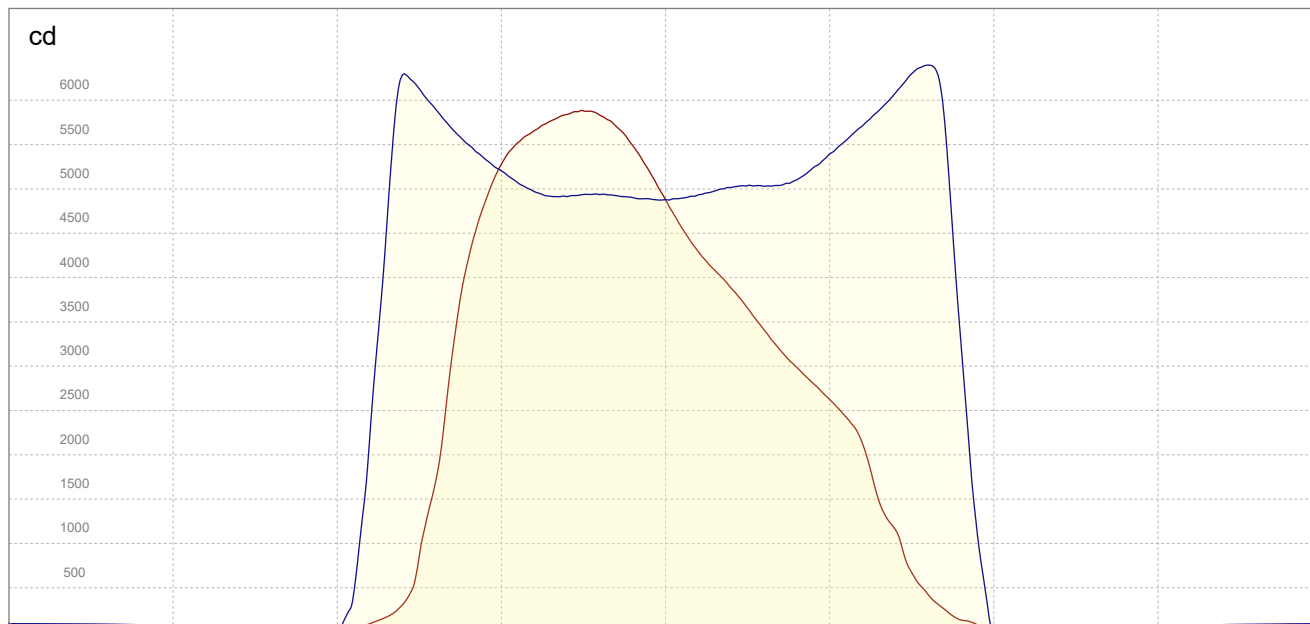
Iso-illuminance Diagram (Iso-lux)



50.0 %	294.6 lx
30.0 %	176.8 lx
10.0 %	58.9 lx
5.0 %	29.5 lx
3.0 %	17.7 lx

Peak illuminance: 589.2 lx
 Mounting height: 3.0 m
 Number of c-planes: 24

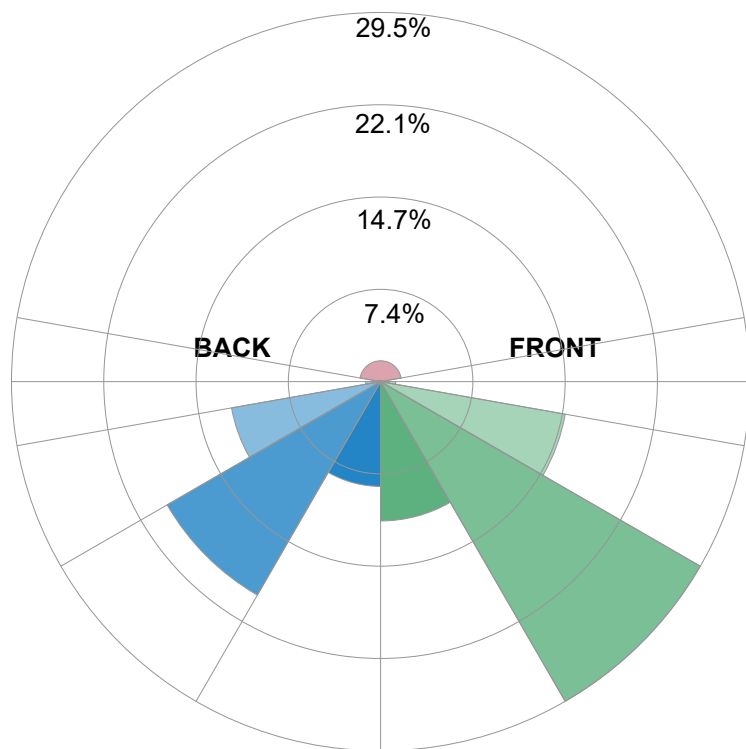
Linear intensity distribution



— C0 - C180
— C90 - C270

IESNA TM-15-07 Luminaire Classification System For Outdoor Luminaires

BUG rating B4 U3 G4



Forward Light

Low (0-30°)	2355.1 lm	11.1%
Medium (30-60°)	6239.9 lm	29.5%
High (60-80°)	3168.9 lm	15%
Very High	255.9 lm	1.2%

Back Light

Low (0-30°)	1771.1 lm	8.4%
Medium (30-60°)	4166.7 lm	19.7%
High (60-80°)	2558.3 lm	12.1%
Very High	252.4 lm	1.2%

Uplight

Low (90-100°)	59.5 lm	0.3%
High (100-180°)	352.3 lm	1.7%

Total

Sum	21183 lm	100%
-----	----------	------