

Test report

Laboratory and Equipment

Test lab
Spectrometer Manufacturer and Model
Measurement date

n/a - serial: n/a sensor serial: n/a
n/a, n/a – n/a
7/13/2024

Measurement Conditions

Tested c-planes
Tested gamma angles
Input Power

25 – distance {C_PLANES_DIST}°
181 – {H_PLANES_DIST}°
145.5 W

Tested Light Source

Luminaire
Basic Luminous Shape
Item No.
Manufacturer

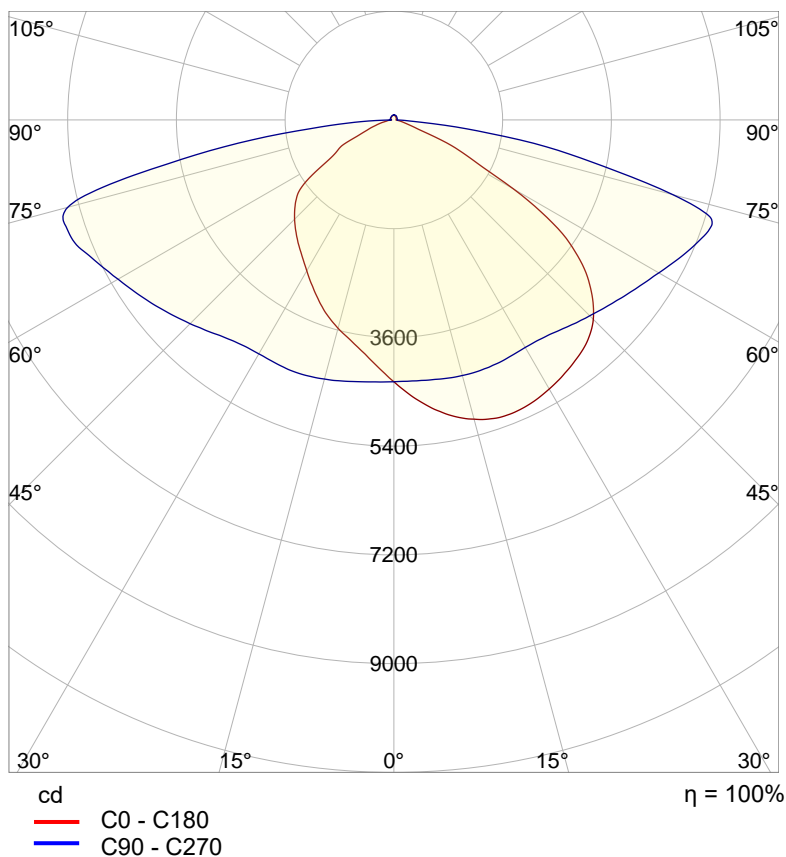
Tundra Area Light - TND-PL-SB150-01
PANEL
Grizzly Lighting Systems

Main Light Measurement Results

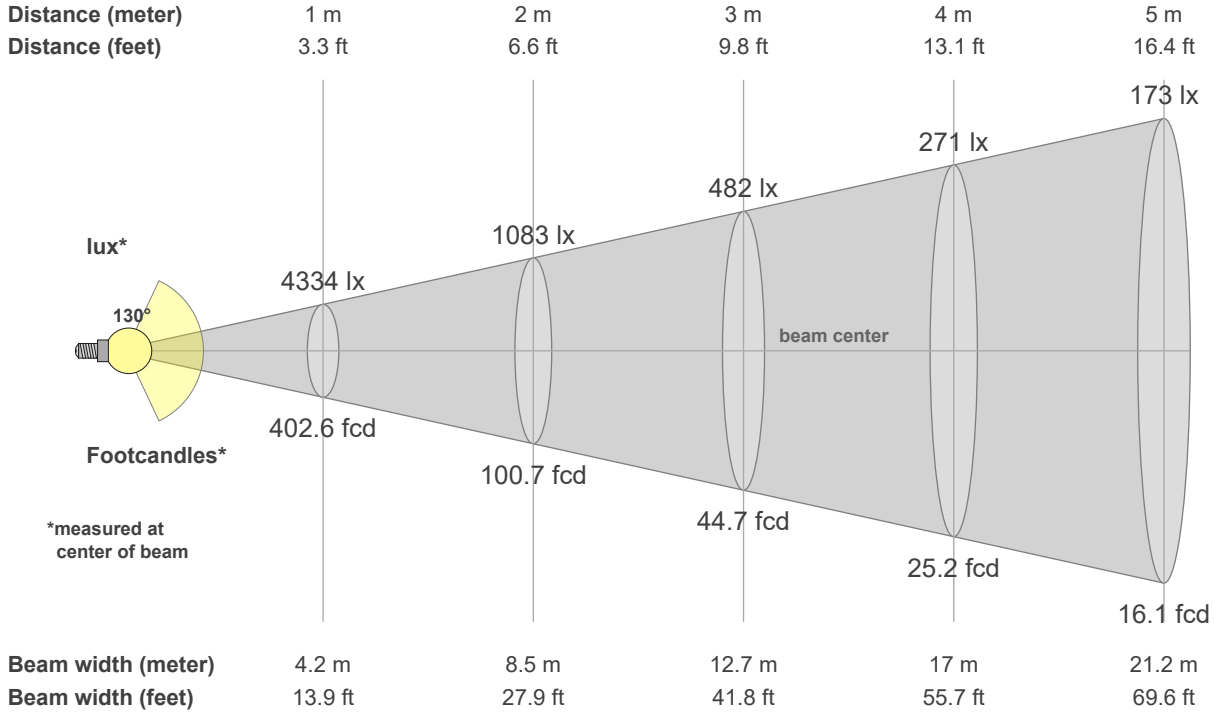
Output – Total Lumen (Up% / Down%)
Efficiency
Peak Intensity
Correlated Color Temperature, CCT
Color Rendering Index

18718 lm – 1.95% / 98.05%
129 lm/W
5721 cd
3000 K
CRI 70.0

Polar light distribution diagram

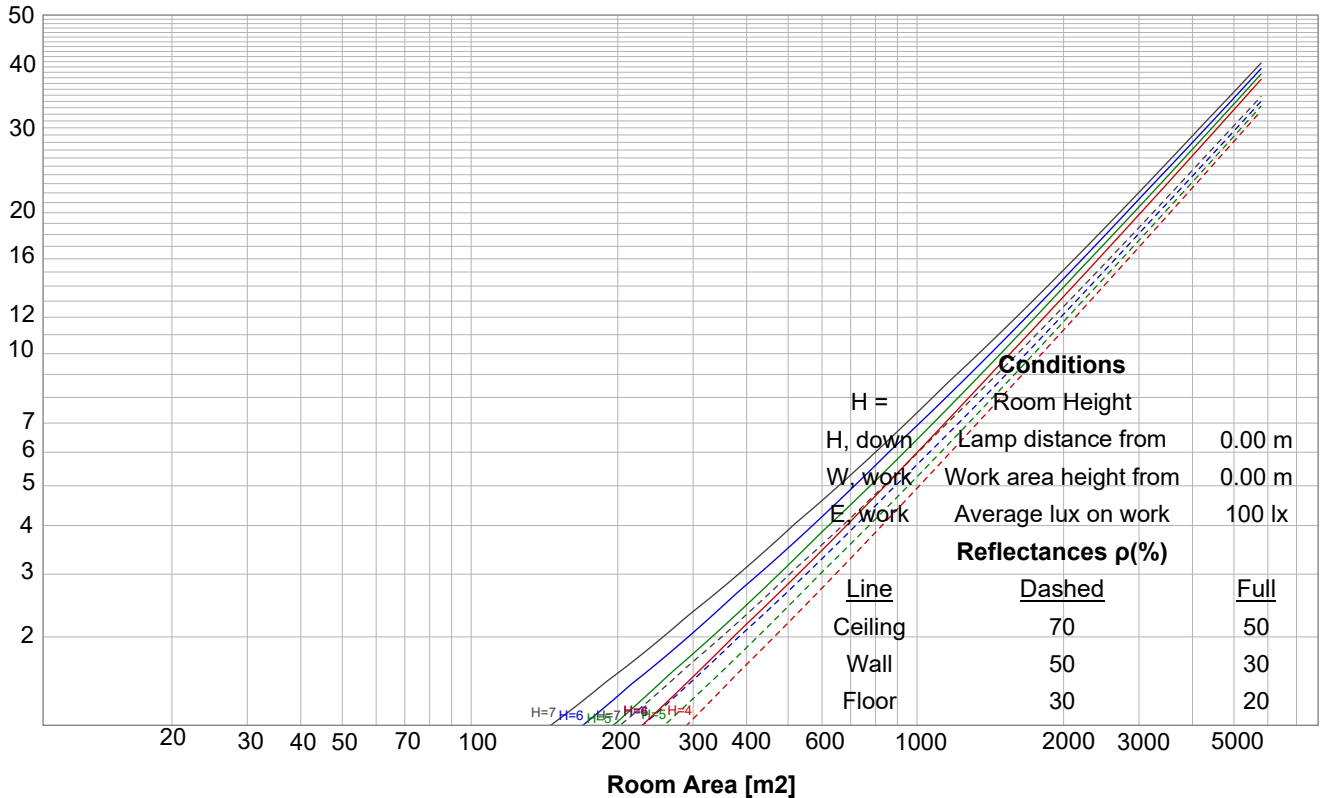


Beam details

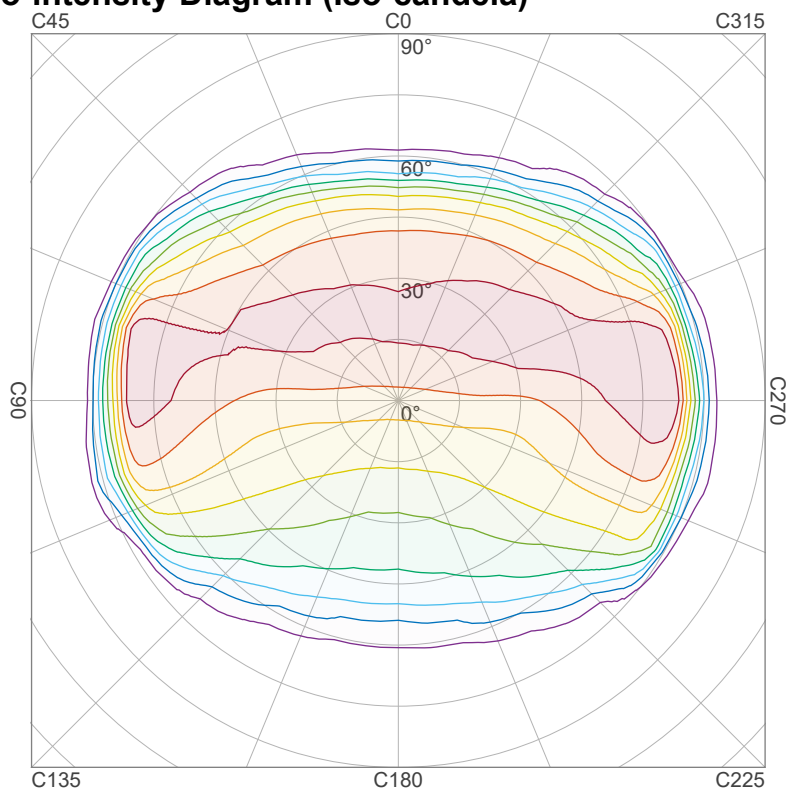


Luminaire budgetary diagram

LAMPS (number of lamps)



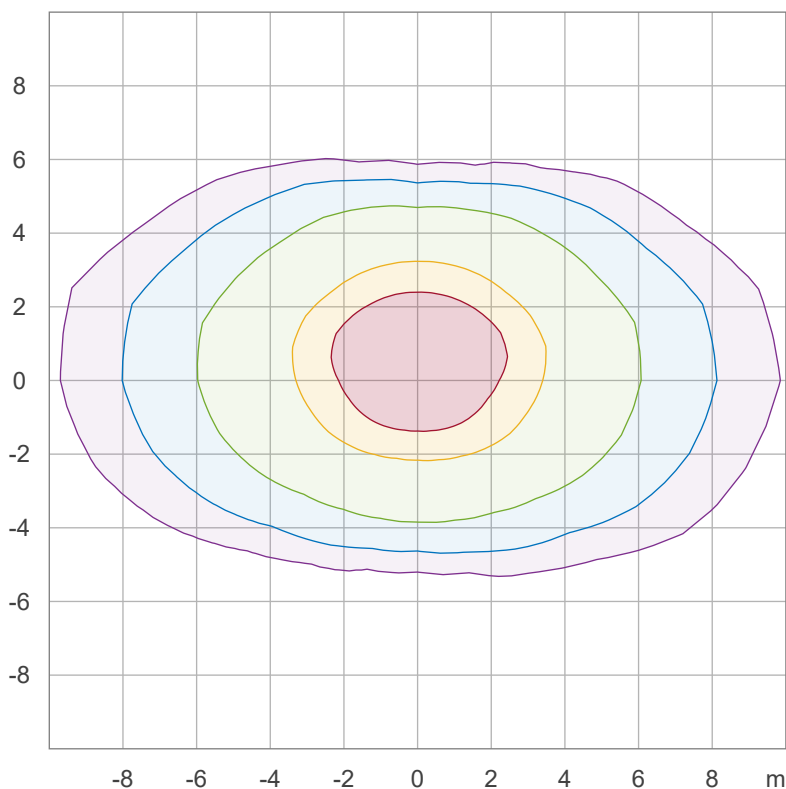
Iso-intensity Diagram (Iso-candela)



90 %	5148.8 cd
80 %	4576.7 cd
70 %	4004.6 cd
60 %	3432.5 cd
50 %	2860.5 cd
40 %	2288.4 cd
30 %	1716.3 cd
20 %	1144.2 cd
10 %	572.1 cd

Peak intensity: 5720.9 cd
 Number of c-planes: 24

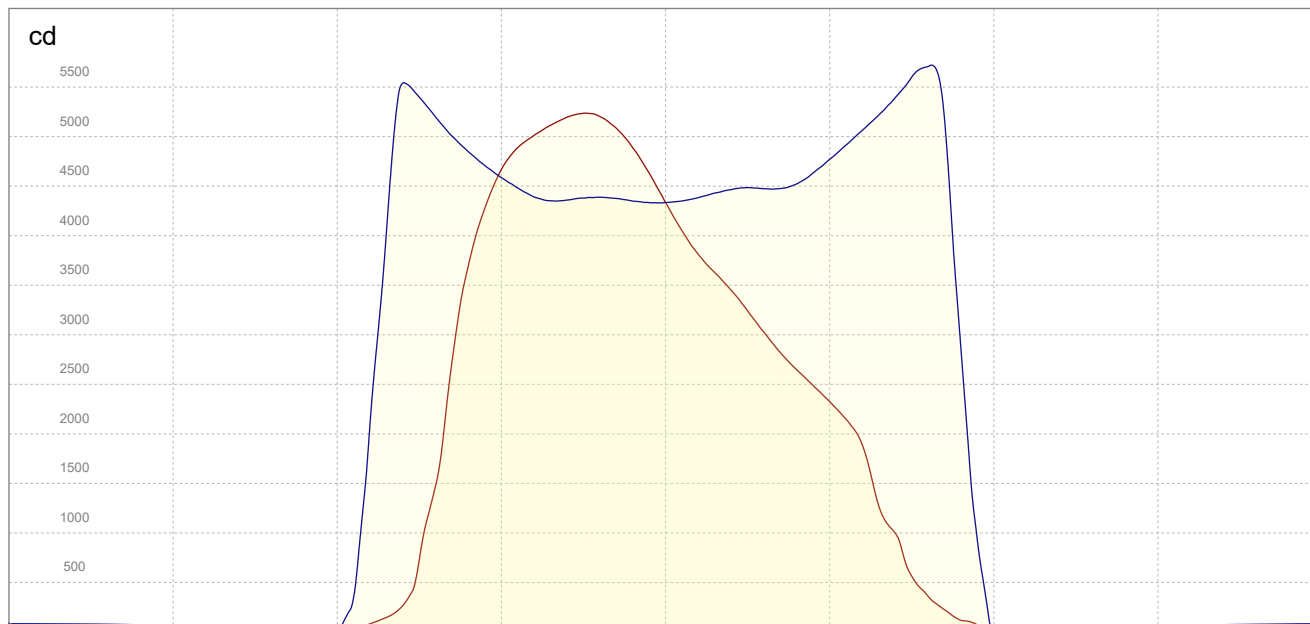
Iso-illuminance Diagram (Iso-lux)



50.0 %	262.1 lx
30.0 %	157.3 lx
10.0 %	52.4 lx
5.0 %	26.2 lx
3.0 %	15.7 lx

Peak illuminance: 524.2 lx
 Mounting height: 3.0 m
 Number of c-planes: 24

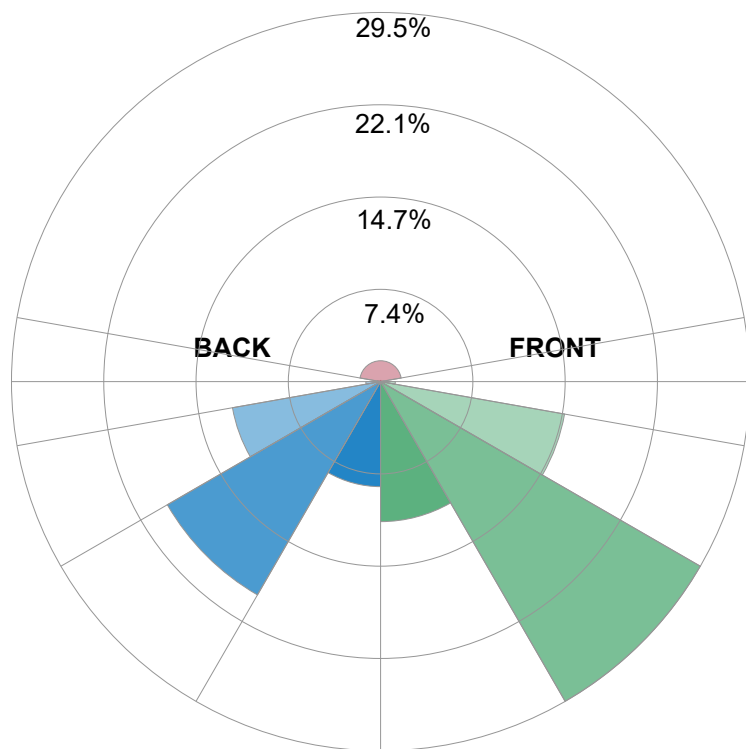
Linear intensity distribution



— C0 - C180
— C90 - C270

IESNA TM-15-07 Luminaire Classification System For Outdoor Luminaires

BUG rating B3 U3 G3



Forward Light

Low (0-30°)	2093.9 lm	11.2%
Medium (30-60°)	5520.3 lm	29.5%
High (60-80°)	2793.6 lm	14.9%
Very High	220 lm	1.2%

Back Light

Low (0-30°)	1570.7 lm	8.4%
Medium (30-60°)	3683 lm	19.7%
High (60-80°)	2249.2 lm	12%
Very High	220.6 lm	1.2%

Uplight

Low (90-100°)	52.6 lm	0.3%
High (100-180°)	312.1 lm	1.7%

Total

Sum	18718 lm	100%
-----	----------	------