

Test report

Laboratory and Equipment

Test lab
Spectrometer Manufacturer and Model
Measurement date

n/a - serial: n/a sensor serial: n/a
n/a, n/a – n/a
7/13/2024

Measurement Conditions

Tested c-planes
Tested gamma angles
Input Power

25 – distance {C_PLANES_DIST}°
181 – {H_PLANES_DIST}°
90.8 W

Tested Light Source

Luminaire
Basic Luminous Shape
Item No.
Manufacturer

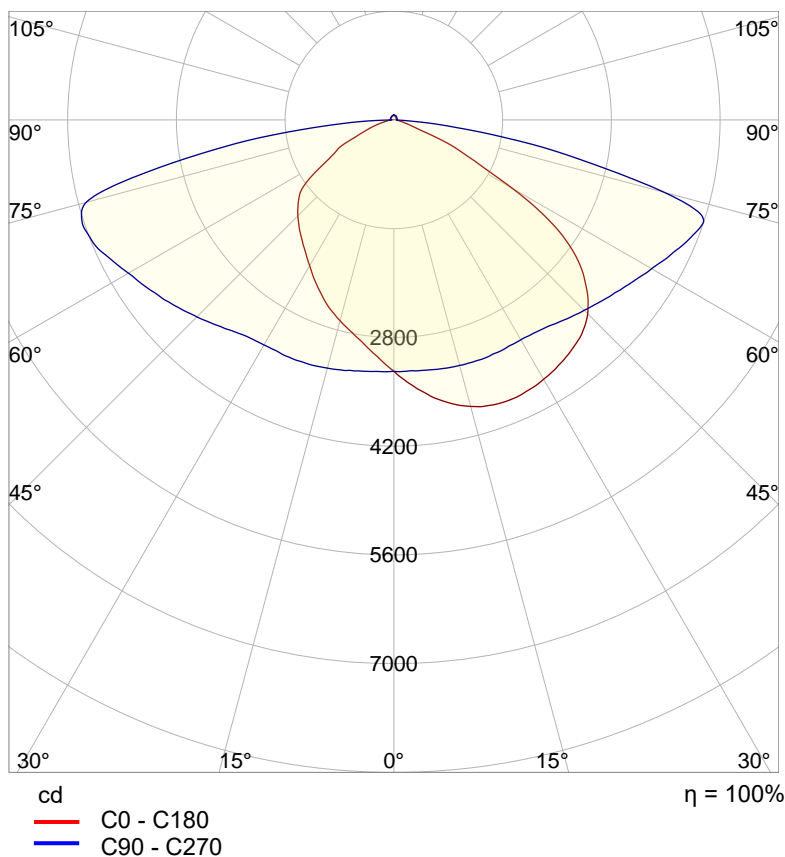
Tundra Area Light - TND-PL-SB150-01
PANEL
Grizzly Lighting Systems

Main Light Measurement Results

Output – Total Lumen (Up% / Down%)
Efficiency
Peak Intensity
Correlated Color Temperature, CCT
Color Rendering Index

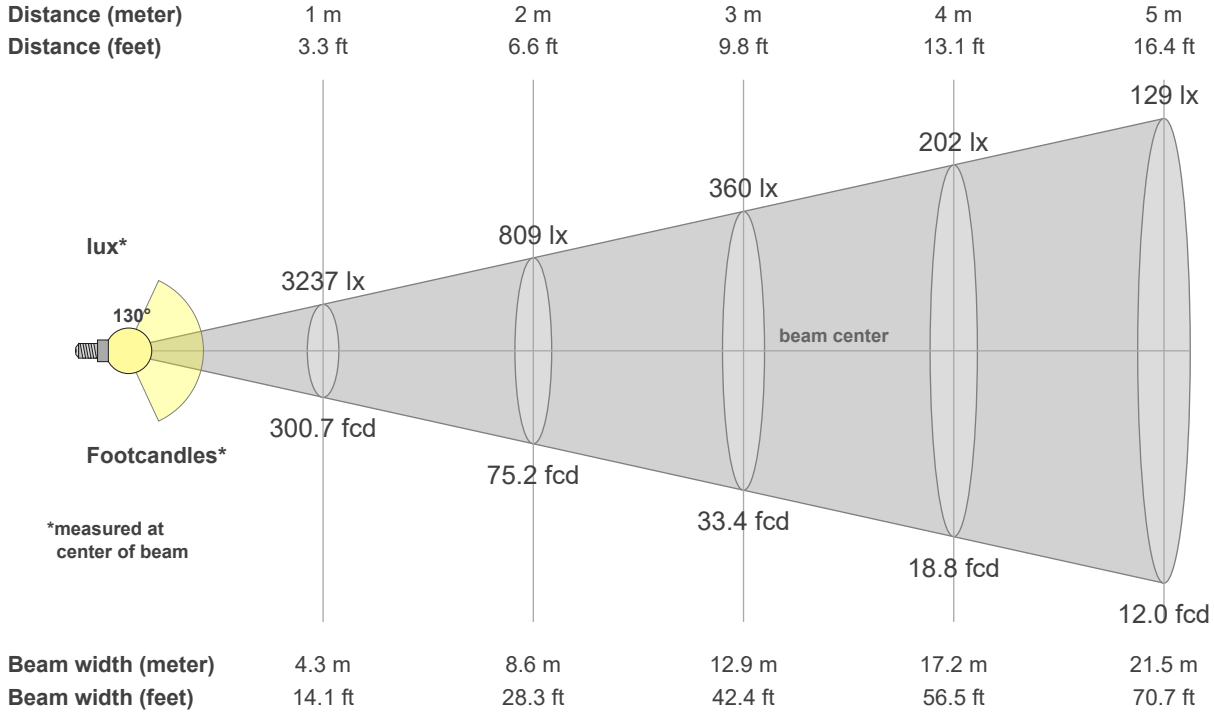
14118 lm – 1.94% / 98.06%
156 lm/W
4227 cd
5000 K
CRI 70.0

Polar light distribution diagram



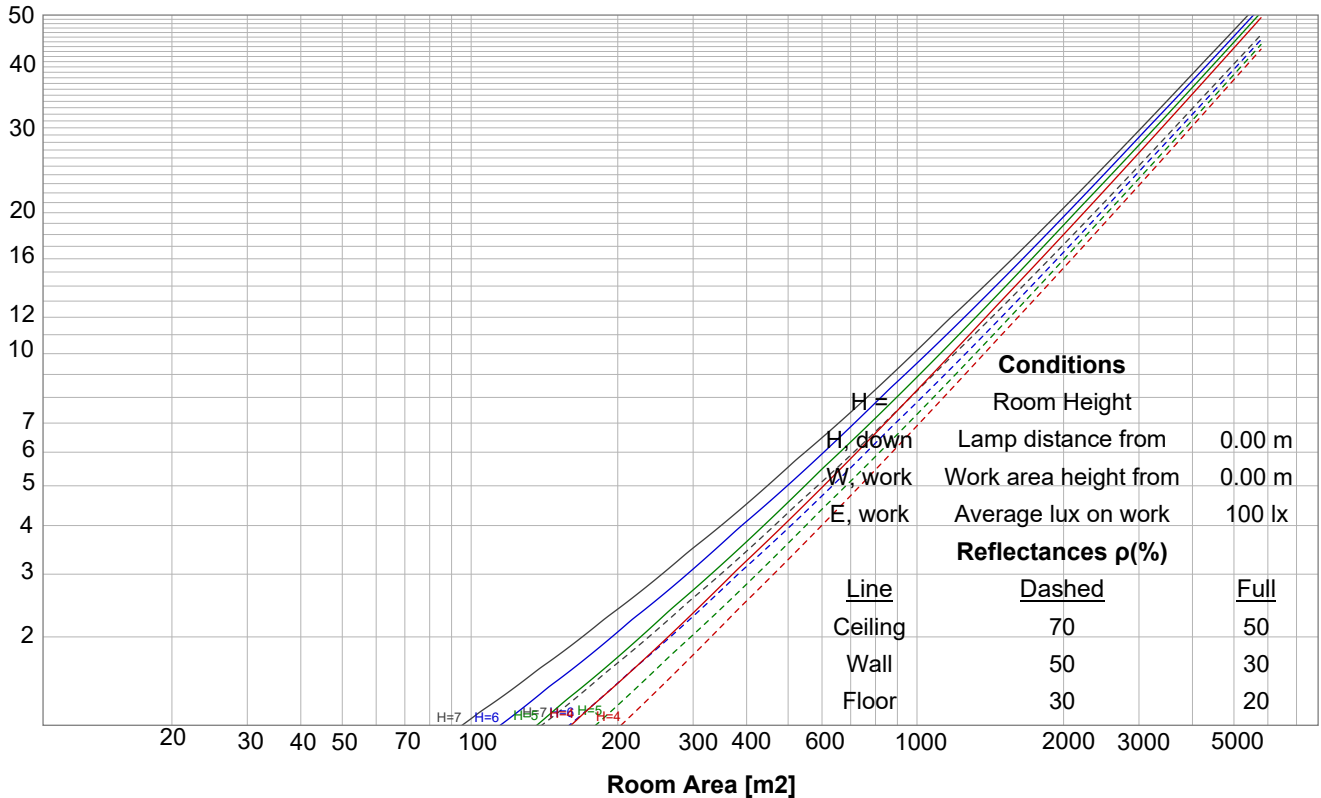
Test report

Beam details

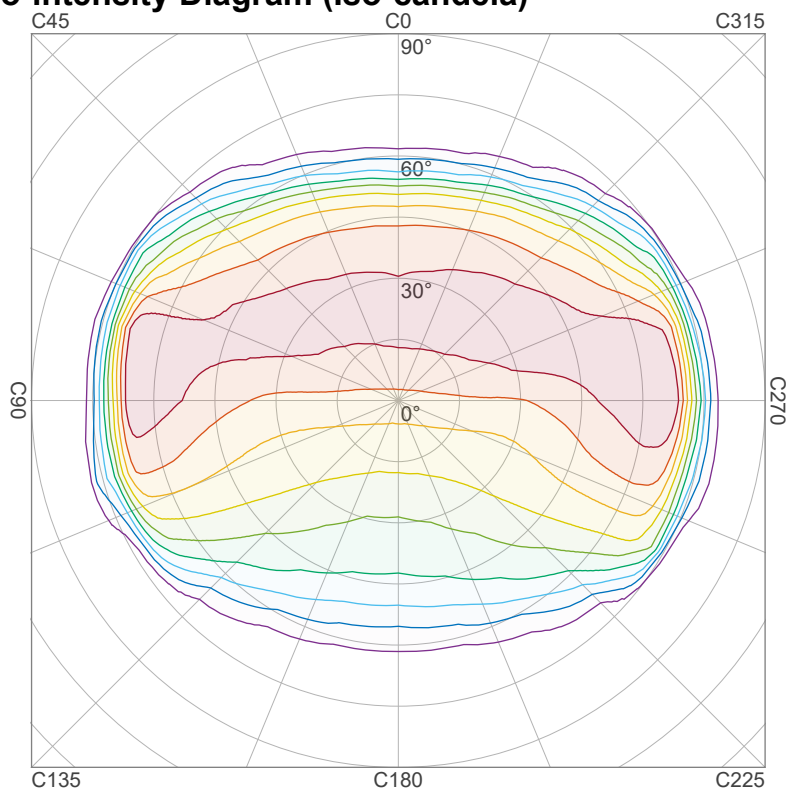


Luminaire budgetary diagram

LAMPS (number of lamps)



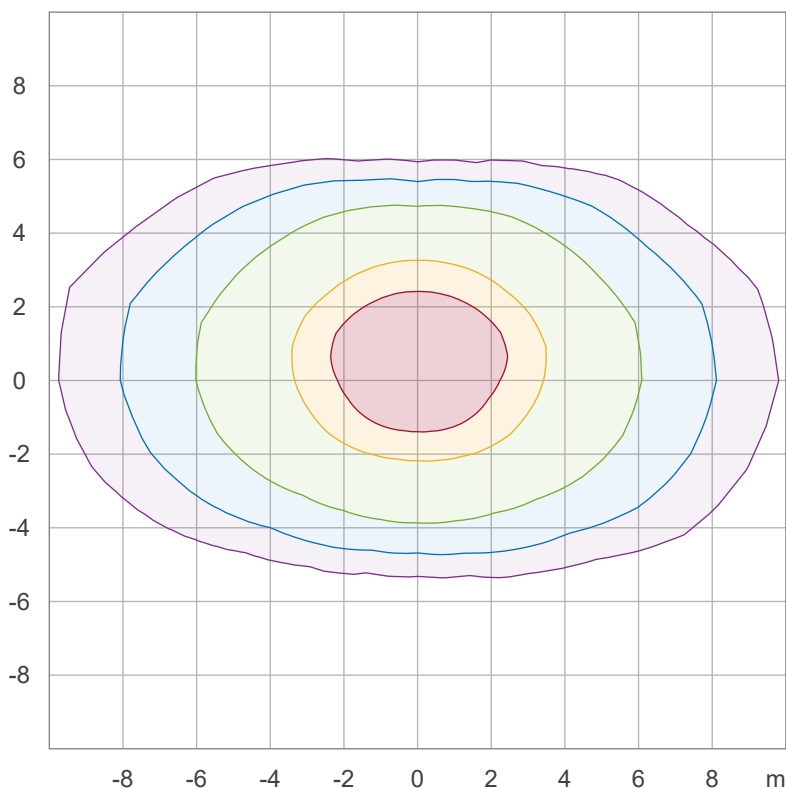
Iso-intensity Diagram (Iso-candela)



90 %	3804.4 cd
80 %	3381.7 cd
70 %	2959.0 cd
60 %	2536.3 cd
50 %	2113.6 cd
40 %	1690.8 cd
30 %	1268.1 cd
20 %	845.4 cd
10 %	422.7 cd

Peak intensity: 4227.1 cd
 Number of c-planes: 24

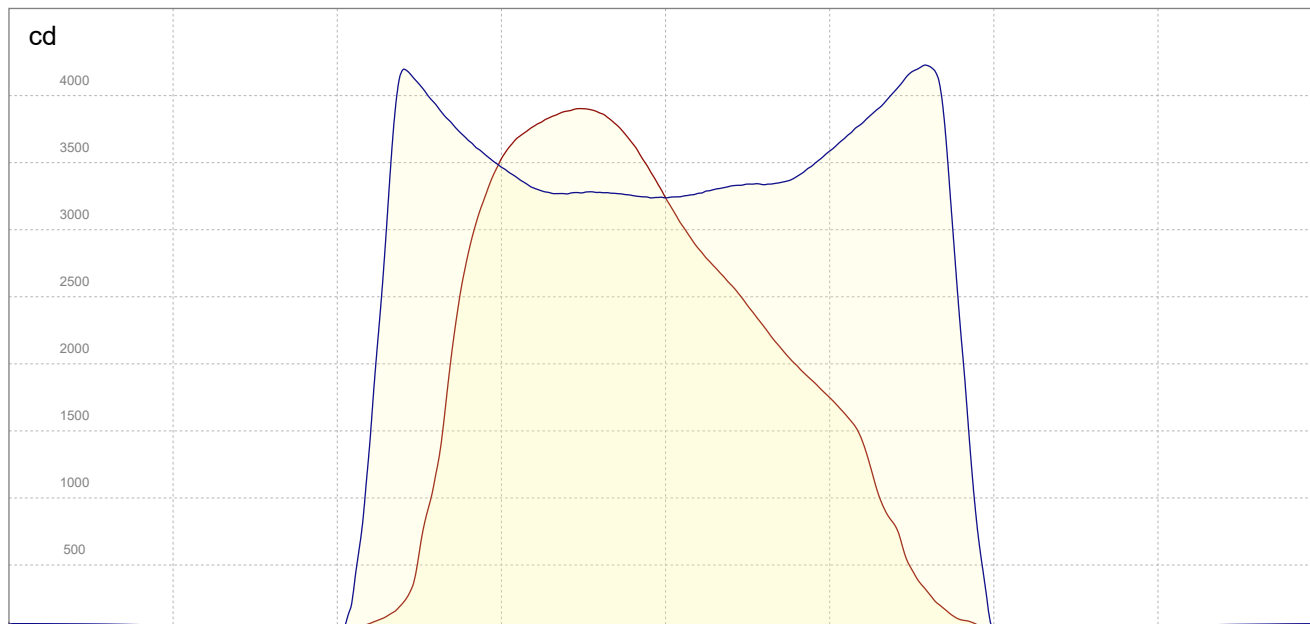
Iso-illuminance Diagram (Iso-lux)



50.0 %	195.1 lx
30.0 %	117.0 lx
10.0 %	39.0 lx
5.0 %	19.5 lx
3.0 %	11.7 lx

Peak illuminance: 390.1 lx
 Mounting height: 3.0 m
 Number of c-planes: 24

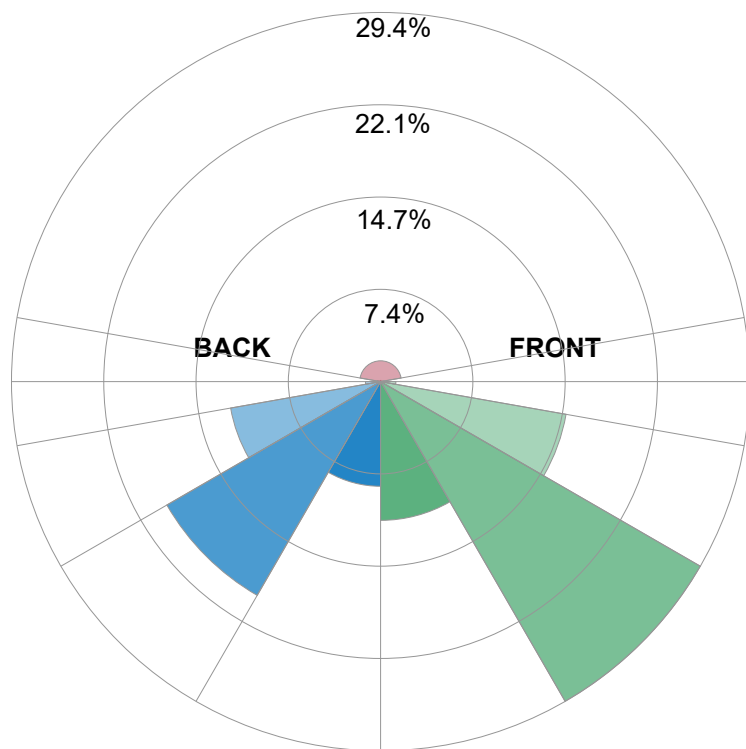
Linear intensity distribution



— C0 - C180
— C90 - C270

IESNA TM-15-07 Luminaire Classification System For Outdoor Luminaires

BUG rating B3 U3 G3



Forward Light

Low (0-30°)	1560.8 lm	11.1%
Medium (30-60°)	4152.9 lm	29.4%
High (60-80°)	2118.8 lm	15%
Very High	171.8 lm	1.2%

Back Light

Low (0-30°)	1177.5 lm	8.3%
Medium (30-60°)	2776.8 lm	19.7%
High (60-80°)	1713.1 lm	12.1%
Very High	170.2 lm	1.2%

Uplight

Low (90-100°)	39.7 lm	0.3%
High (100-180°)	234.2 lm	1.7%

Total

Sum	14118 lm	100%
-----	----------	------