

Test report

Laboratory and Equipment

Test lab
Spectrometer Manufacturer and Model
Measurement date

n/a - serial: n/a sensor serial: n/a
n/a, n/a - n/a
7/13/2024

Measurement Conditions

Tested c-planes
Tested gamma angles
Input Power

17 - distance {C_PLANES_DIST}°
181 - {H_PLANES_DIST}°
92.4 W

Tested Light Source

Luminaire
Basic Luminous Shape
Item No.
Manufacturer

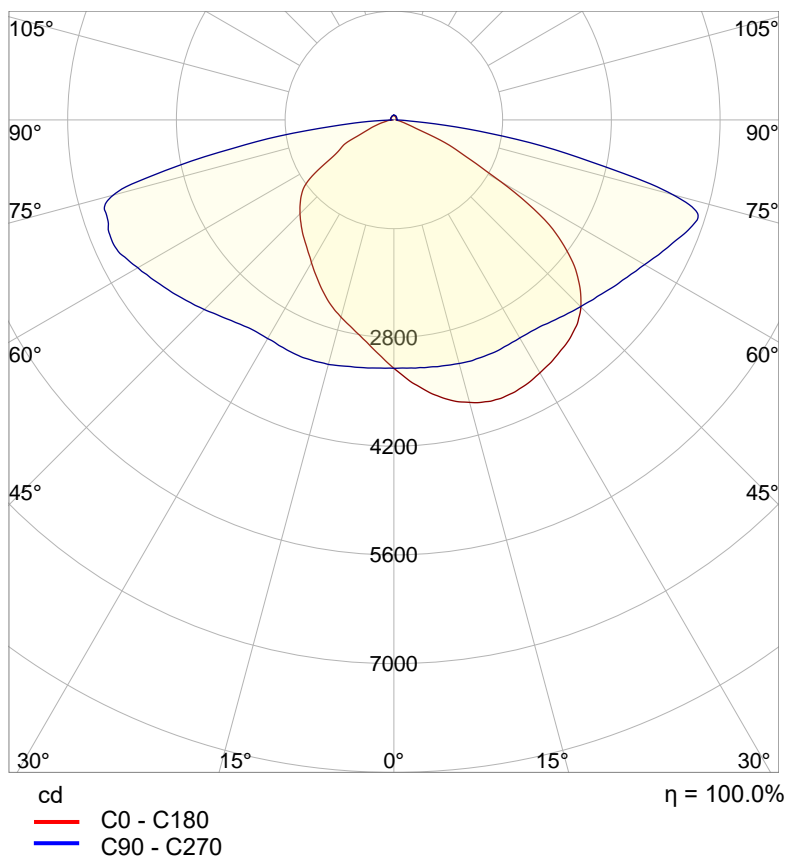
Tundra Area Light - TND-PL-SB150-01
PANEL
Grizzly Lighting Systems

Main Light Measurement Results

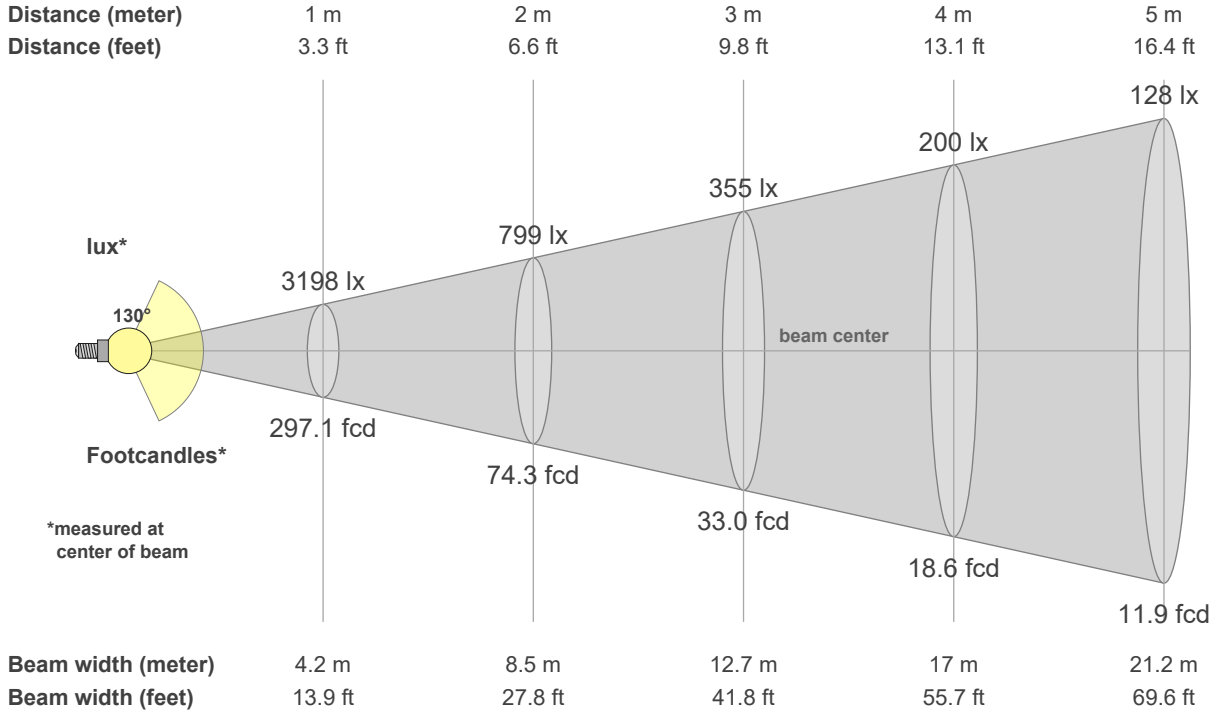
Output - Total Lumen (Up% / Down%)
Efficiency
Peak Intensity
Correlated Color Temperature, CCT
Color Rendering Index

13667 lm - 1.95% / 98.05%
148 lm/W
4113 cd
3000 K
CRI 70.0

Polar light distribution diagram

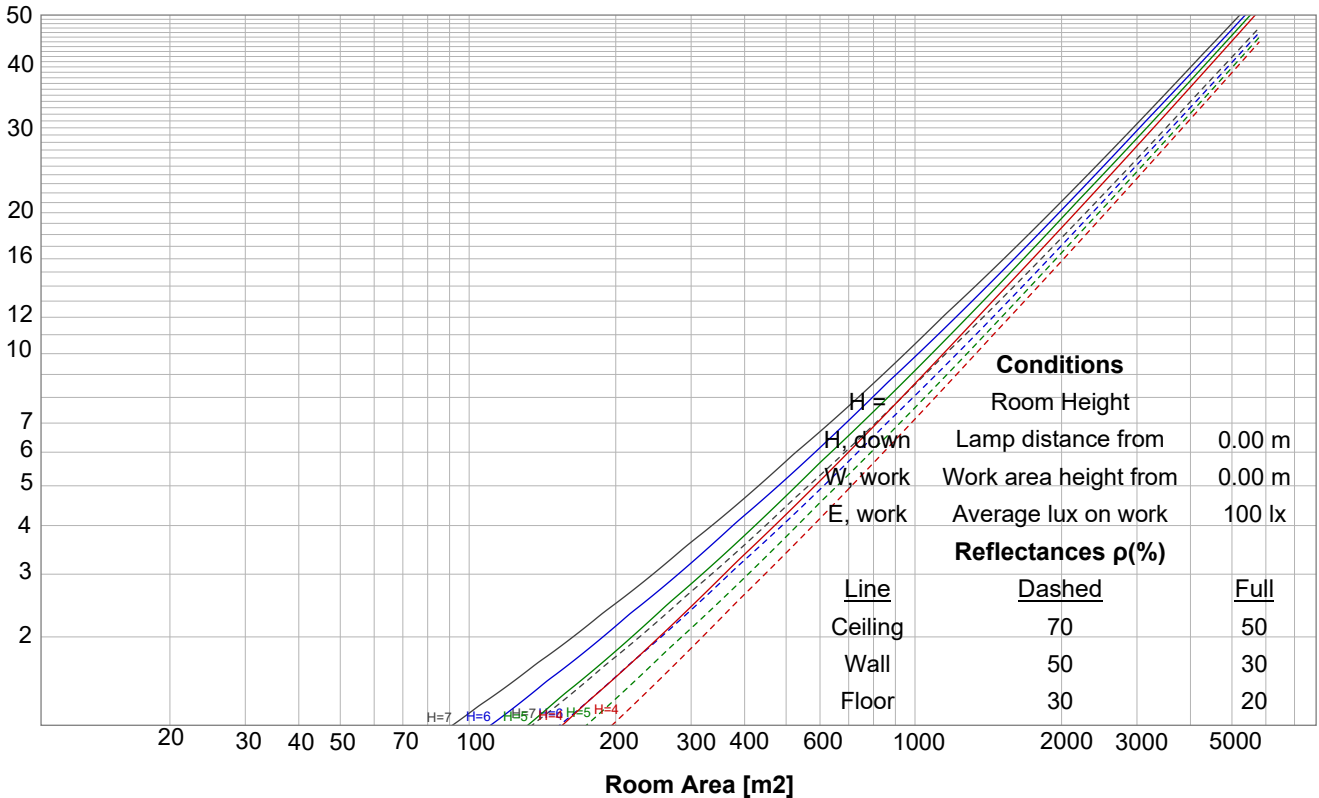


Beam details

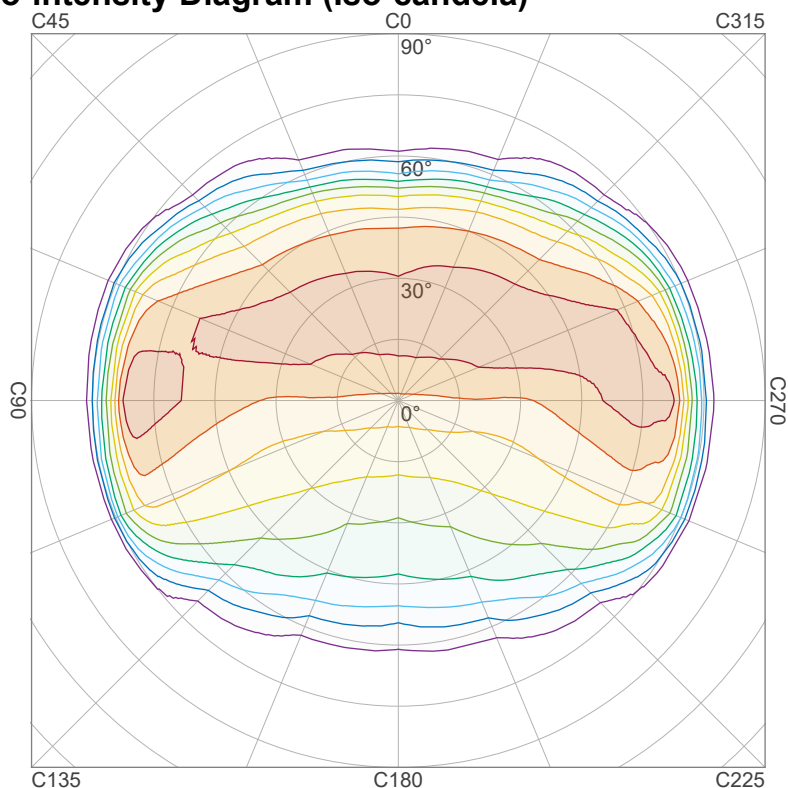


Luminaire budgetary diagram

LAMPS (number of lamps)



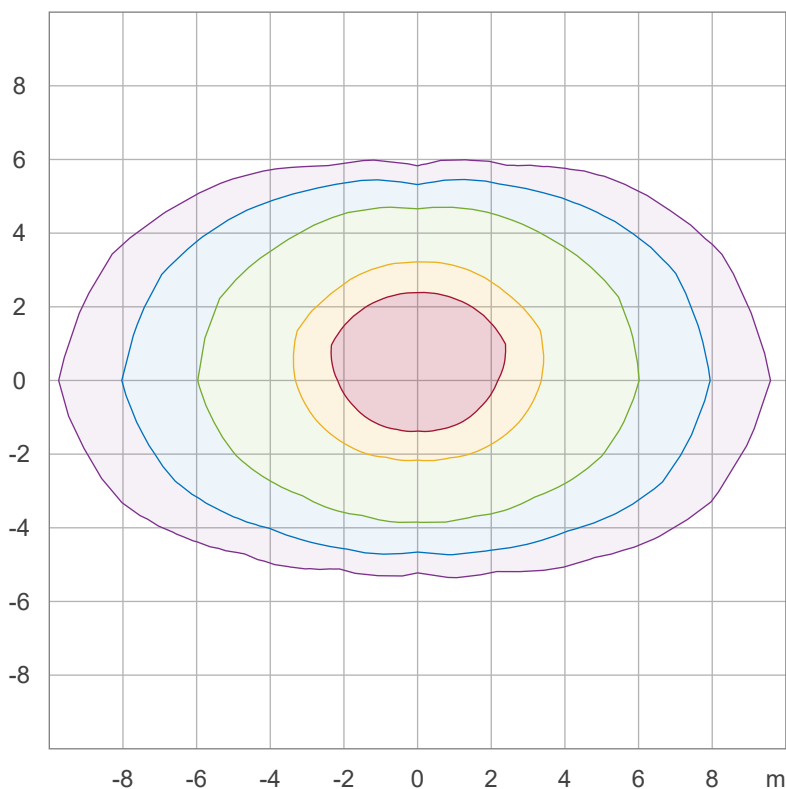
Iso-intensity Diagram (Iso-candela)



90 %	3701.8 cd
80 %	3290.5 cd
70 %	2879.2 cd
60 %	2467.9 cd
50 %	2056.6 cd
40 %	1645.2 cd
30 %	1233.9 cd
20 %	822.6 cd
10 %	411.3 cd

Peak intensity: 4113.1 cd
 Number of c-planes: 16

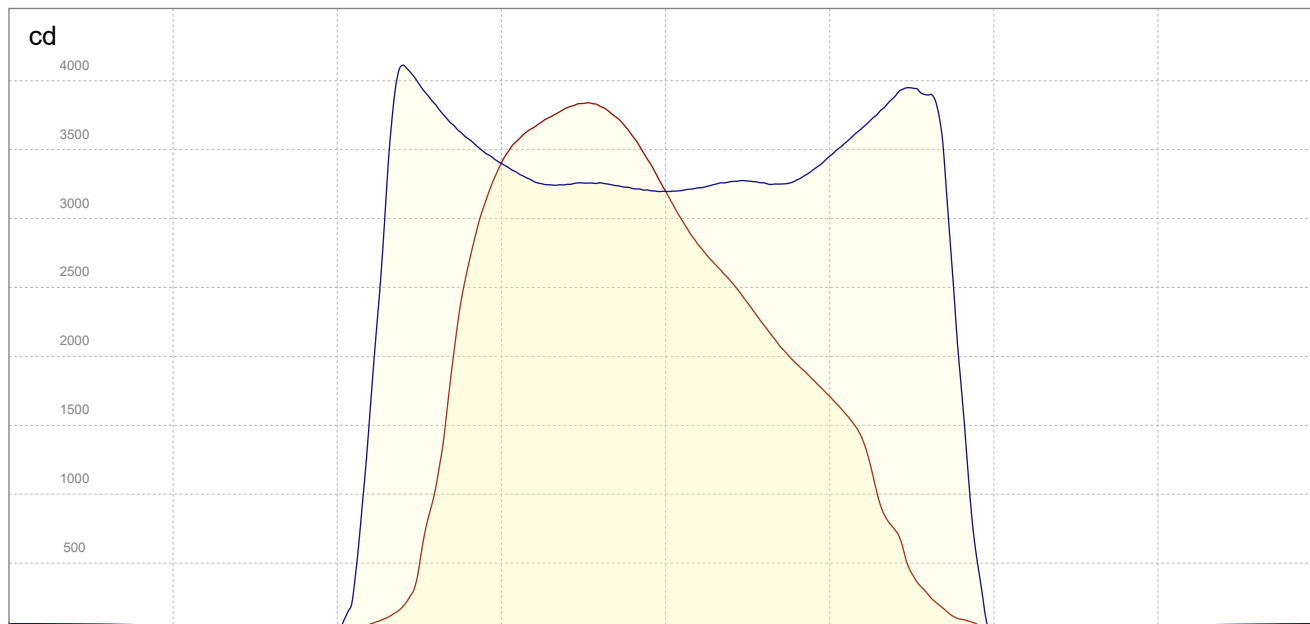
Iso-illuminance Diagram (Iso-lux)



50.0 %	192.9 lx
30.0 %	115.7 lx
10.0 %	38.6 lx
5.0 %	19.3 lx
3.0 %	11.6 lx

Peak illuminance: 385.7 lx
 Mounting height: 3.0 m
 Number of c-planes: 16

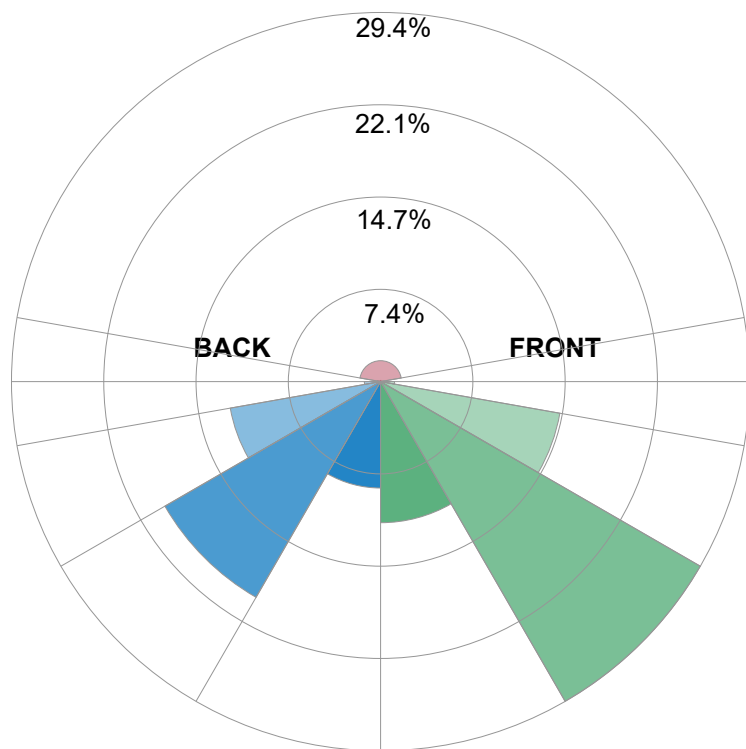
Linear intensity distribution



— C0 - C180
— C90 - C270

IESNA TM-15-07 Luminaire Classification System For Outdoor Luminaires

BUG rating B3 U3 G3



Forward Light

Low (0-30°)	1537.4 lm	11.2%
Medium (30-60°)	4022.1 lm	29.4%
High (60-80°)	1983.5 lm	14.5%
Very High	151.8 lm	1.1%

Back Light

Low (0-30°)	1159.3 lm	8.5%
Medium (30-60°)	2713.9 lm	19.9%
High (60-80°)	1663.1 lm	12.2%
Very High	177 lm	1.3%

Uplight

Low (90-100°)	38.2 lm	0.3%
High (100-180°)	227.9 lm	1.7%

Total

Sum	13667 lm	100%
-----	----------	------