

# Test report

## Laboratory and Equipment

Test lab  
Spectrometer Manufacturer and Model  
Measurement date

n/a - serial: n/a sensor serial: n/a  
n/a, n/a – n/a  
7/13/2024

## Measurement Conditions

Tested c-planes  
Tested gamma angles  
Input Power

17 – distance {C\_PLANES\_DIST}°  
181 – {H\_PLANES\_DIST}°  
66.4 W

## Tested Light Source

Luminaire  
Basic Luminous Shape  
Item No.  
Manufacturer

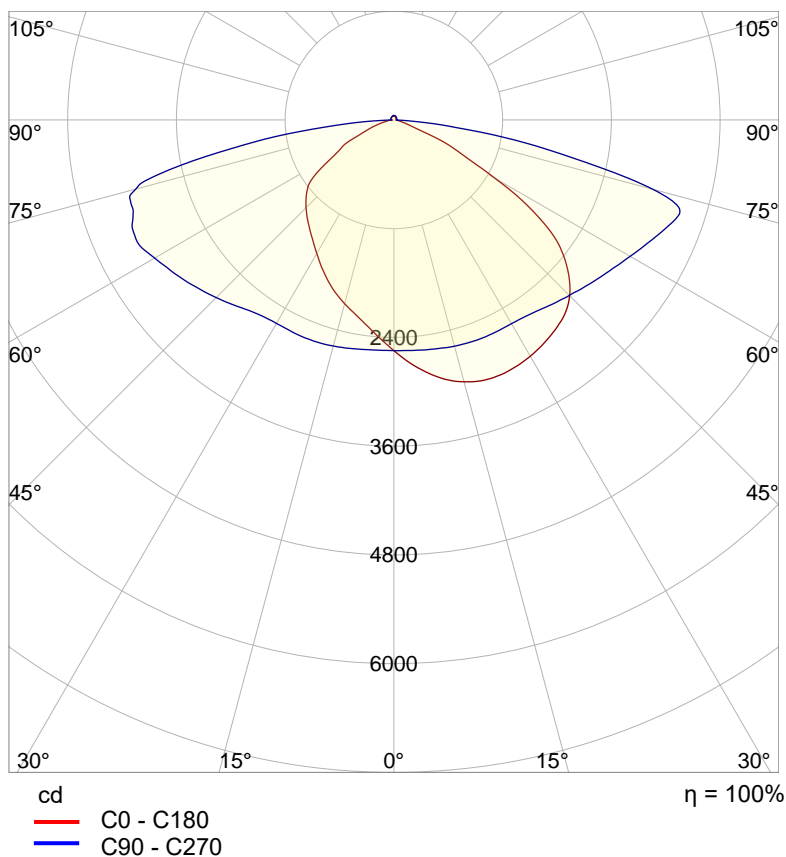
Tundra Area Light - TND-PL-SB150-01  
PANEL  
Grizzly Lighting Systems

## Main Light Measurement Results

Output – Total Lumen (Up% / Down%)  
Efficiency  
Peak Intensity  
Correlated Color Temperature, CCT  
Color Rendering Index

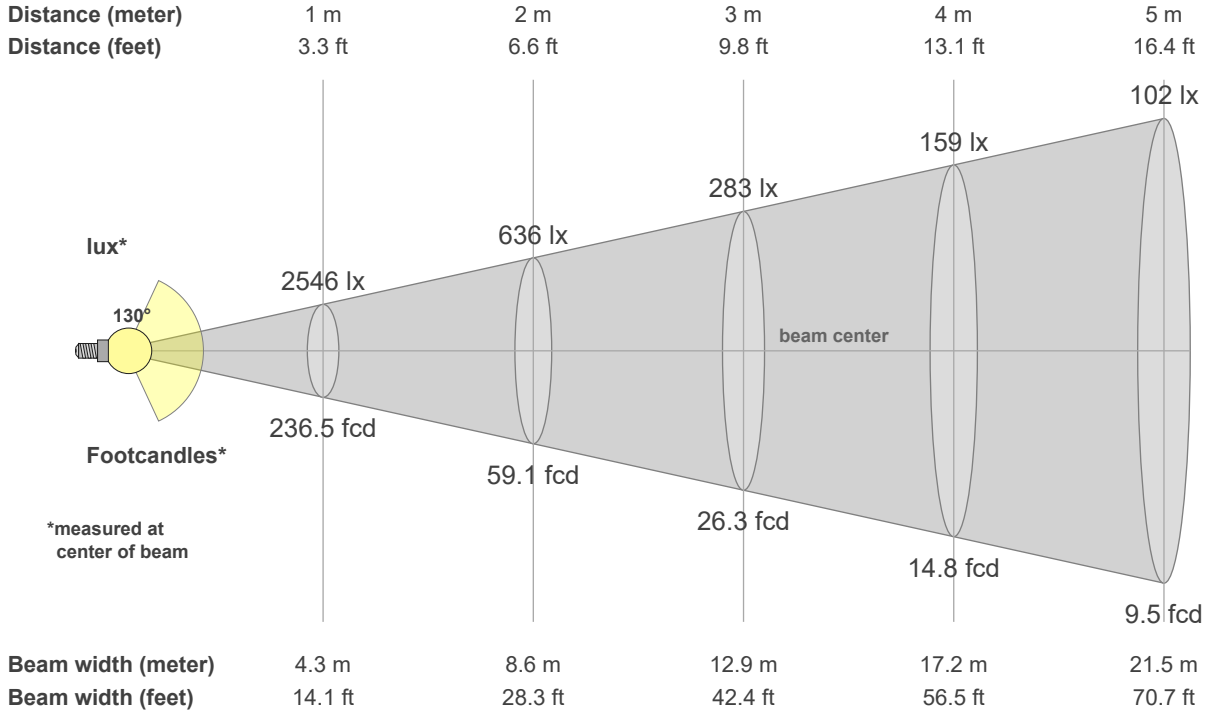
11006 lm – 1.94% / 98.06%  
166 lm/W  
3317 cd  
5000 K  
CRI 70.0

## Polar light distribution diagram



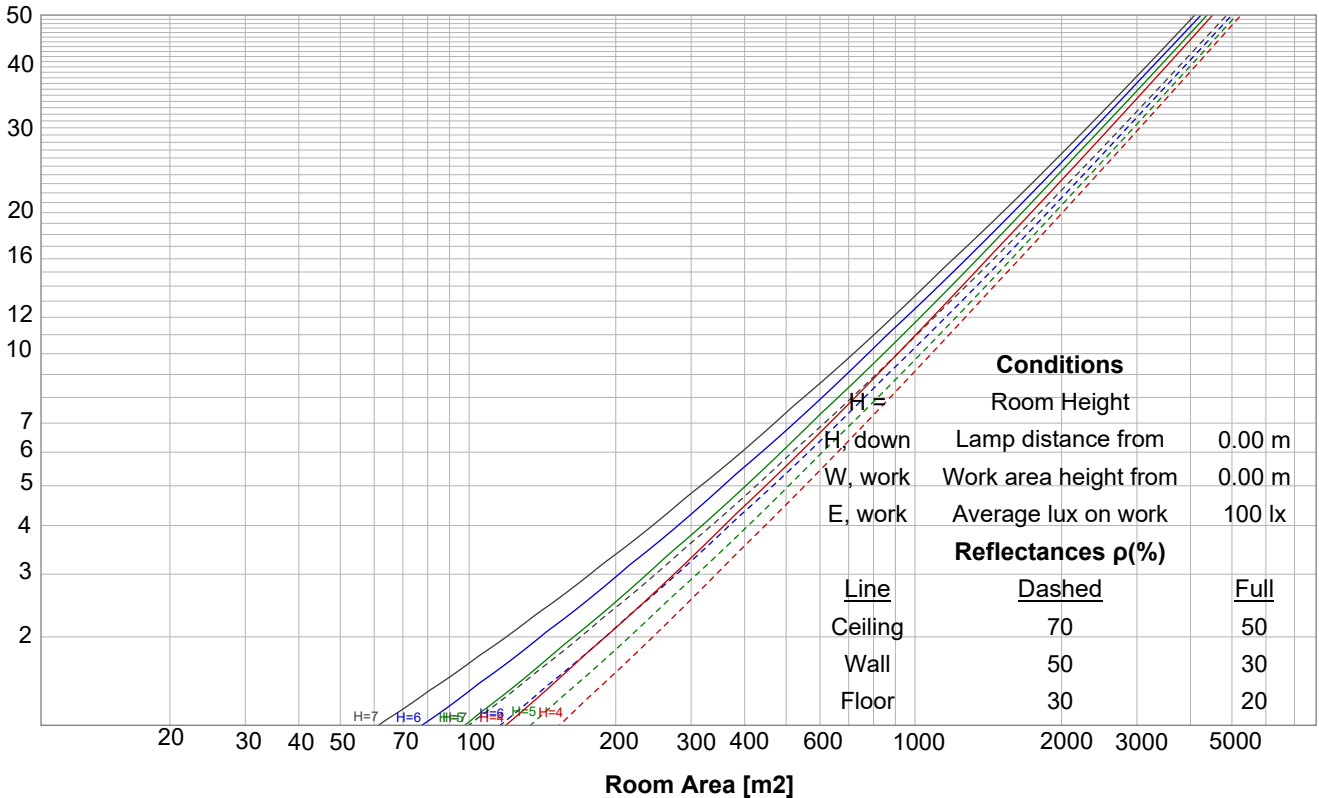
# Test report

## Beam details

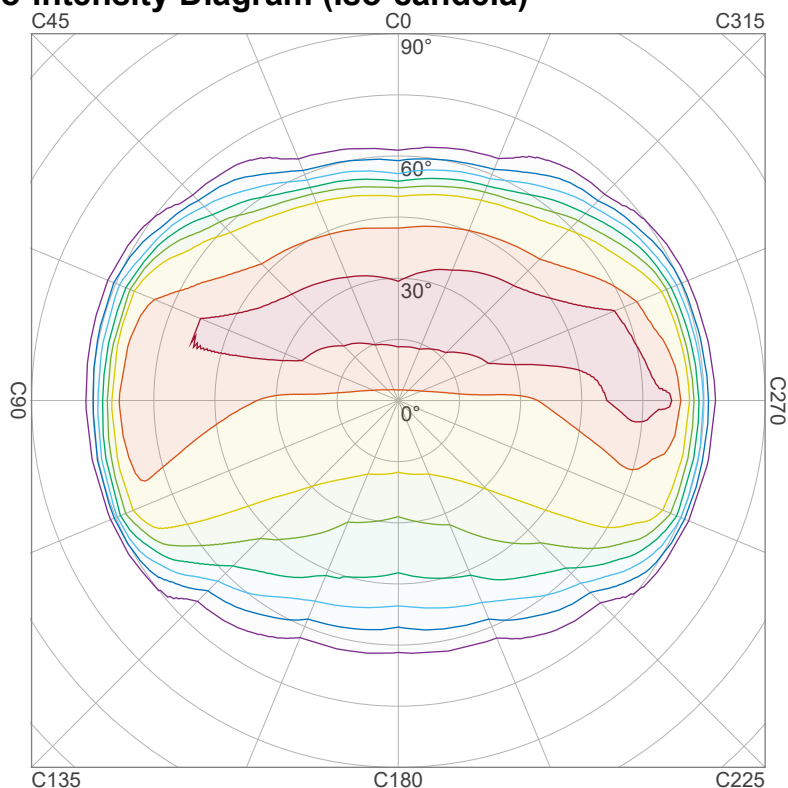


## Luminaire budgetary diagram

LAMPS (number of lamps)



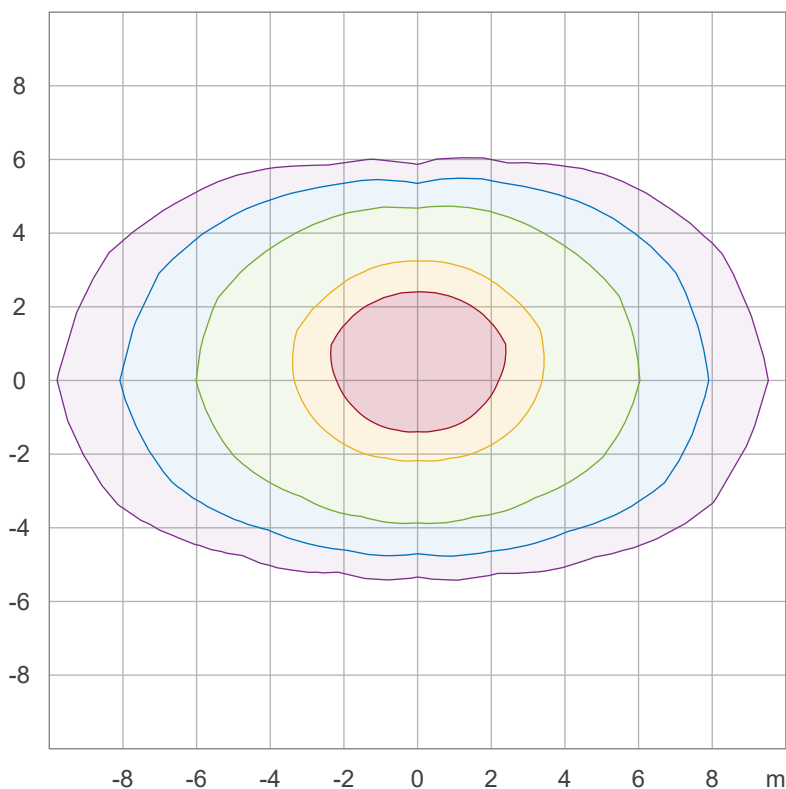
## Iso-intensity Diagram (Iso-candela)



90 %	2985.4 cd
80 %	2653.7 cd
70 %	2322.0 cd
60 %	1990.3 cd
50 %	1658.6 cd
40 %	1326.8 cd
30 %	995.1 cd
20 %	663.4 cd
10 %	331.7 cd

Peak intensity: 3317.1 cd  
 Number of c-planes: 16

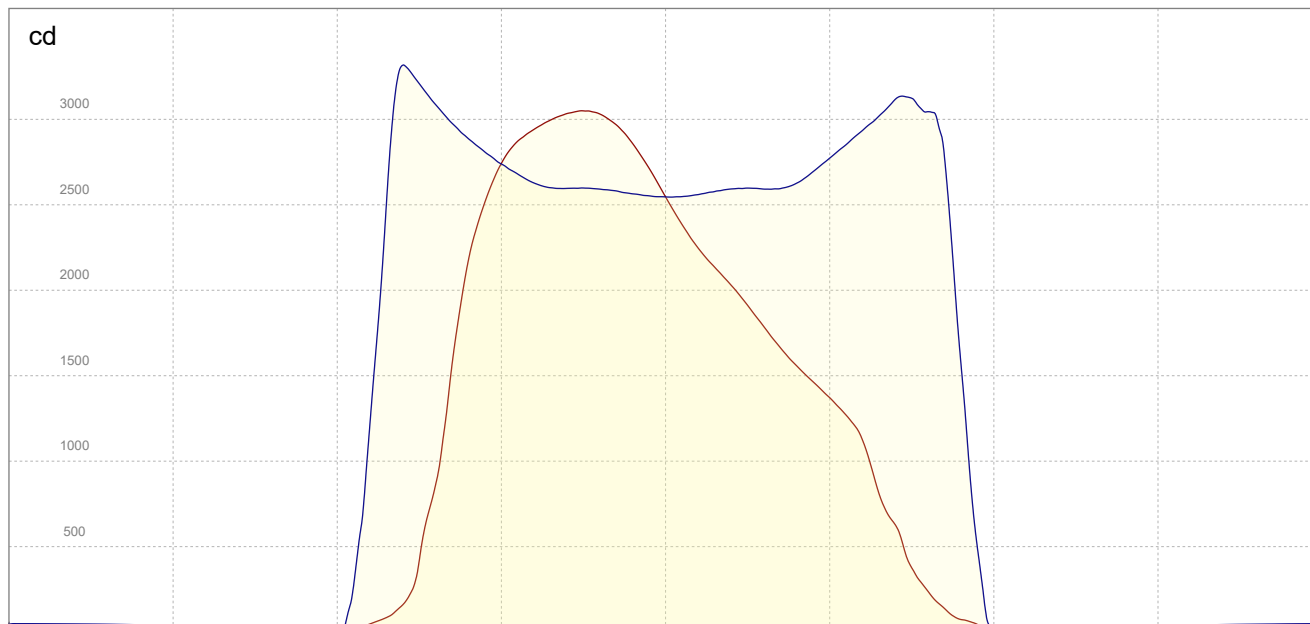
## Iso-illuminance Diagram (Iso-lux)



50.0 %	153.1 lx
30.0 %	91.9 lx
10.0 %	30.6 lx
5.0 %	15.3 lx
3.0 %	9.2 lx

Peak illuminance: 306.2 lx  
 Mounting height: 3.0 m  
 Number of c-planes: 16

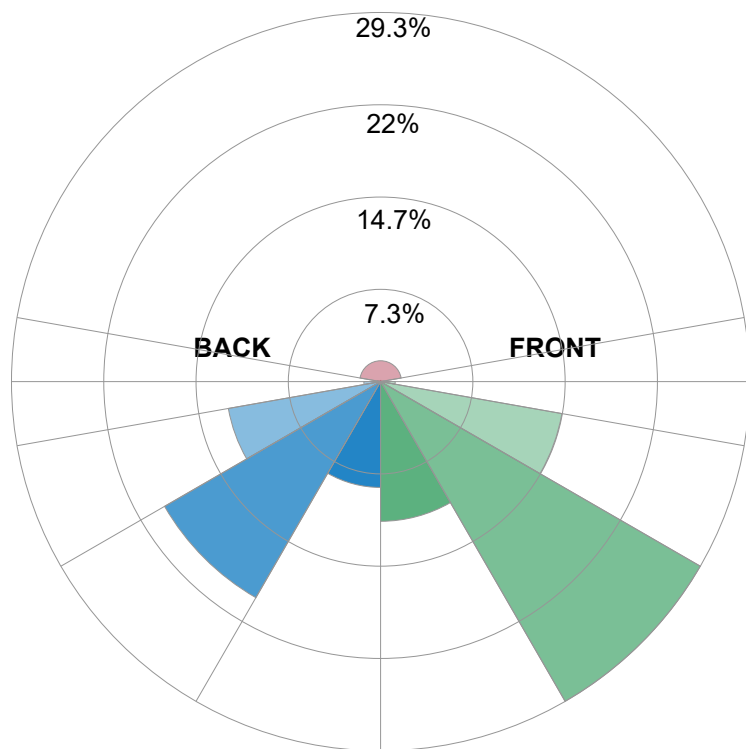
## Linear intensity distribution



— C0 - C180  
— C90 - C270

## IESNA TM-15-07 Luminaire Classification System For Outdoor Luminaires

BUG rating B3 U3 G3



### Forward Light

Low (0-30°)	1222.2 lm	11.1%
Medium (30-60°)	3229.9 lm	29.3%
High (60-80°)	1610.8 lm	14.6%
Very High	127.8 lm	1.2%

### Back Light

Low (0-30°)	926 lm	8.4%
Medium (30-60°)	2182.9 lm	19.8%
High (60-80°)	1352.6 lm	12.3%
Very High	146.5 lm	1.3%

### Uplight

Low (90-100°)	30.7 lm	0.3%
High (100-180°)	182.5 lm	1.7%

### Total

Sum	11006 lm	100%
-----	----------	------