

Test report

Laboratory and Equipment

Test lab
Spectrometer Manufacturer and Model
Measurement date

n/a - serial: n/a sensor serial: n/a
n/a, n/a – n/a
7/13/2024

Measurement Conditions

Tested c-planes
Tested gamma angles
Input Power

17 – distance {C_PLANES_DIST}°
181 – {H_PLANES_DIST}°
64.0 W

Tested Light Source

Luminaire
Basic Luminous Shape
Item No.
Manufacturer

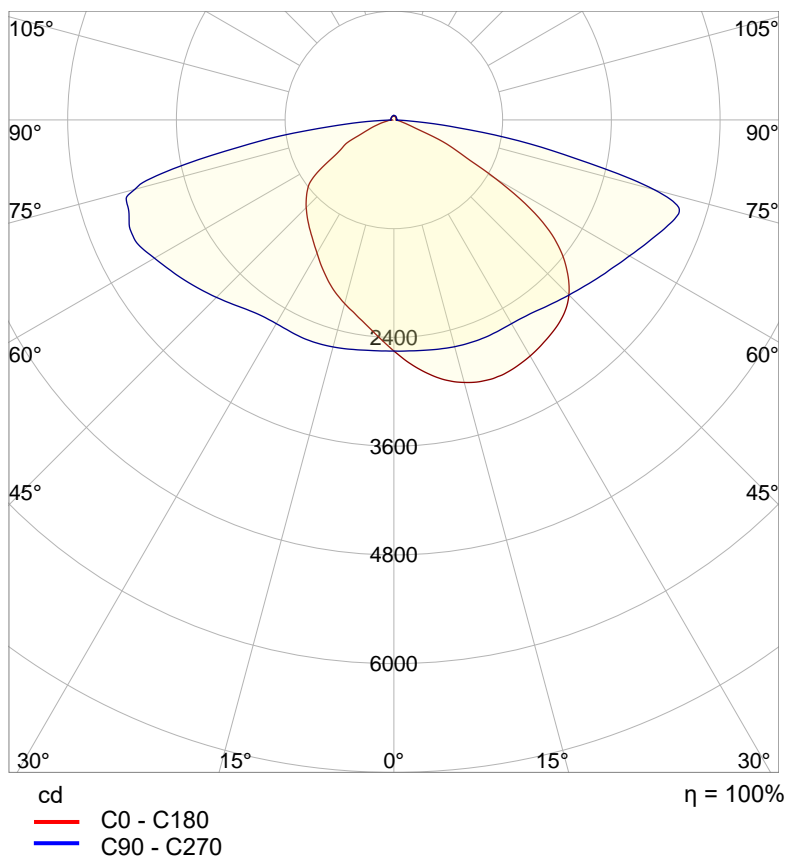
Tundra Area Light - TND-PL-SB150-01
PANEL
Grizzly Lighting Systems

Main Light Measurement Results

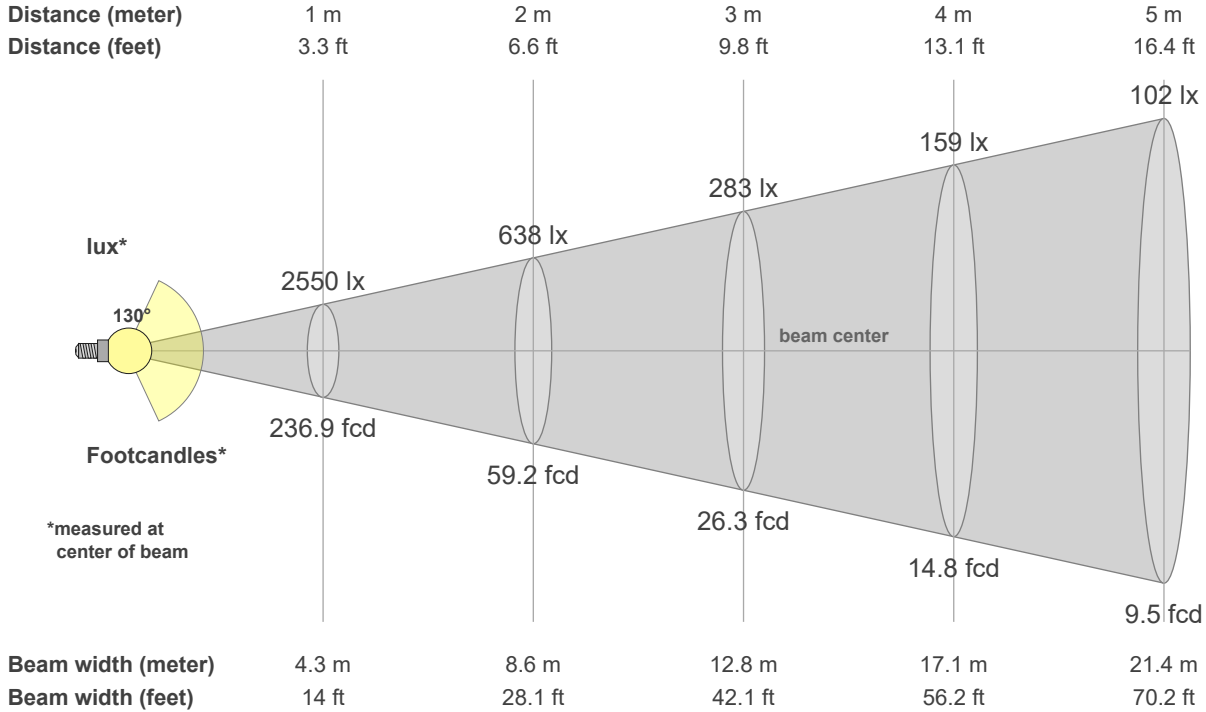
Output – Total Lumen (Up% / Down%)
Efficiency
Peak Intensity
Correlated Color Temperature, CCT
Color Rendering Index

10974 lm – 1.94% / 98.06%
172 lm/W
3309 cd
4000 K
CRI 70.0

Polar light distribution diagram

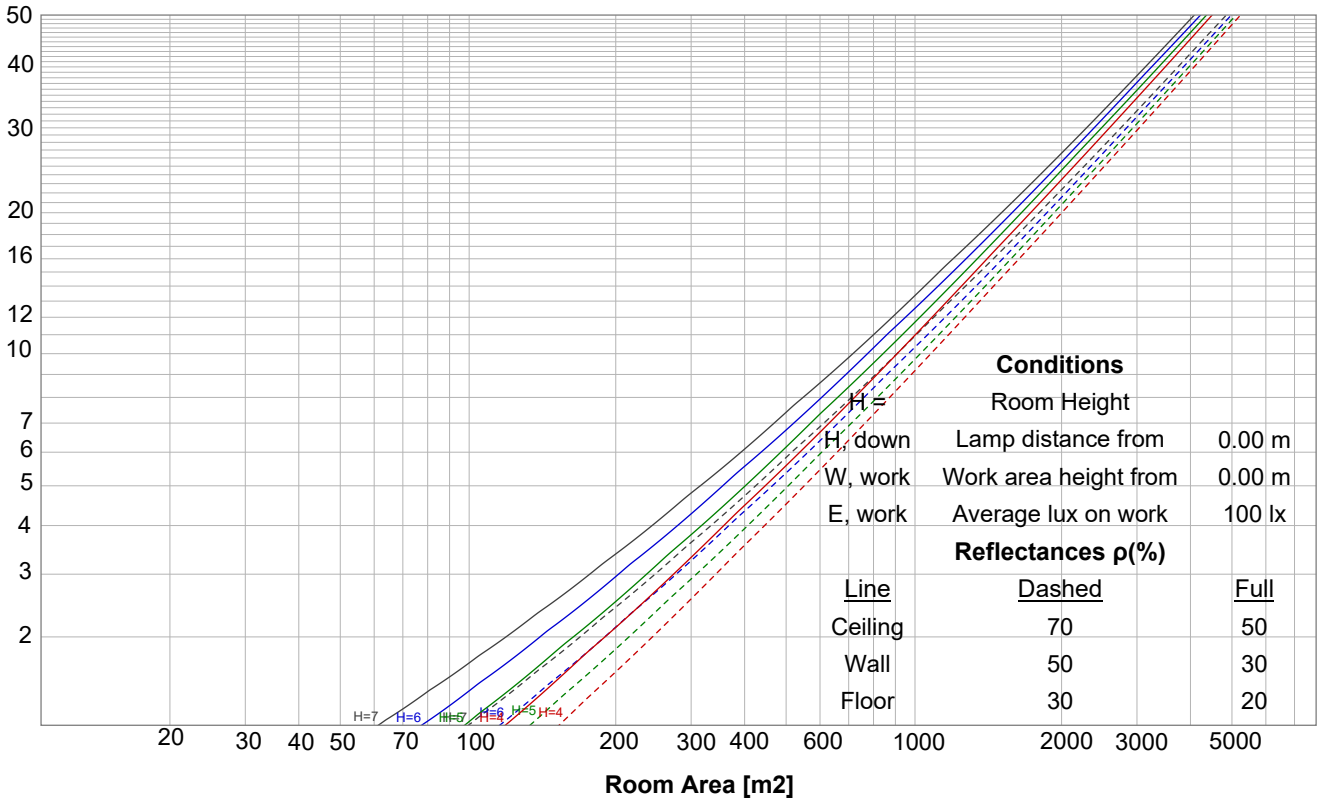


Beam details

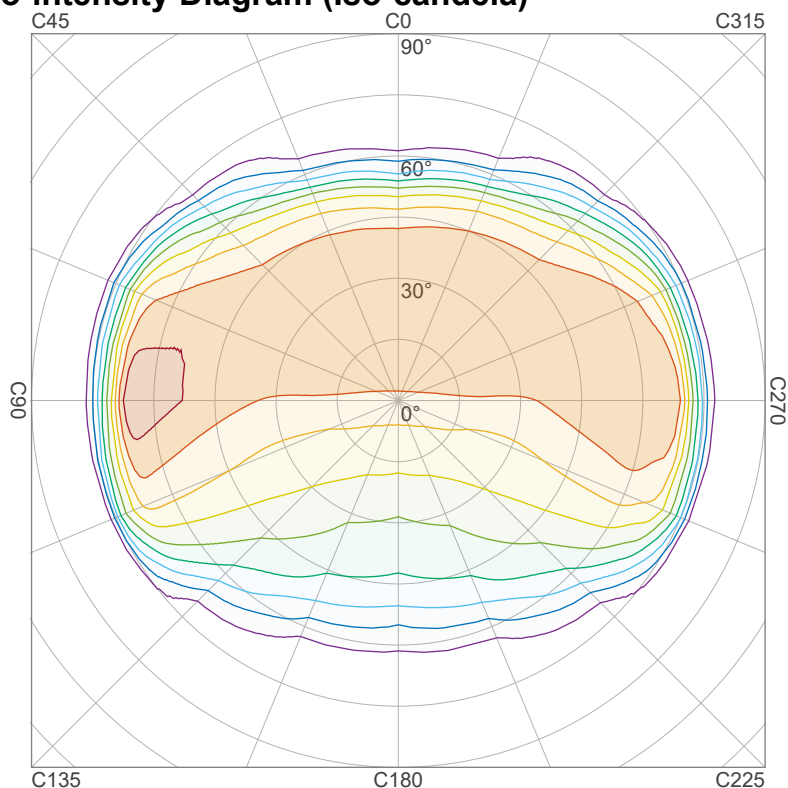


Luminaire budgetary diagram

LAMPS (number of lamps)



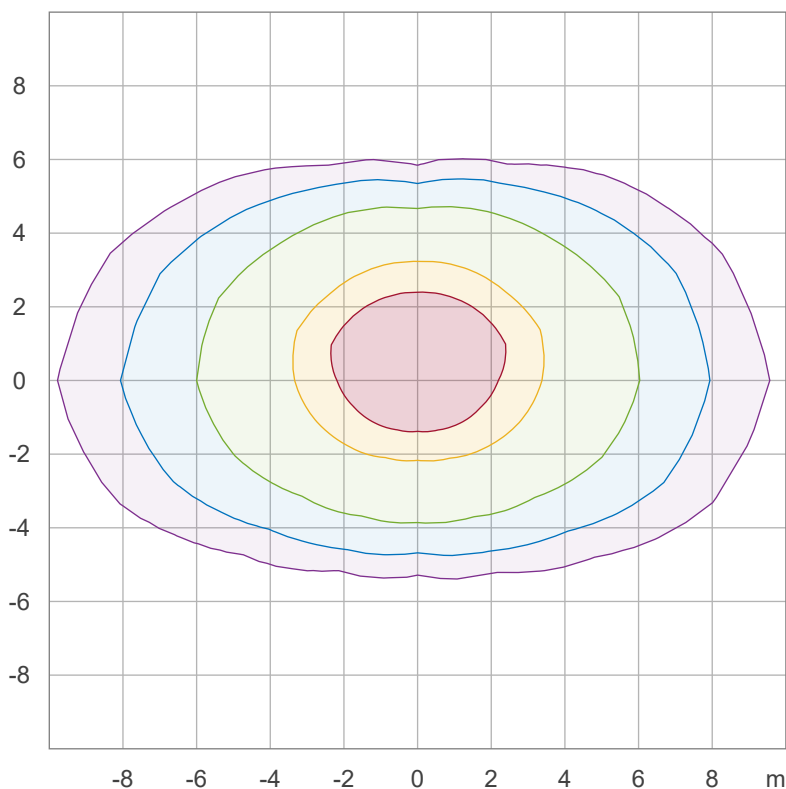
Iso-intensity Diagram (Iso-candela)



90 %	2978.0 cd
80 %	2647.1 cd
70 %	2316.2 cd
60 %	1985.3 cd
50 %	1654.5 cd
40 %	1323.6 cd
30 %	992.7 cd
20 %	661.8 cd
10 %	330.9 cd

Peak intensity: 3308.9 cd
 Number of c-planes: 16

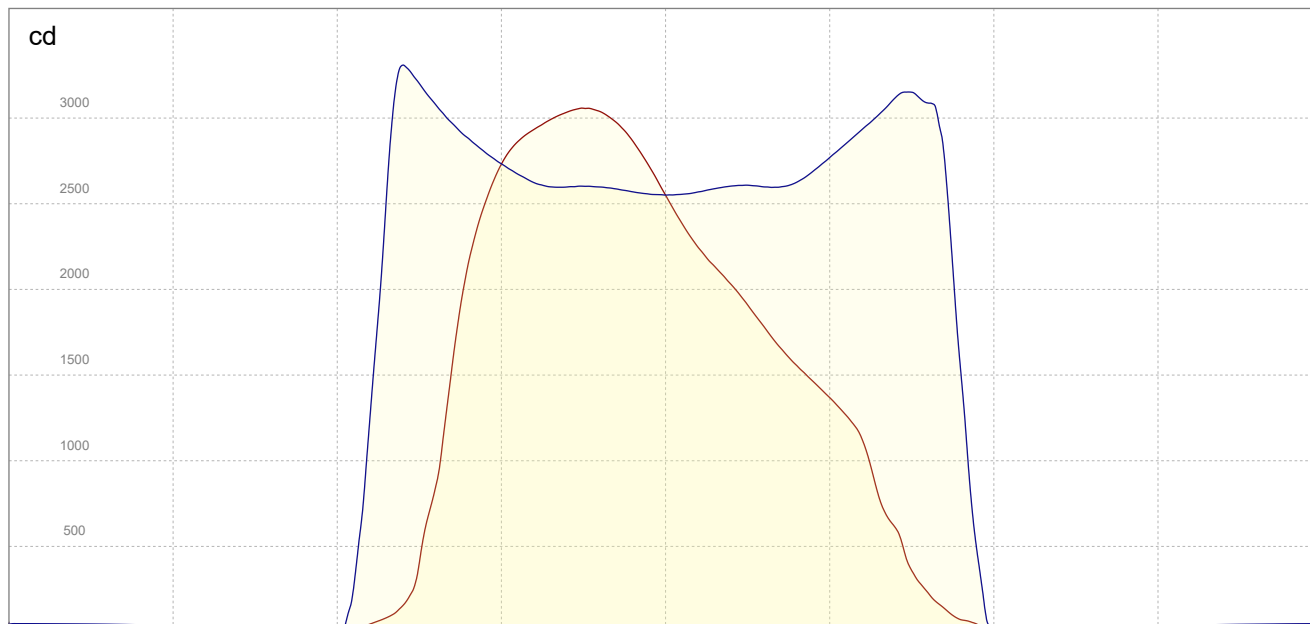
Iso-illuminance Diagram (Iso-lux)



50.0 %	153.6 lx
30.0 %	92.1 lx
10.0 %	30.7 lx
5.0 %	15.4 lx
3.0 %	9.2 lx

Peak illuminance: 307.2 lx
 Mounting height: 3.0 m
 Number of c-planes: 16

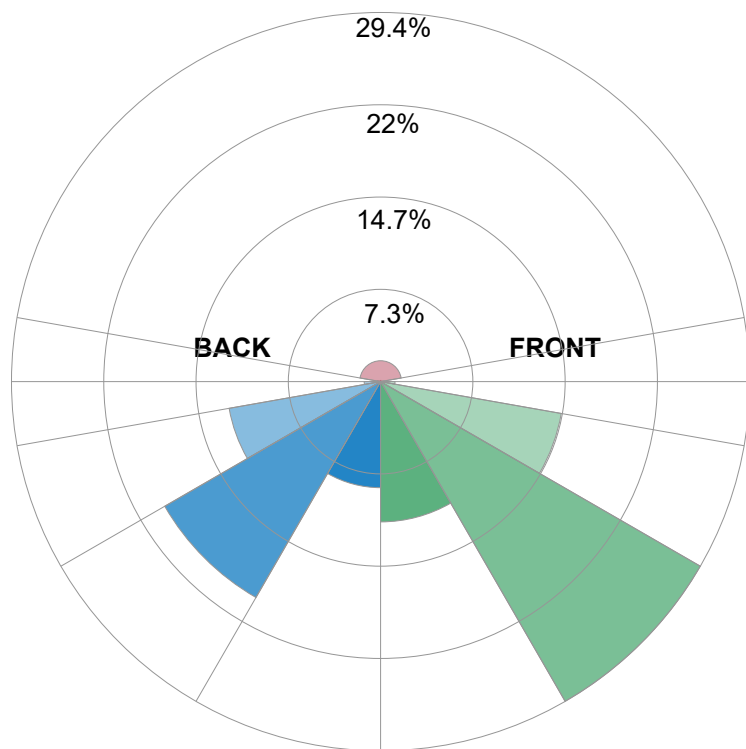
Linear intensity distribution



— C0 - C180
— C90 - C270

IESNA TM-15-07 Luminaire Classification System For Outdoor Luminaires

BUG rating B3 U3 G3



Forward Light

Low (0-30°)	1225.2 lm	11.2%
Medium (30-60°)	3223.8 lm	29.4%
High (60-80°)	1602.1 lm	14.6%
Very High	125.9 lm	1.1%

Back Light

Low (0-30°)	926.2 lm	8.4%
Medium (30-60°)	2177 lm	19.8%
High (60-80°)	1343.2 lm	12.2%
Very High	143.4 lm	1.3%

Uplight

Low (90-100°)	30.6 lm	0.3%
High (100-180°)	182.4 lm	1.7%

Total

Sum	10974 lm	100%
-----	----------	------