

## Laboratory and Equipment

Test lab  
Spectrometer Manufacturer and Model  
Measurement date

n/a - serial: n/a sensor serial: n/a  
n/a, n/a – n/a  
7/13/2024

## Measurement Conditions

Tested c-planes  
Tested gamma angles  
Input Power

17 – distance {C\_PLANES\_DIST}°  
181 – {H\_PLANES\_DIST}°  
66.2 W

## Tested Light Source

Luminaire  
Basic Luminous Shape  
Item No.  
Manufacturer

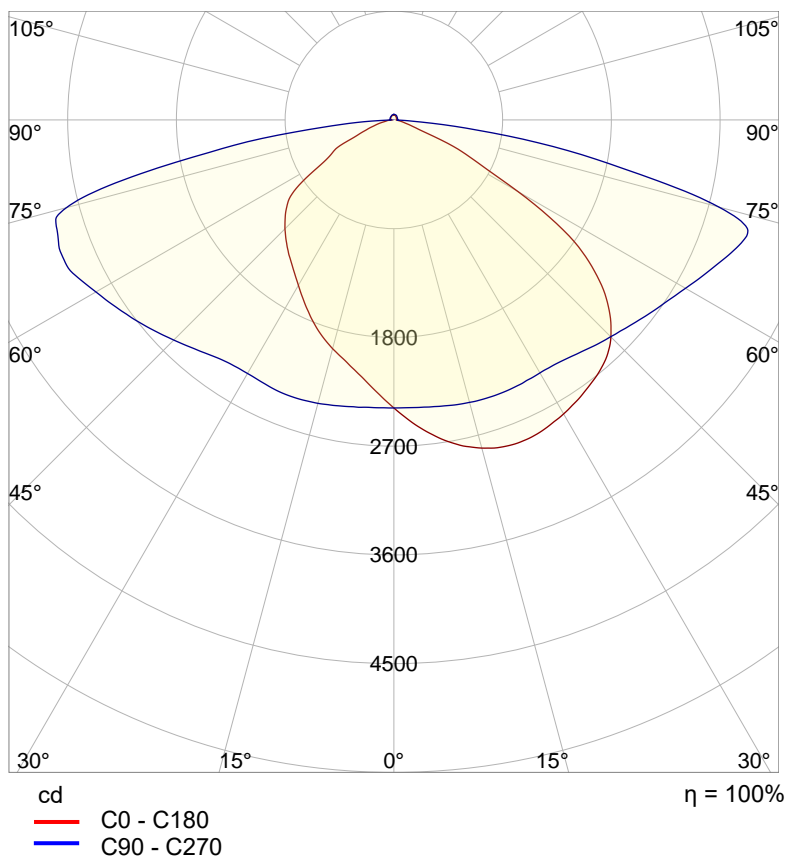
TND-PL-SB150-01 - Tundra Area Light  
PANEL  
Grizzly Lighting Systems

## Main Light Measurement Results

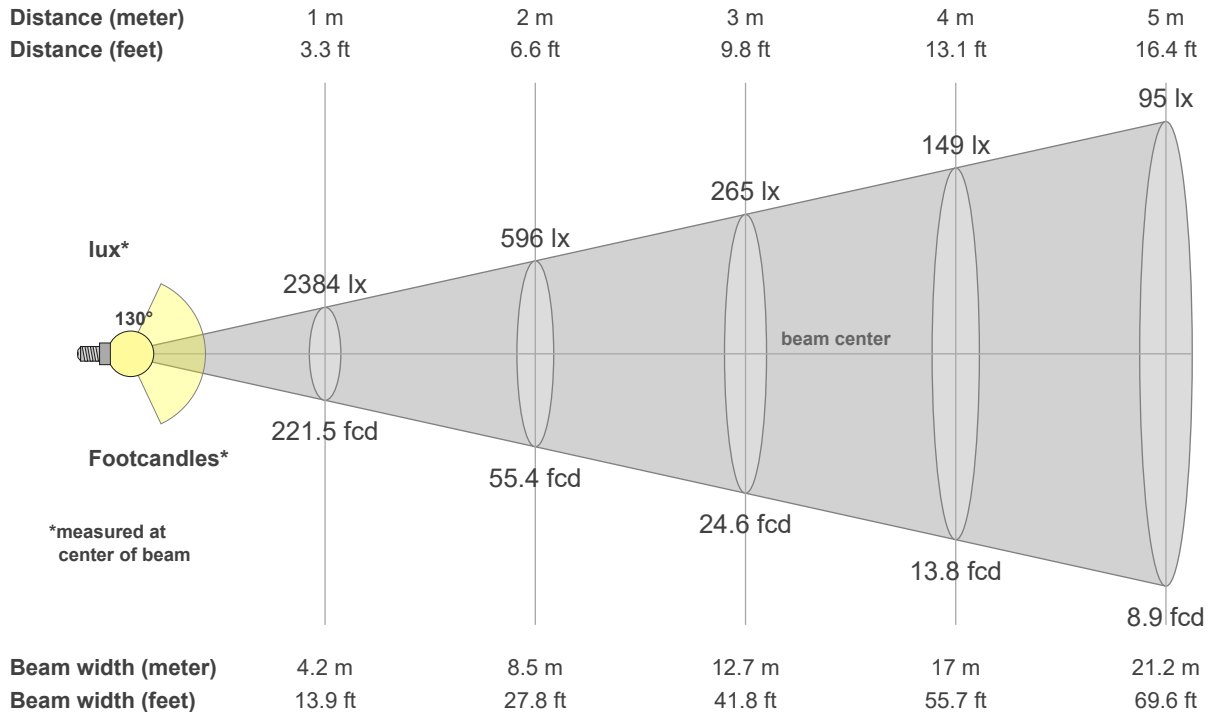
Output – Total Lumen (Up% / Down%)  
Efficiency  
Peak Intensity  
Correlated Color Temperature, CCT  
Color Rendering Index

10199 lm – 1.94% / 98.06%  
154 lm/W  
3075 cd  
3000 K  
CRI 70.0

## Polar light distribution diagram

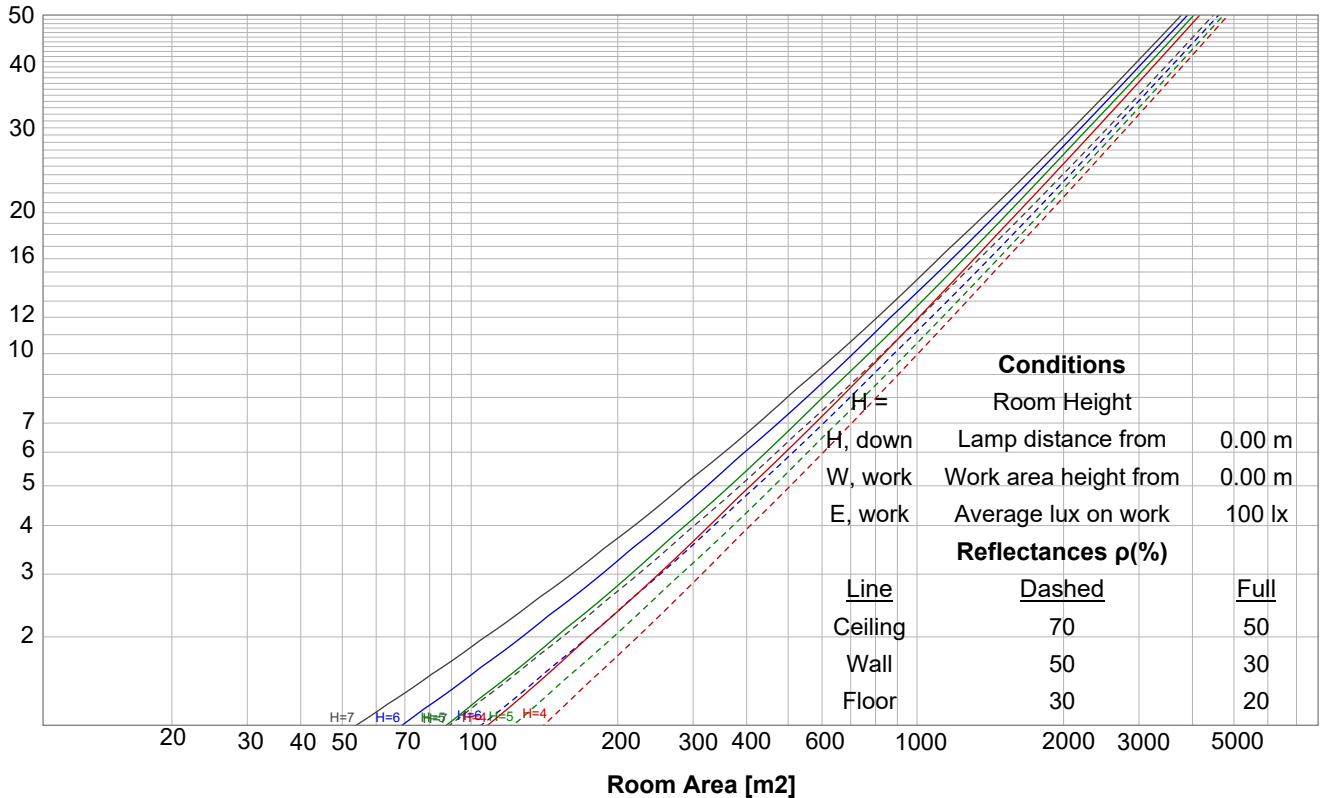


## Beam details

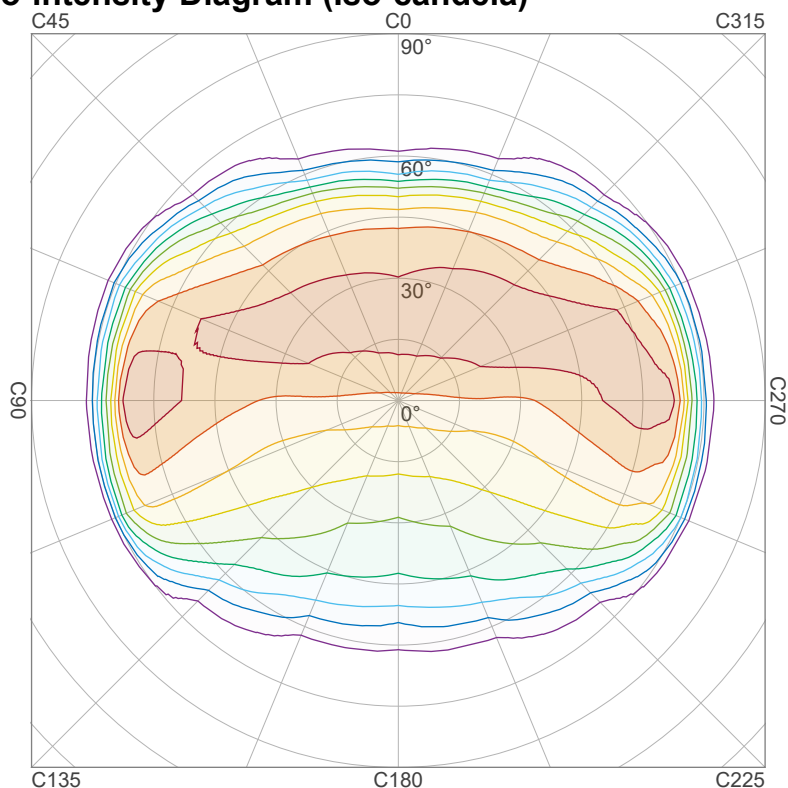


## Luminaire budgetary diagram

LAMPS (number of lamps)



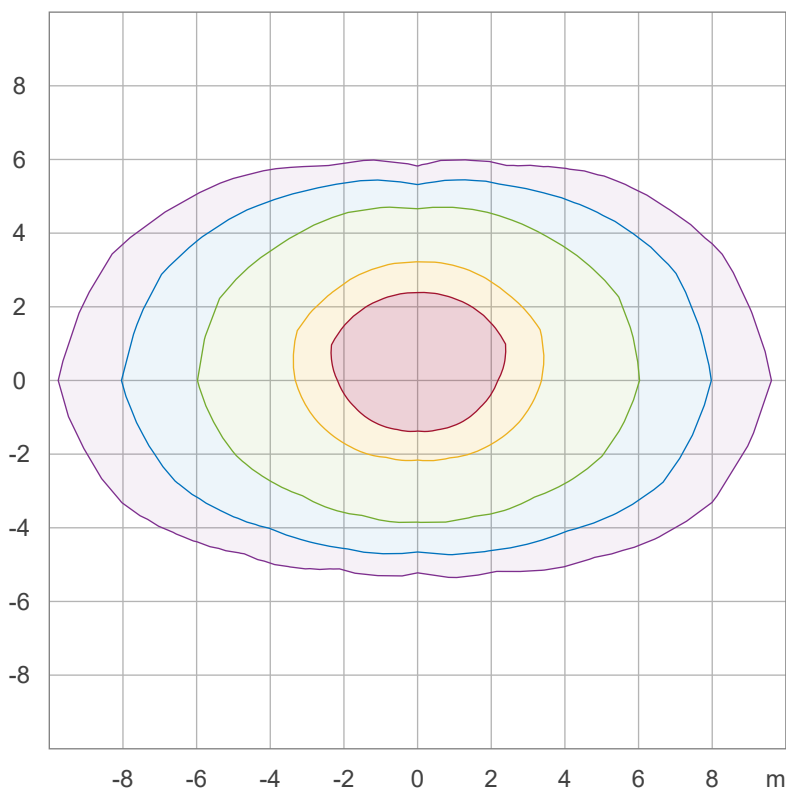
## Iso-intensity Diagram (Iso-candela)



90 %	2767.3 cd
80 %	2459.8 cd
70 %	2152.4 cd
60 %	1844.9 cd
50 %	1537.4 cd
40 %	1229.9 cd
30 %	922.4 cd
20 %	615.0 cd
10 %	307.5 cd

Peak intensity: 3074.8 cd  
 Number of c-planes: 16

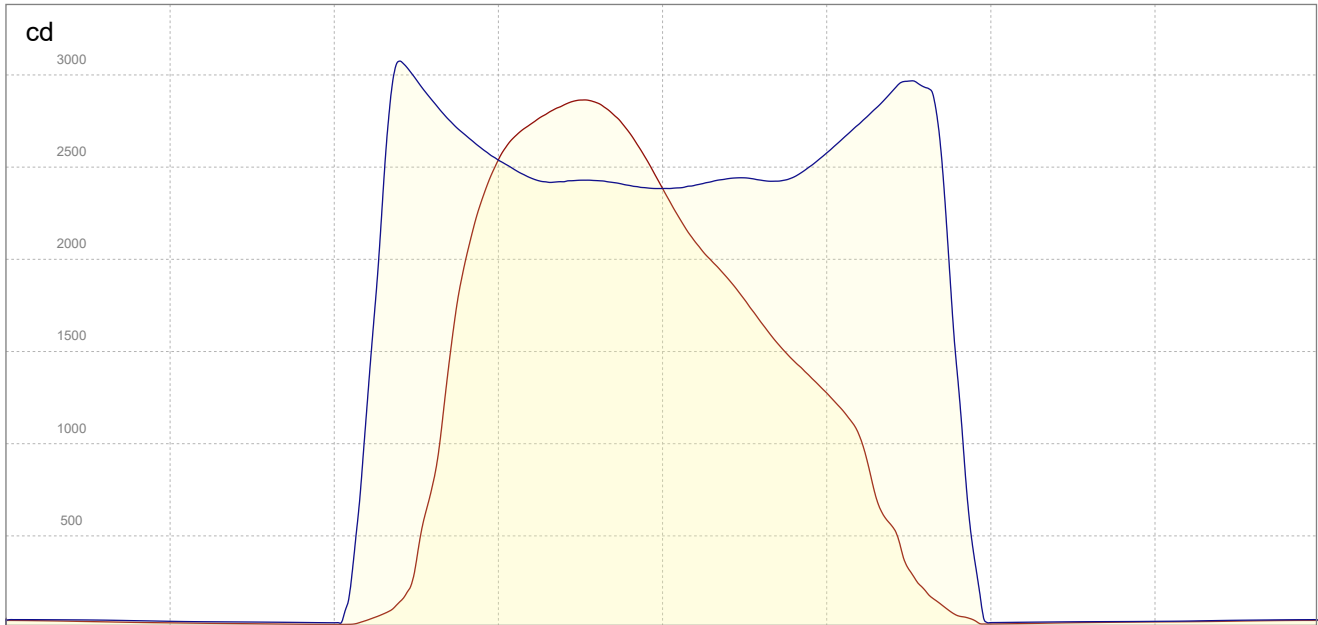
## Iso-illuminance Diagram (Iso-lux)



50.0 %	143.8 lx
30.0 %	86.3 lx
10.0 %	28.8 lx
5.0 %	14.4 lx
3.0 %	8.6 lx

Peak illuminance: 287.6 lx  
 Mounting height: 3.0 m  
 Number of c-planes: 16

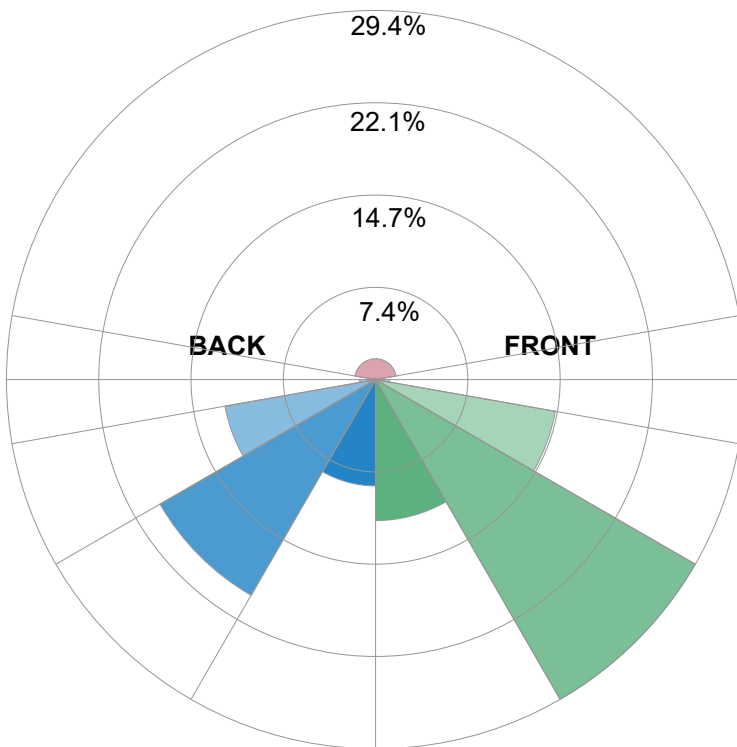
## Linear intensity distribution



— C0 - C180  
— C90 - C270

## IESNA TM-15-07 Luminaire Classification System For Outdoor Luminaires

BUG rating B3 U3 G3



### Forward Light

Low (0-30°)	1146.1 lm	11.2%
Medium (30-60°)	3001 lm	29.4%
High (60-80°)	1483.8 lm	14.5%
Very High	113.5 lm	1.1%

### Back Light

Low (0-30°)	864.1 lm	8.5%
Medium (30-60°)	2024.3 lm	19.8%
High (60-80°)	1242.9 lm	12.2%
Very High	130 lm	1.3%

### Uplight

Low (90-100°)	28.5 lm	0.3%
High (100-180°)	169.9 lm	1.7%

### Total

Sum	10199 lm	100%
-----	----------	------