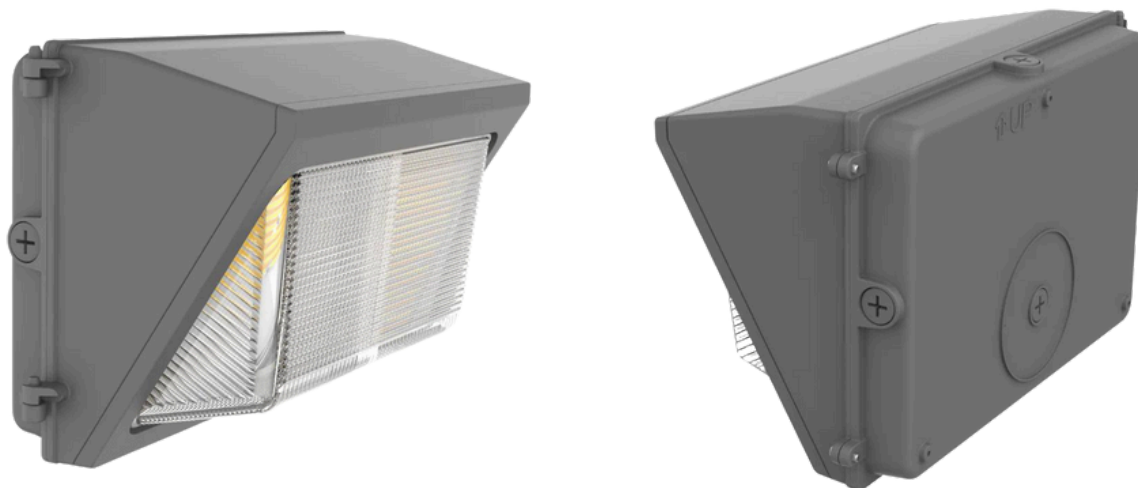


Grizzly Wall Pack

120-347v selectable Wall Pack Light



Description

An economical and high-performance wall pack, with universal voltage, wattages and color options. Save on inventory costs with 9 different color and wattage combos.

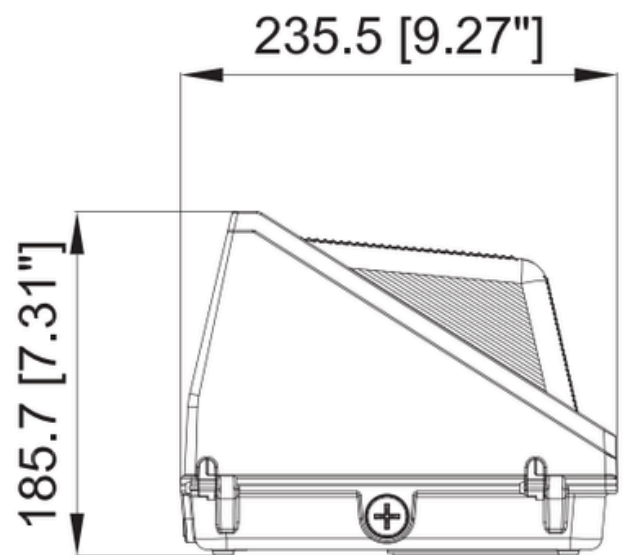
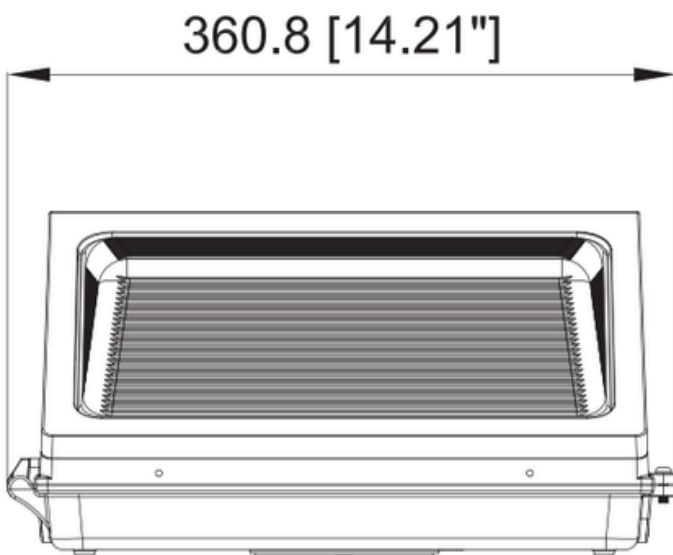
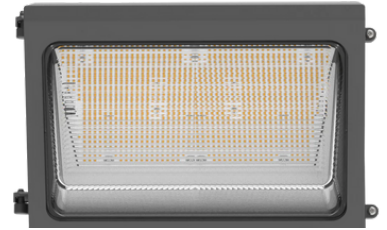
Features

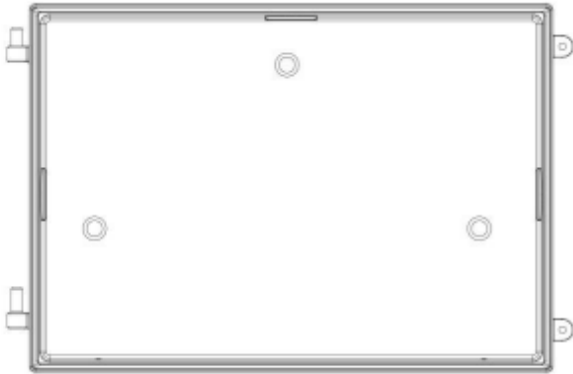
- IP65 water and dust resistant
- CCT 3/4/5 kelvin tunable
- Built in photocell
- DLC Premium approved
- Durable aluminum housing
- Tough glass cover
- Built in power supply
- Tunable wattage options

Specifications	60w	120w
Watts	40/50/60w	80/100/120w
Voltage	120-347 VAC	
Kelvin	3000/4000/5000	
Efficacy	140 LPW	
Max Lumens	8400	16800
CRI	80+	
Operating Temp	-40°C to 45°C	
Beam Angle	110°	
Mounting	Backplate	
Controls	Photocell/Tunable/Dimmable	
Approx Lifespan	50,000 hrs	
Surge Protection	6 KV	



Technical Specifications and Certifications Provided by the Manufacturer

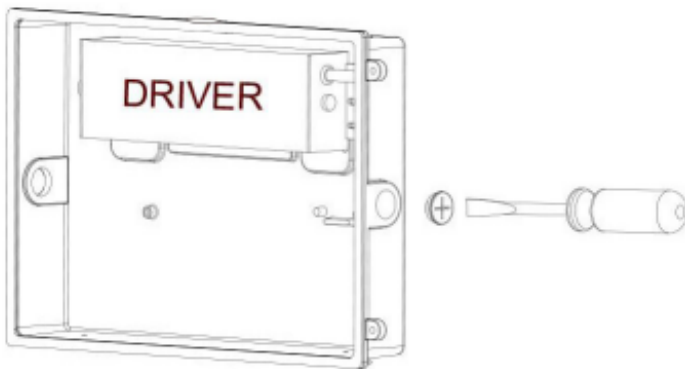




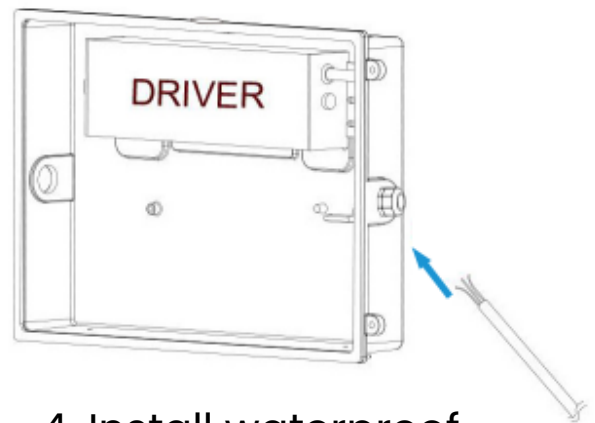
1. Remove backplate from wall pack



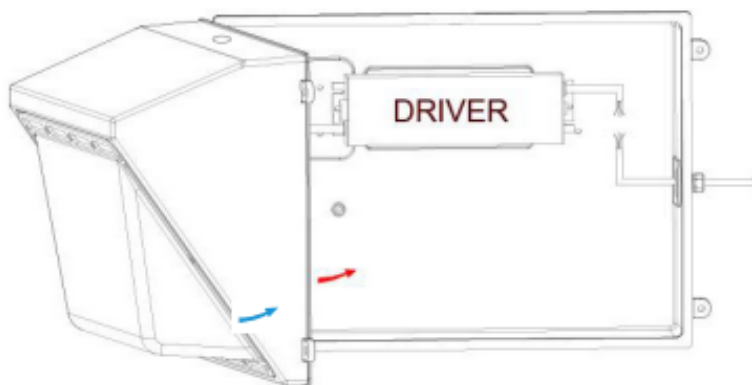
2. Attach backplate to wall



3. Unscrew wire cap



4. Install waterproof connector, then feed wire through connector



5. Place wallpack onto backplate and secure with the screws