

Linear Strip Light

Selectable Linear Strip Fixture



Description

This linear strip fixture is an economical light designed for commercial applications. Designed for simple installation and flexibility it includes multiple wattages and colors built-in. It provides a very uniform light without shadows at the edges.

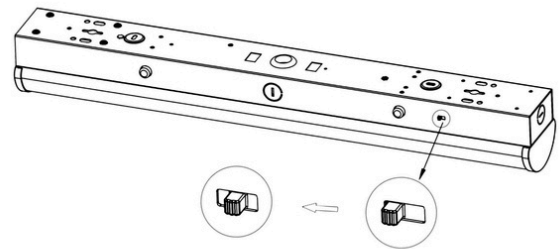
Features

- CCT 35/4/5 kelvin tunable
- Transparent caps to reduce shadows on edges
- DLC Premium Listed
- Designed for quick and easy installation
- Tool-free opening

Specifications	40w	80w
Wattage (Selectable)	24/32/40w	60/70/80w
Voltage	120-277 VAC / 120-347 VAC	
Kelvin (Selectable)	3500/4000/5000	
Efficacy	130 LPW	
Lumens	5200	10400
CRI	80+	
Length (M)	4ft/8ft	
Beam Angle	120°	
Mounting	Mounting Clips/Chain	
Controls	Dimmable/Tunable	
Approx Lifespan	L70 100,000 hrs	
Surge Protection	(4ft - 4kv) (8ft - 2kv)	

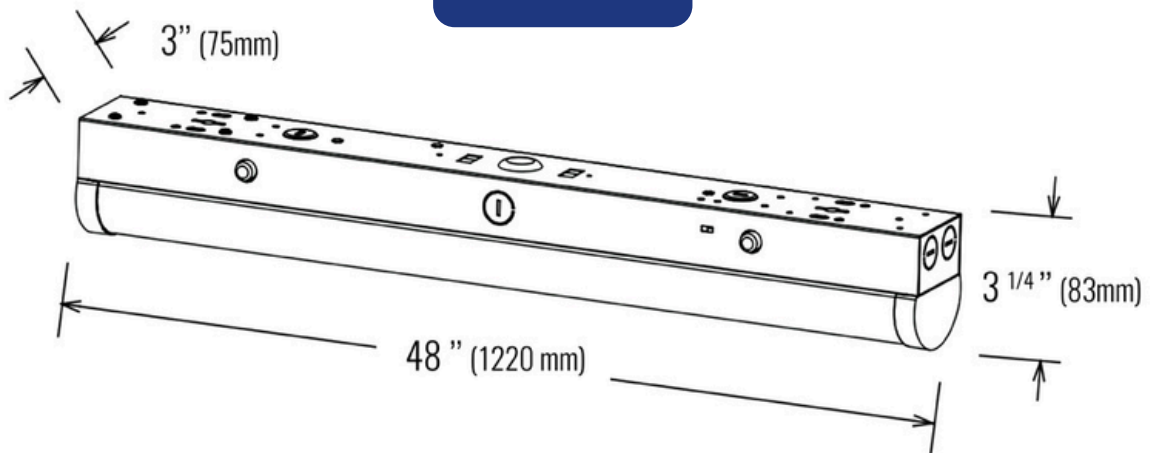


Technical Specifications and Certifications Provided by the Manufacturer



3500K / 4000K / 5000K

4ft - 40w

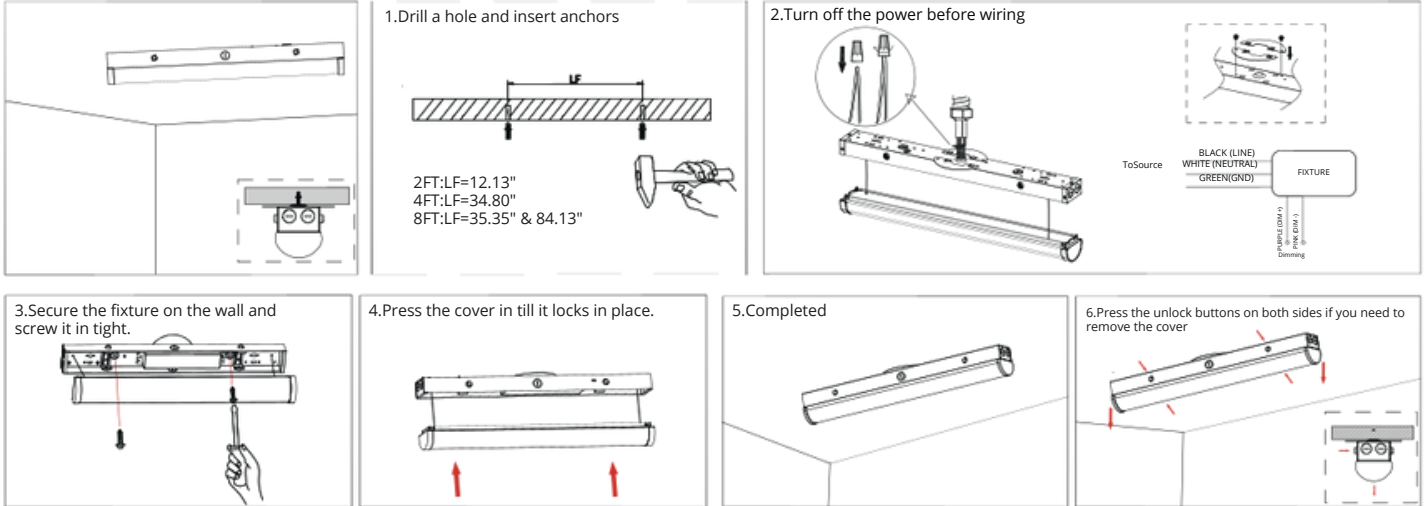


8ft - 80w

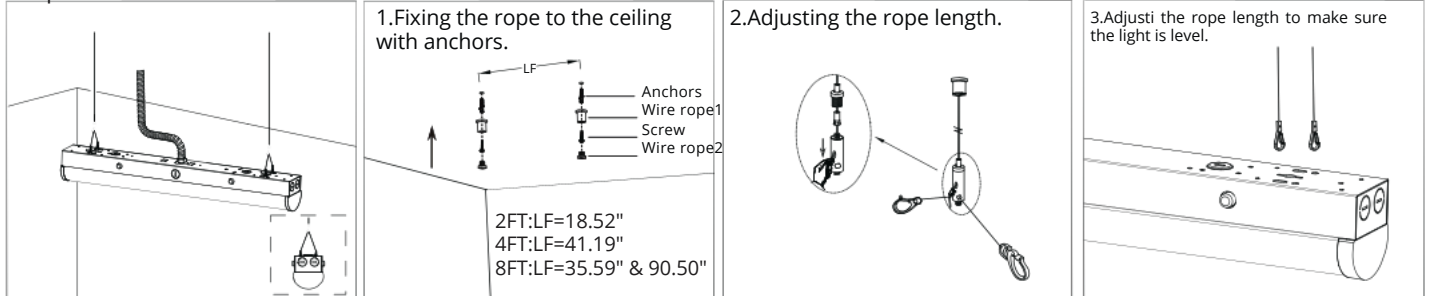


Installation

Surface-mount



Suspension



4. Turn off the power before wiring.

