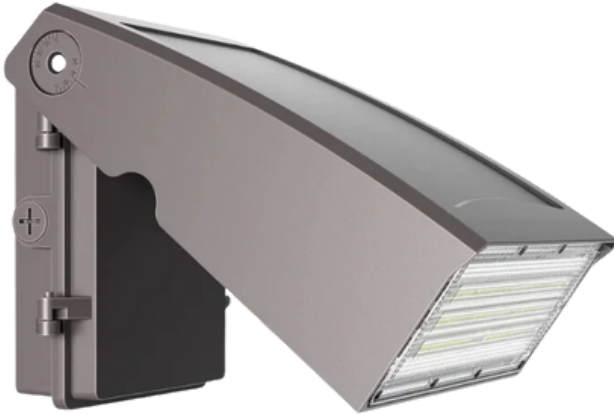


Adjustable Wall Pack

Full Cutoff Adjustable Wall Pack



Description

The adjustable full cutoff wall pack gives the light needed while cutting unwanted light pollution. Available with selectable wattage and color and adjustable beam angle for better control.

Features

- IP65 water and dust resistant
- CCT 3/4/5 kelvin tunable
- Built in photocell
- DLC Premium approved
- Durable aluminum housing
- Adjustable light angle
- Tunable wattage options

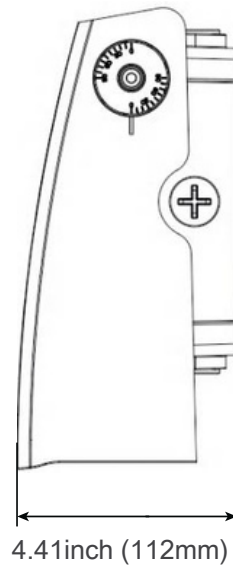
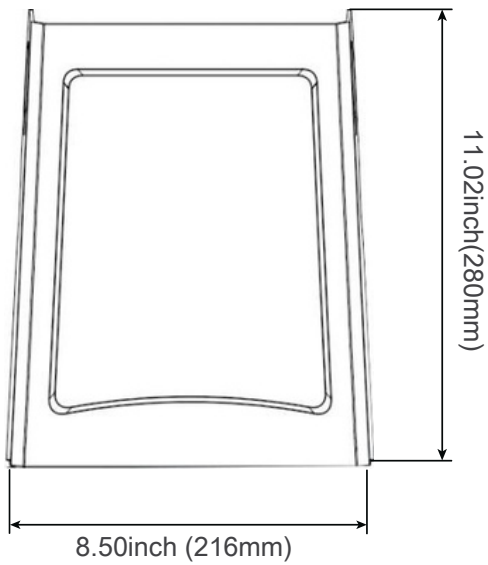
Specifications	20w	80w
Watts	20w	20/40/60/80w
Voltage	120-347 VAC	
Kelvin	3000/4000/5000	
Efficacy	130 LPW	
Max Lumens	2600	10400
CRI	70+	
Operating Temp	-30°C to 45°C	
Beam Angle	0-90° (Type II)	
Mounting	Backplate	
Controls	Photocell/Tunable/Dimmable	
Approx Lifespan	L70 50,000 hrs	
Surge Protection	4 KV	



Technical Specifications and Certifications Provided by the Manufacturer



20 watt



80 watt

