

Grizzly Retrofit Kit

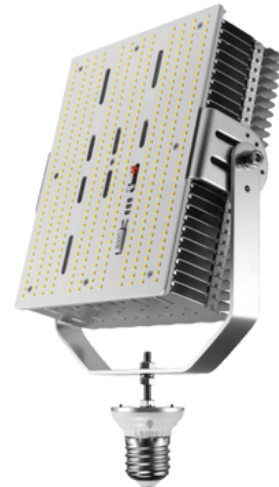
Retrofit LED Light & Driver



100w/120w/150w



200w/240w



300w

Specifications	100w	120w	150w	200w	240w	300w
Watts	100w	120w	150w	200w	240w	300w
Voltage	100-277 VAC / 277-480 VAC					
Kelvin	3000/4000/5000/5700					
Efficacy	140 LPW					
Lumens	14000 LM	16800 LM	21000 LM	28000 LM	33600 LM	42000 LM
CRI	70+					
Operating Temp	-40°C to 50°C					
Beam Distribution	120°					
Mounting	Mogul Base					+ Yoke Mounting Bracket
Controls	Overheat Protection Sensor					
Lifespan	50,000 hrs					
Surge Protection	6KV					
PC Lens Optional	Yes					No



Technical Specifications and Certifications Provided by the Manufacturer

Description

Easily replace old bulbs with this drop in, efficient LED retrofit that comes with an external Meanwell driver!



Features

- IP42 water and dust resistance
- Large aluminium heatsink
- SMD 3030/2835 140 LPW LEDs
- Active cooling with built-in fan
- Optional Polycarbonate Lenses
- Length adjustable and rotatable yoke



100w/120w/150w



200w/240w



300w

With Lens

100w/120w/150w
100-277VAC / 277-480VAC

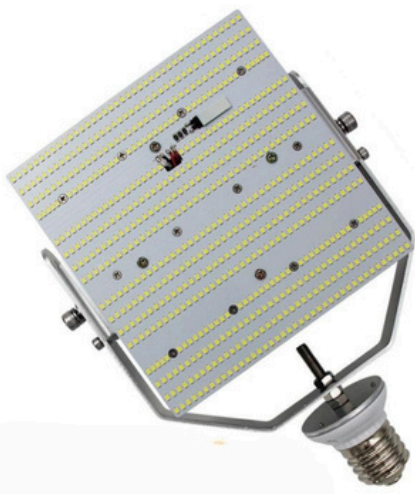


200w/240w
100-277VAC / 277-480VAC



Without Lens

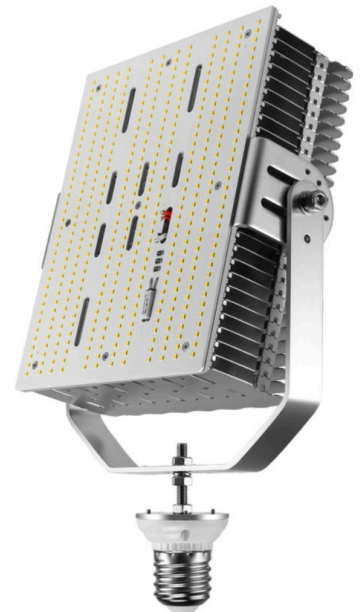
100w/120w/150w
100-277VAC / 277-480VAC

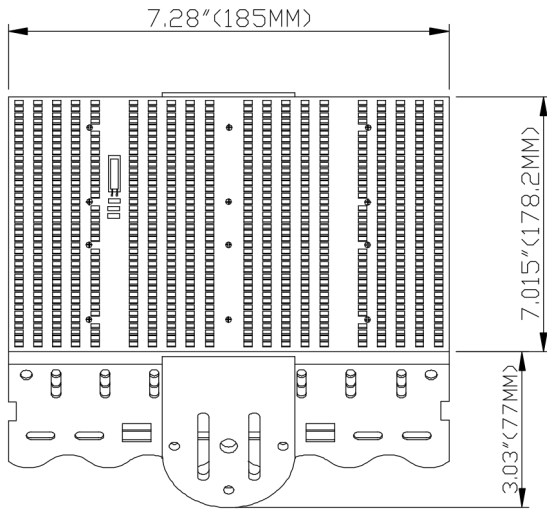


200w/240w
100-277VAC / 277-480VAC

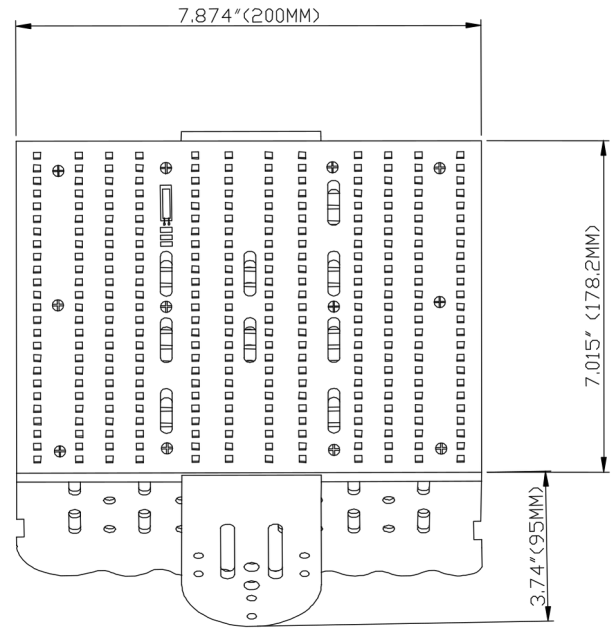


300w
100-277VAC / 277-480VAC

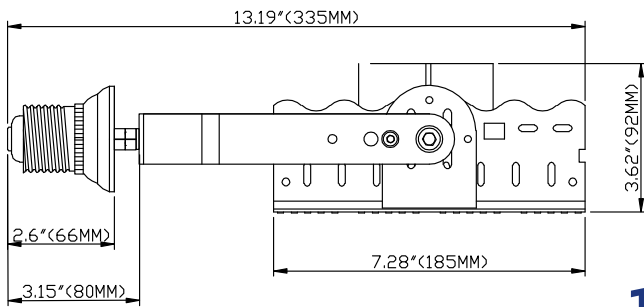




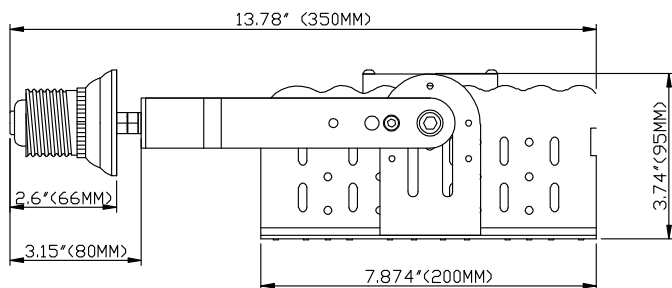
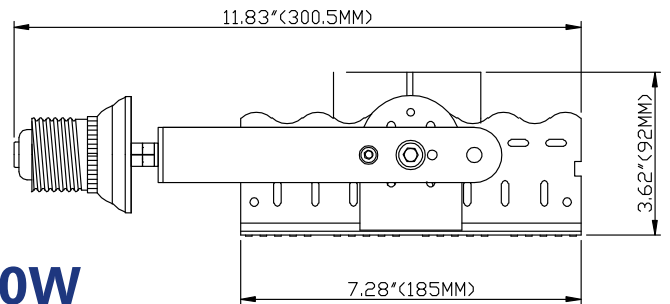
100~150W



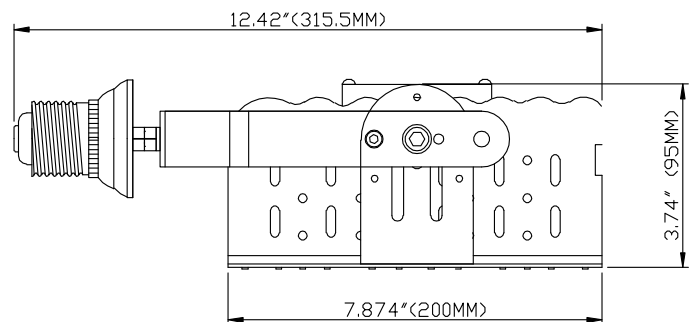
200~240W

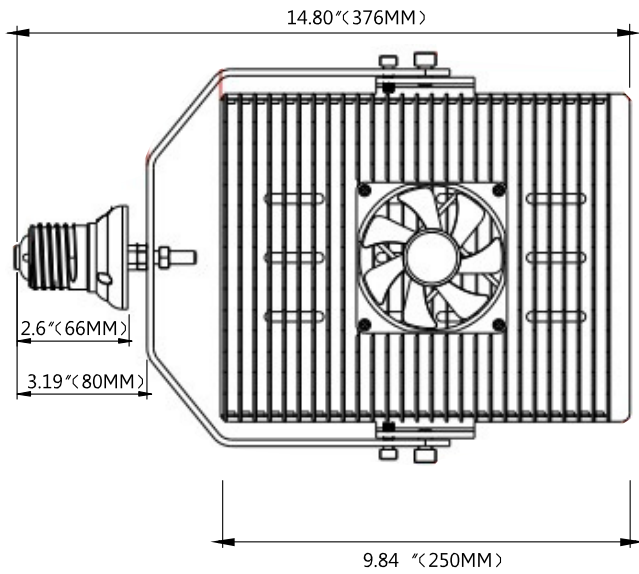


100~150W

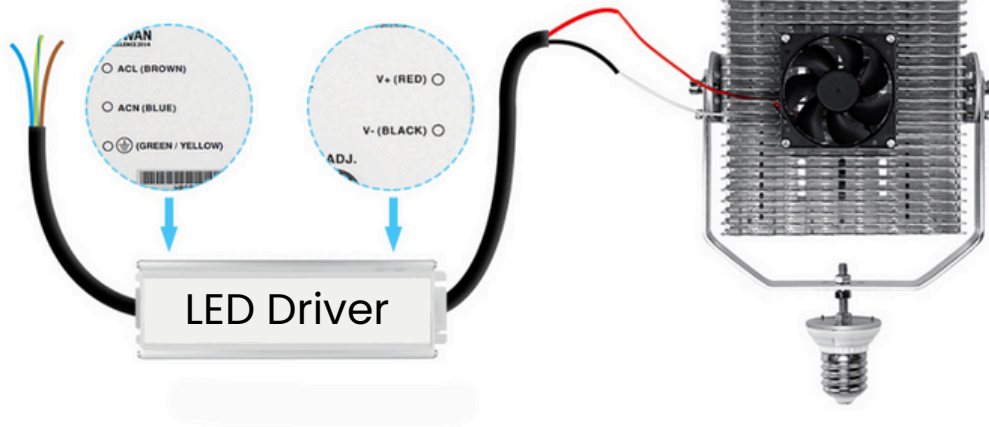
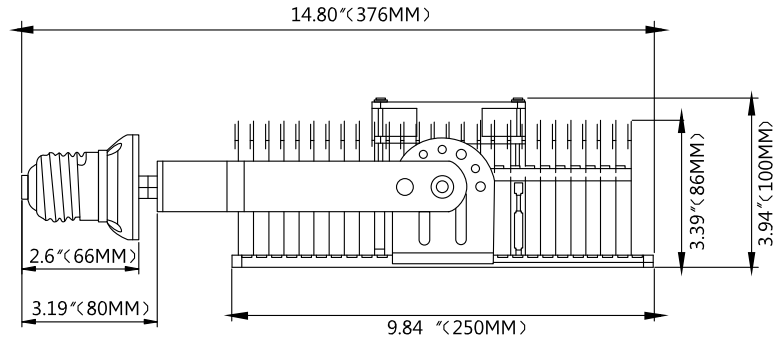


200~240W





300W



*Remove ballast, capacitors and ignitor